

UNION OF SOUTH AFRICA

London Recess Pictorial Issues

SG 33 Plate 1. 4d. Grey-Blue

1 April 1926

Bradbury, Wilkinson & Co., Ltd used one plate to print two panes of 120 each, one in English and the other in Afrikaans. There was no reason to alternate languages because the intent was always to distribute the stamps singly made up in packets of sixty each containing five buff-colored envelopes, 75 x 85 mm, holding twelve English or Afrikaans 'small margin' stamps. Postal clerks disliked the onerous task of opening the packets, counting out the individual stamps and cutting the large margin stamps from sheets, and so the 4d. triangular stamps were replaced with the 4d. Native Kraal rectangular issue on 23 March 1928, also from Bradbury, Wilkinson. To meet the needs of philatelists uncut sheets with large margins were reportedly obtainable at most post offices from 16 April 1926 onward. Some were later perforated or rouletted privately.



Johannesburg 12 APR 26 cds.
Possible first day of use.



Registered letter accepted at Nylstroom to USA.

Franked with two cut pairs from 4d. large margin sheets tied by
Several Nylstroom, Transvaal Province 15 September 1926 cds'.

New York 14 October 1926 and same date Plainfield, New Jersey registered
receipt marks. Transit by ship via U.K. was a month.



UNION OF SOUTH AFRICA

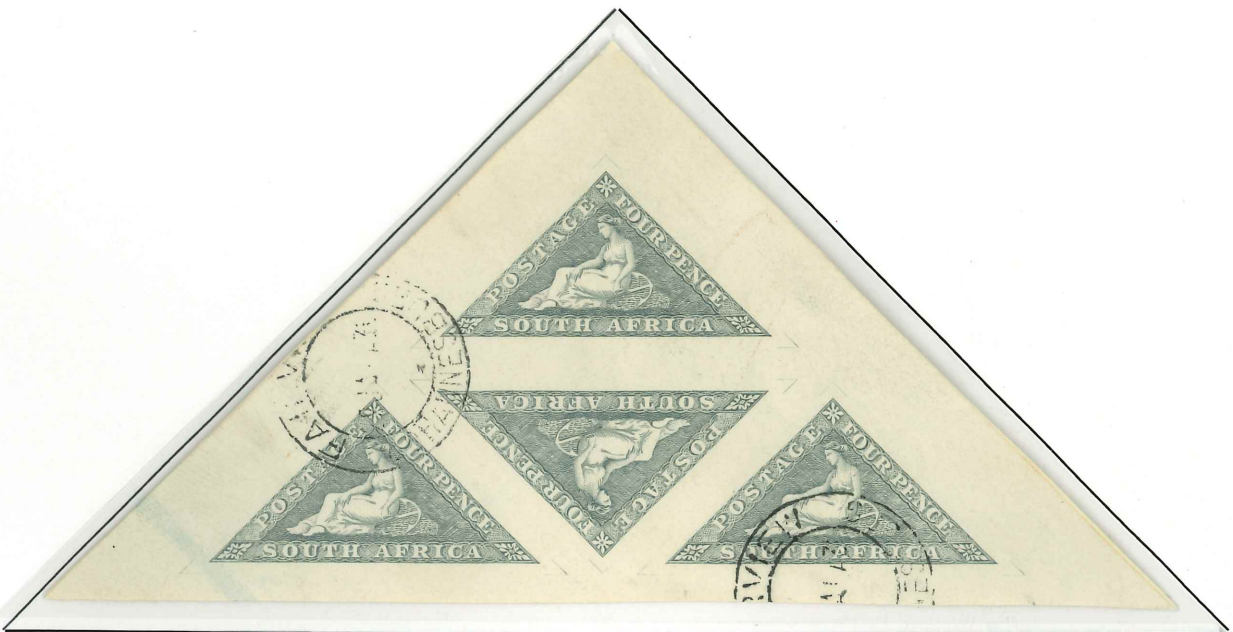
London Recess Pictorial Issues

SG 33. The Triangular Issues of 1926

Large margin sheet stamps



Fairview, Johannesburg 4 January 1926 cds



Fairview, Johannesburg 29 January 1926 cds

UNION OF SOUTH AFRICA

London Recess Pictorial Issues

SG 33. The Triangular Issues of 1926

Shades

From English & Afrikaans sheets with the plate characteristic: tiny Guide Mark in the margin above "OS" of "POSTAGE"



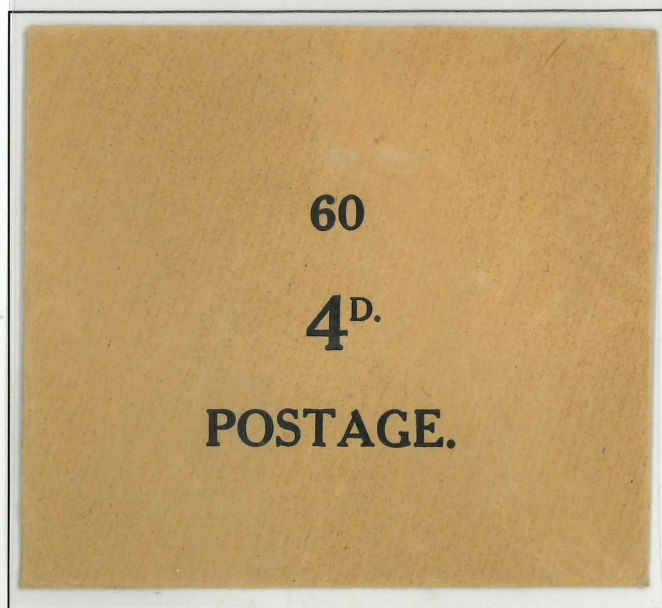
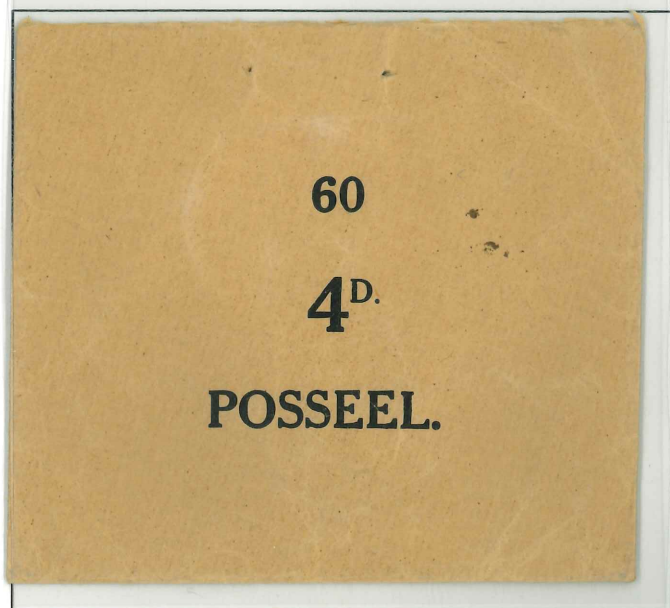
UNION OF SOUTH AFRICA

London Recess Pictorial Issues

SG 33. The Triangular Issues of 1926

"We understand that the second printing of the triangular consisted of three million stamps, and that most of the sheets were cut up for packets, comparatively small supplies of the sheets being placed on sale in London and sent to this country. A large number of shades are to be found in the new 4d. stamp, while the thickness of the paper varied considerably. It is still impossible to say definitely whether rouletted or perforated sheets are to be issued, as no instructions have yet been given to the printers to prepare any thus. We can also say on official authority that no instructions have been given by the Government to change the colour of the stamps."³

Pair of small (75 x 83 mm.) buff envelopes in which the stamps (in three glassines of 20 each) were supplied to the post office by the printer's, Messrs. Bradbury Wilkinson with attractive round or oval wax seals on the reverse. Each envelope contained 60 Afrikaans- or English-inscribed 4d. stamps with narrow margins. Few such envelopes have survived.



Glassine envelope from the buff
Afrikaans envelope containing 60 stamps



Tiny black guide dot over "OS" of "POSTAGE"



White blob below left limb of 1st "N" of "PENNIES"



Bradbury Wilkinson Seal

³ Excerpt taken from an article appearing in the South African Philatelist, 26 April 1926, referring to the 4d triangular stamps.

UNION OF SOUTH AFRICA

London Recess Pictorial Issues

The Triangular Issue of 1926

SG 33 Plate 1. 4d. Grey-Blue

Shades to greenish-slate. Imperforate. Inscribed in English or Afrikaans
Watermark Springbok (upright and inverted). The watermark is upright when the horns point towards "POSTAGE" or "POSSEEL" The stamps are known privately perforated and rouletted

Wide marginal stamps from sheets issued April 16, 1926



V1-Inverted watermark

UNION OF SOUTH AFRICA

London Recess Pictorial Issues

SG 33. The Triangular Issues of 1926
Shade Varieties

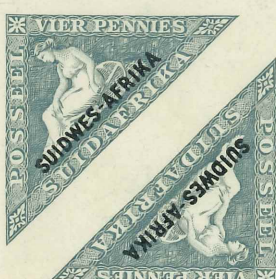


UNION OF SOUTH AFRICA





UNION OF SOUTH AFRICA



UNION OF SOUTH AFRICA

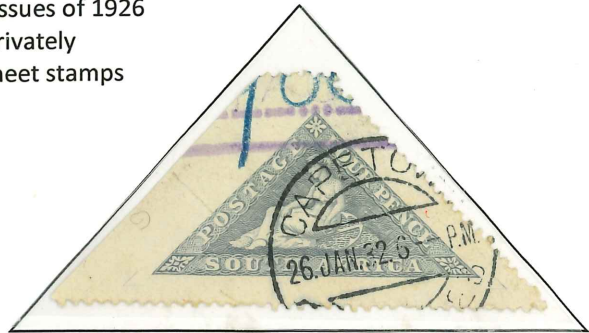
London Recess Pictorial Issues

SG 33. The Triangular Issues of 1926

V2-Perforated privately
from wide margin sheet stamps



Upright watermark; horns point towards 'POSSEEL'
Afrikaans-inscribed stamps



V1-Inverted watermark; horns point towards POSTAGE
English-inscribed stamps



Rare postal usage of Privately Perforated triangular 4d. values at Durban 112 November 1929



Upright watermark: Afrikaans inscribed



SACC 32e (2012 ed.)-Missing eyebrow on Afrikaans stamp



Large margin: Upright wmk: English inscribed



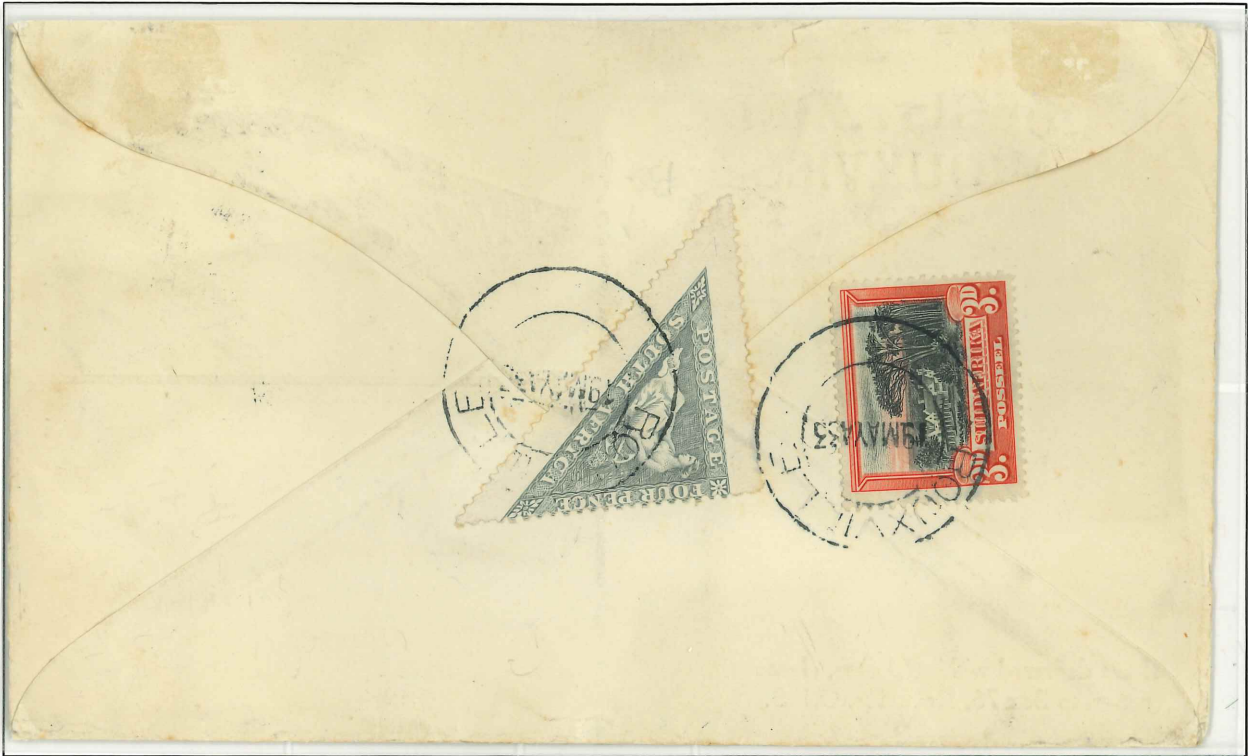
Inverted watermark: Afrikaans inscribed: Used at Port Elizabeth in 1926

UNION OF SOUTH AFRICA

London Recess Pictorial Issues

SG 33. The Triangular Issues of 1926

19 May 1933 registered cover from Rouxville, Orange Free State addressed to Pretoria bearing 1927 4d Privately Perforated triangle in English and 3d London Pictorial to make up the correct rate, tied to the reverse of pre-printed registered envelope by Rouxville, 19 May 1933 cds. Scarce usage of the perforated triangle value.



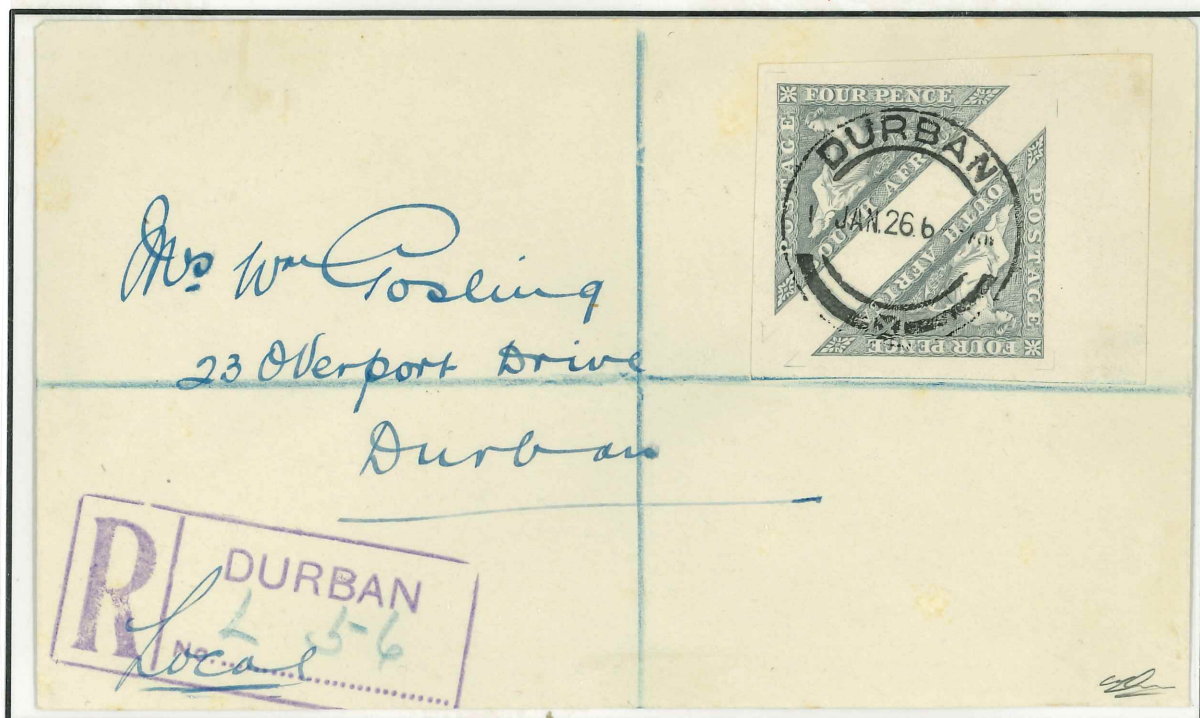
UNION OF SOUTH AFRICA

London Recess Pictorial Issues

The Triangular Issue of 1926

SG 33 Plate 1. 4d. Grey-Blue

Extremely scarce 1 January, 1926 First Day Covers for the 4d. Triangular issue bearing pairs of large margin English and Afrikaans stamps, each



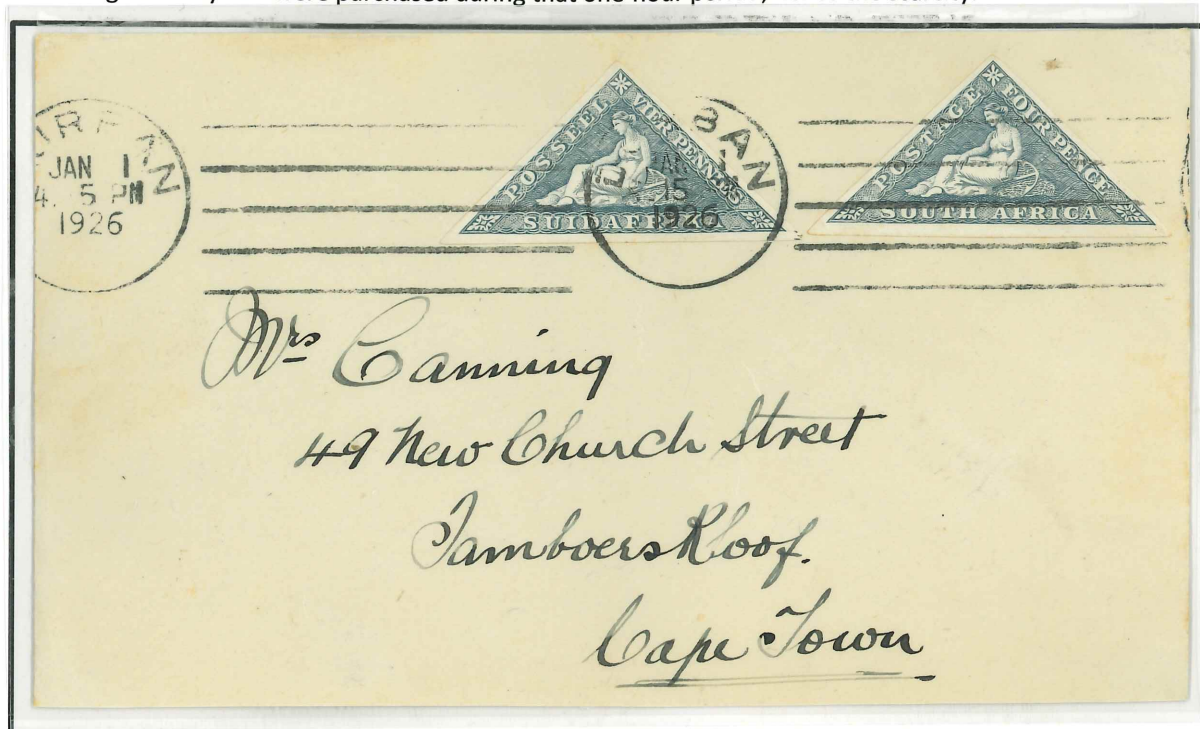
UNION OF SOUTH AFRICA

London Recess Pictorial Issues

The Triangular Issue of 1926

SG 33 Plate 1. 4d. Grey-Blue

Extremely Scarce First Day Cover for the 4d. Triangular issue bearing one small margin English and Afrikaans stamp, each from single stamp packets, posted 1 January 1926 in Durban.⁴ It was government policy to open post offices for an hour on holidays. Theoretically, all covers bearing First Day cds' were purchased during that one-hour period; hence the scarcity.⁵



Scarce First Day Cancel at the small town of Politsi, TVL



26 mm. "POLITSI/1 JAN 26" cds
Putzel, No 1 or 2 16/80

⁴ As a point of interest the handwriting on this cover and the two previous covers seem identical. Too bad, there is no return address.

⁵ Gibbons states the First Day of Issue was 2 January but the FDC at the end of this section proves 1 January. The Union Handbook, *ibid.* prefers 1 January.