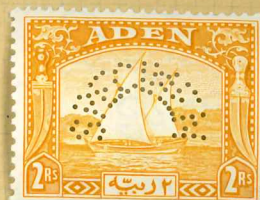
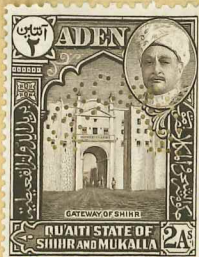


Aden.

1937-



1942





LOT PARTIALLY SCANNED

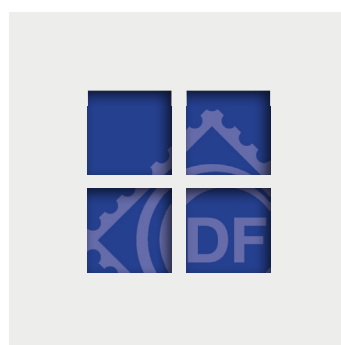
Due to the size or the complexity of this lot,
only selected items are shown

LOT PARTIELLEMENT SCANNÉ

Du à la taille ou à la complexité de ce lot, ceci est une selection

LOS IST NUR TEILWEISE GESCANNT

Aufgrund des Umfangs und Vielschichtigkeit dieses Loses
werden nur ausgewählte Stücke getzeigt

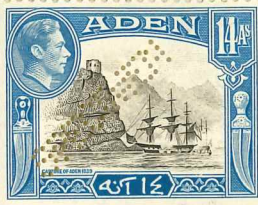


Aden

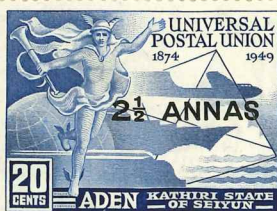


1945

1946



1949



Bahrain

1933-36.



Brunei (Bril)

All stocks to paper

1907.



1908.



1910.



Brunei (Britt. besitzn)

1911



1911-12
stock

1912



1923



1926

1927



1929

1931



1933

1937



1947

Brunei (Britt. besitzn.)



1948

1949



1950



Ceylon

1904.



1908



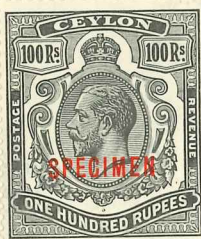
1910.



1910.



1912.



1915.



1919

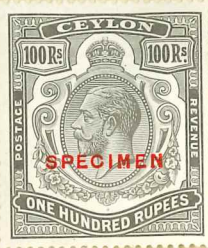


1921.



Ceylon

1923.



1926.



1928.



1929.



1935.



1936.



1937.



Ceylon.

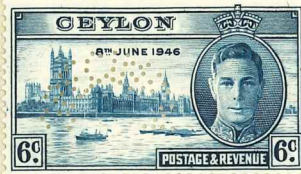
1938.



1942



1947



1948



1949

1950



1954

1953

1952



Britt. Indien

1905



1905



China expeditionary force. 1906.



1907



1909.



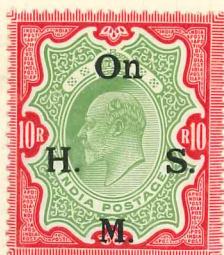
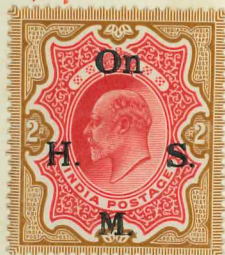
1907



1907.



1909.



1910.



Britt. Indien

1912



1913



1913



1913

1912



1913

1913



1913



1914



Britt. Indien

1915: stock
SG 0109: fine*

1915.



1919.



1921.



1926.



1927.



Brit. Indien.

1927.



1928.



1930.



1931.



1932.

1934.



1935.



1936.



1937.



Britiska Indien.

1937



1939

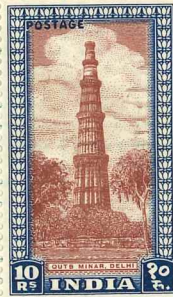
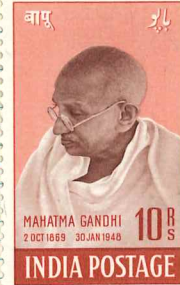
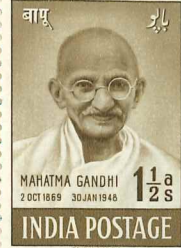
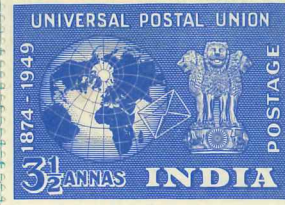
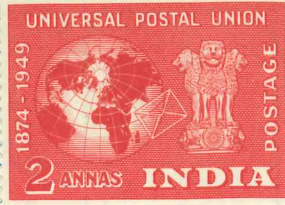
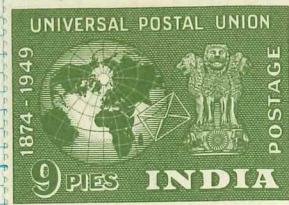


1943



1950

India



Hongkong (Engelsk besitt.)

1906.



1907.

1910.

1911.



1912-3



1915.

1916.



1919



Stuck
down

Hongkong

1922



1923



1925



1926



1927



1928



1931



1933



1935



1937



1938



1941



1942



1946



1946

Hongkong.

1947

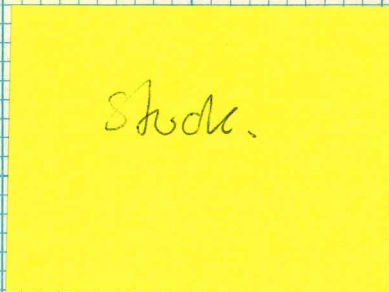


1948

1949

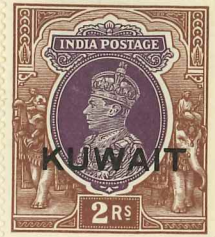
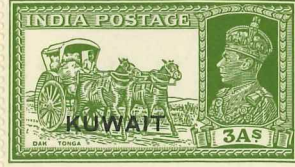


1953-1954



Kuwait.

1939.



1949



1948



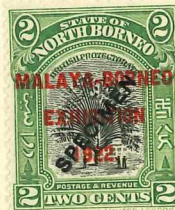
North-borneo

1909-16: stock

1909.



1922



Northborneo.

1922.



1924.

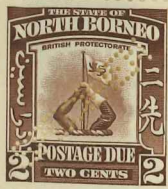
1925.

1930.



1931.

1938.



1946



Nordborneo

1946

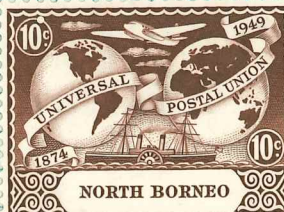


1947

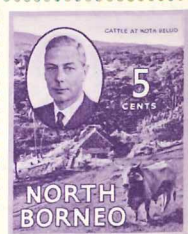
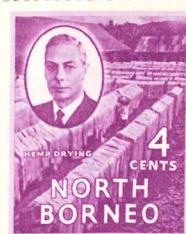
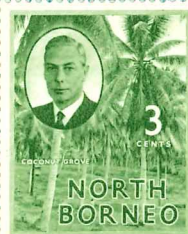
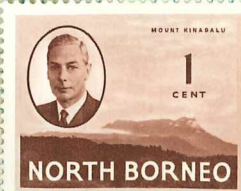
1948



1949



1950



Palestina

1918



1920.



1921.



1922



1923.



Palestina.

1924



1927.



1928.

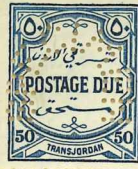
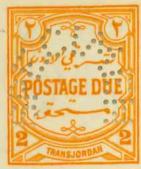


1929.



Palestina.

1929.



1930.



1932.



1933.

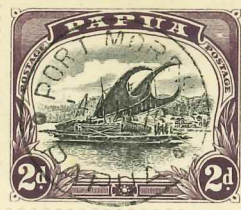


1942.

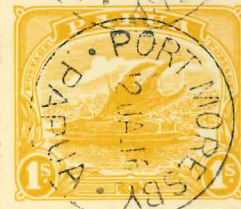


Papua

1910.



1916.



1917



1918



1920.

1920.

Papua.

1920.



1930.

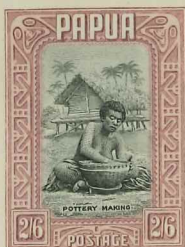
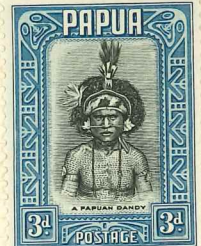


1931.



1932.

1933.



1936.



Malay States.

1906.



1908.



1918



1918



1920.



1921.



1923.



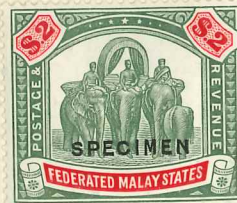
1924.



1925.



1926.



1927.



1928.



1929.



1931.



Malaystairna.

1931.



1932.



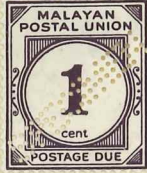
1934.



1936.



1938.



1949

Malaya



Selangor.

1936.



1937.



1941.



1949



1953



1952



Sarawak

1918



1922



1923

1928



1932



Sarawak.

1934.



1941.



1947



Straits settlements

1904.



1906.



1907.



1909.



1910.



1911.



Partly
stock
down



1913.



1915



1917.



1918



Straits Settlements.

1921.



1922



1923.



1924.

1925.



1926.

1927.

1929.

1931.

1932.

1935.

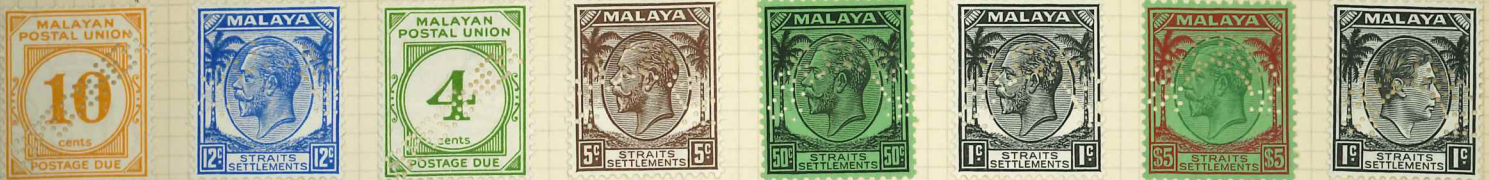


Straits Settlements.

1936.



1937.



1938.



1941.



1948



Perak.

1936.



1937.



1938.

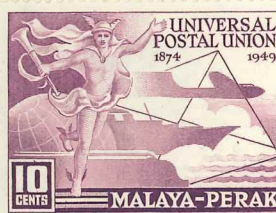


1939.



1940.

1941.



1950



1952



1953

Kedah.

1912



1919.



1920.



1921.



Kedah

1921.



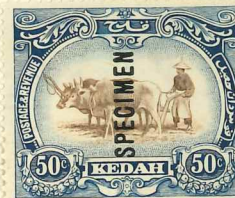
1923.



1924.



1926.

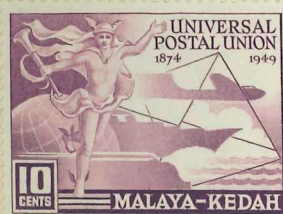


1936.

1937.



1949



Kelantan (Britt besitttr.)

1910.



1915.



1921.

1923.



1925.



1926.



1927.



1929.



1937.



Kelantan.

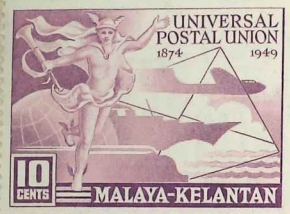
1937



1940



1949



1951



1952



1953



Johore

1918



1919



1921.



1924.

1925.

1926.

1928.



1936:

1937.



1940.



Pahang.

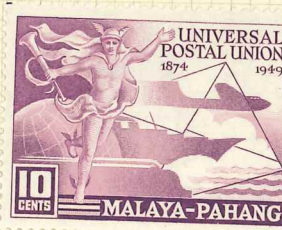
1936.



1937.

1941.

1949



1950



1952



1953



Negri Sembilan.

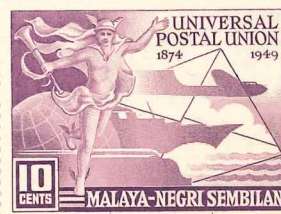
1936.



1937.

1941.

1949



1952



1953



Tonga

1919-20.



1934.



1936.



1938.



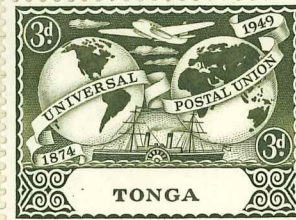
1942-1943



1944



1949



1951



Transjordanien.

1933



1934



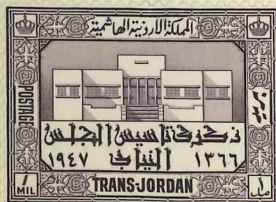
1946



1947



1948



Transvaal

1905.



1908



1909.



1910.



1907.



Trengganu (Britt. besitn.)

1910.



1911.



1915.



1919



1921.



1925

Trengganu.

1926.



1929.

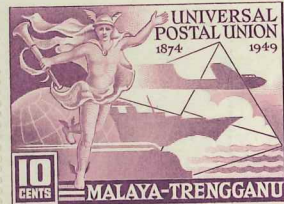
1937.



1938.



1949



1950



1952



1953



Trinidad (British besitz.)

1906.



1909.



1913.



1915.



1921.



1925.



1925.



1929.



1947

Trinidad & Tobago

1922.



Trinidad & Tobago

1939



1941



1944



1946



1947



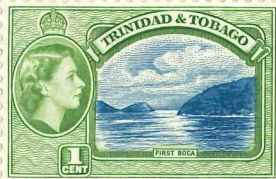
1949



1951



1953



Turk. och Caicos öarne (Britt. Col.)

1908.



1909.



1912



1913



1916.



1918



1919.



1922



7
Turks & Caicos Isl.
~~Caicos Islands~~

1910



1911.



1921.



1923



1925.



1926.



1928.



1935.



1937



1938



Turks & Caicos Islands

1938



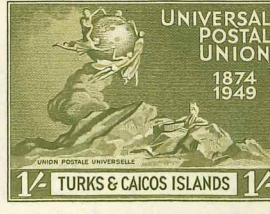
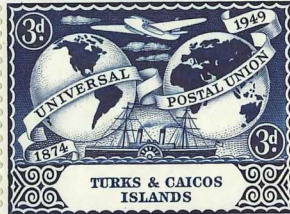
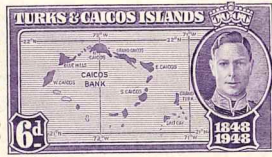
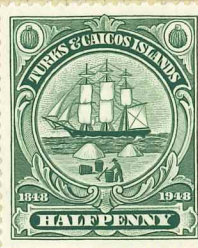
1945



1946



1949



1948



1950

