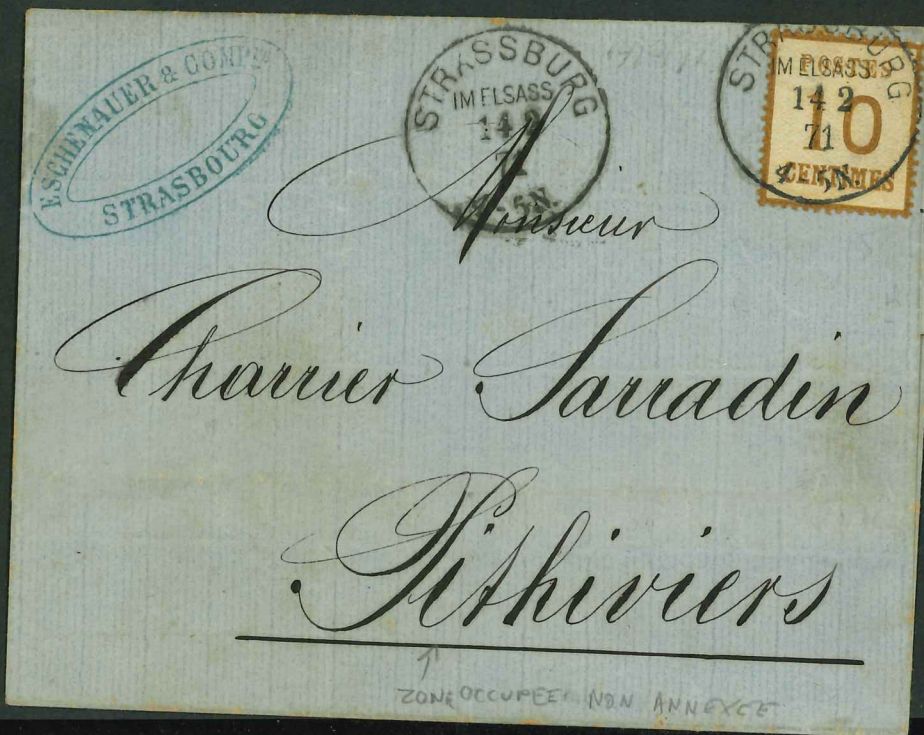


203-41



203-42



203-43



203-44



203-45



203-46



203-49



203-50



203-51



203-52



203-53



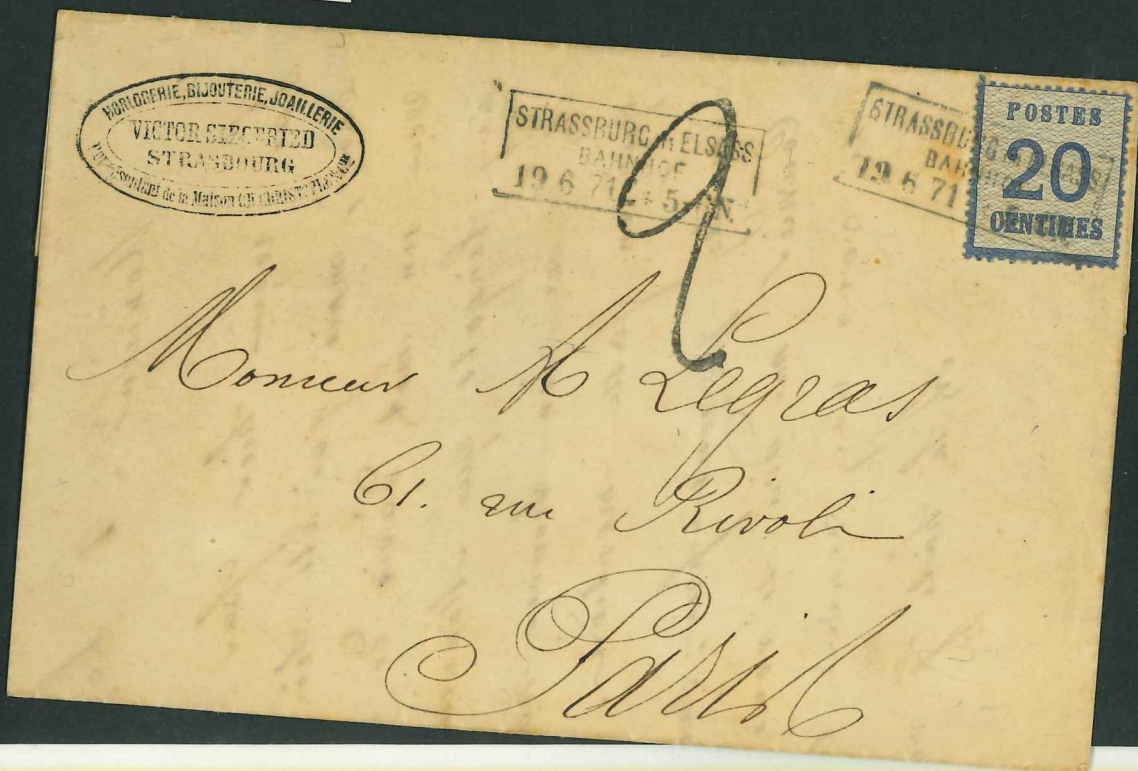
203-54



203-55



203-56



203-57



203-58



203-59



203-60



203-63



203-64



203-65



203-66



203-67



203-68



203-69

Monsieur
 Augac *conroye*
 Theatre à
 Troyes. au

PARIS
 15/29
 DEC
 ETRANGER

23 2
 2-3

203-70

Monsieur
 Louis Roederer.
 Reims. me

CH. FISCHER
 STRASBOURG

STRASBURG IM ELSSASS
 12-11
 3-9




P.D.

203-71




 Madame
 1^{re} Courte à
 Metzelle 10 Puttelange

203-72

 Monsieur
 Louis Hoederer
 20 Reims.

203-73



203-74



203-75



203-76



203-77

An
 Herrn Major
 von ~~Wittgenstein~~
 in
 Garmisch
 Bayern



203-78

Herrn Leiff, Lindbäumen
 in Garmisch, Bannhofstein
 (Königs-Platz)



203-81



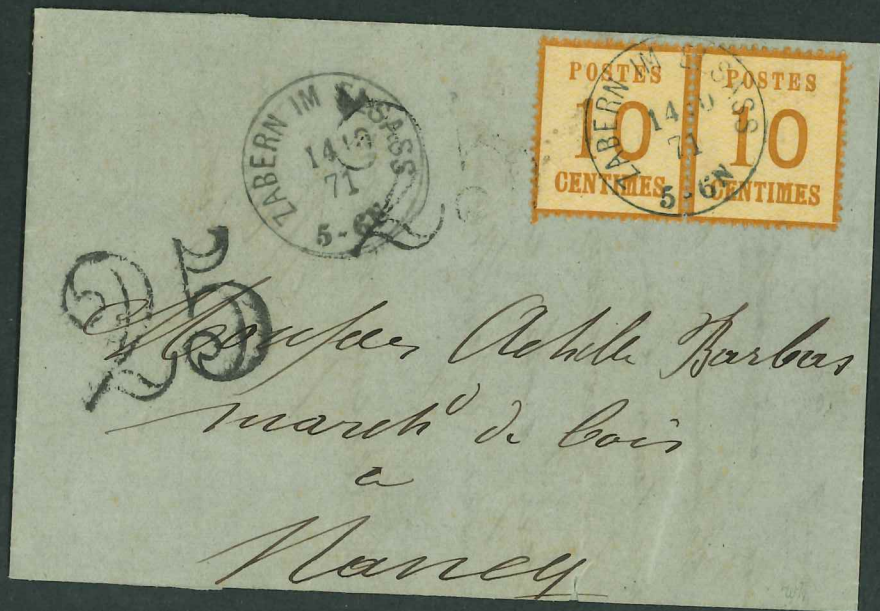
203-82



203-83



203-84



203-85

John

SCHWETZHEIM
12 4
11
G-7A

Messieurs
Léon Racine & General
Lons le Saunier
France

POSTES 10 CENTIMES
POSTES 10 CENTIMES

203-86

renverse

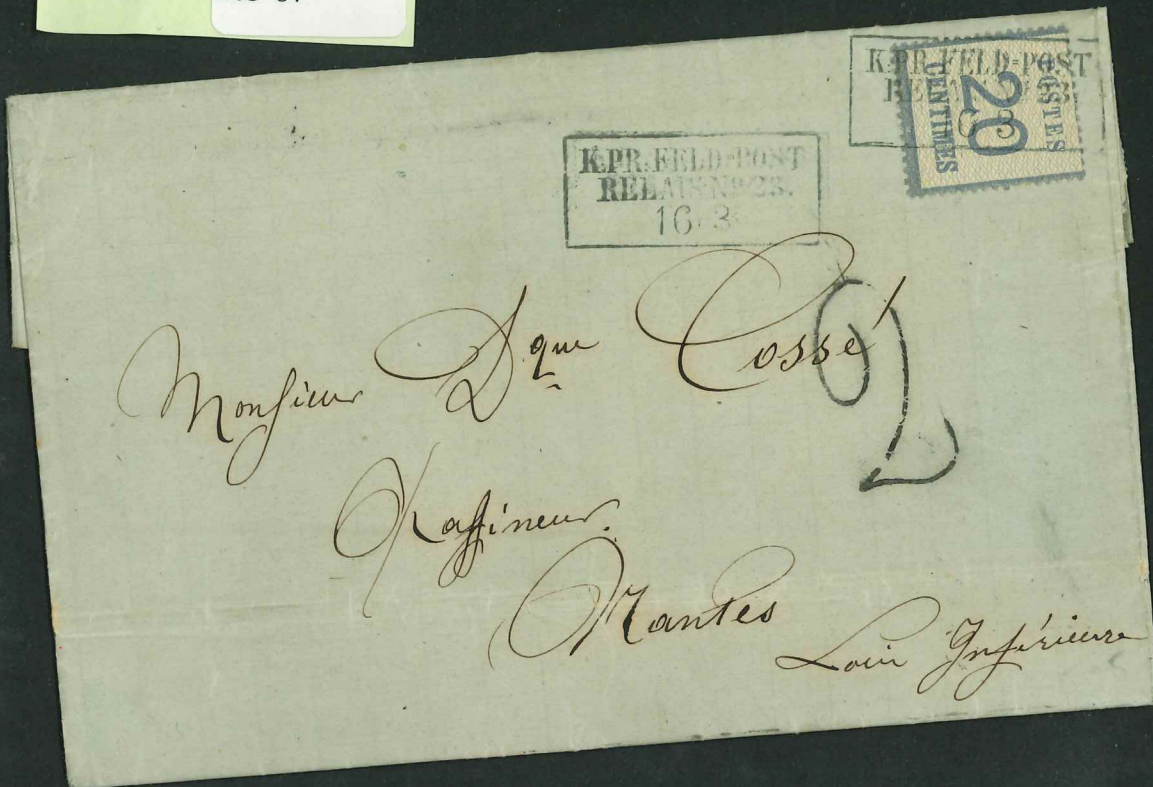
HENRI ROGER & Co
KAYSERSBERG

Messieurs
Pungnaud & Demoine
Paris
25 Rue de Poliveau près le jardin
des Plantes

KAYSERSBERG 10 CENTIMES
KAYSERSBERG 10 CENTIMES

KAYSERSBERG
67
71
7-8V.

203-87



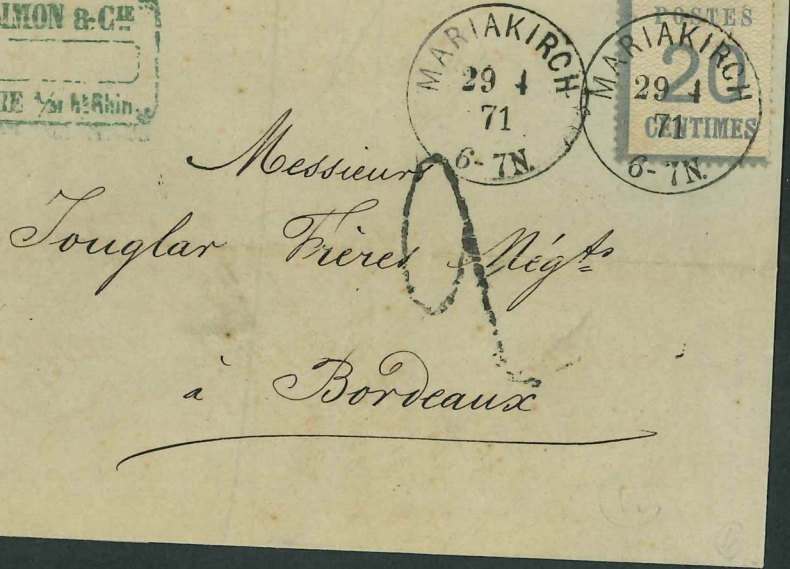
203-88



203-89



203-90



203-91

I. TOURNIER
MULHOUSE



*Monsieur
Caumont
Hans en Grady
Narbonne*



fran. (Aide)

203-92

PD

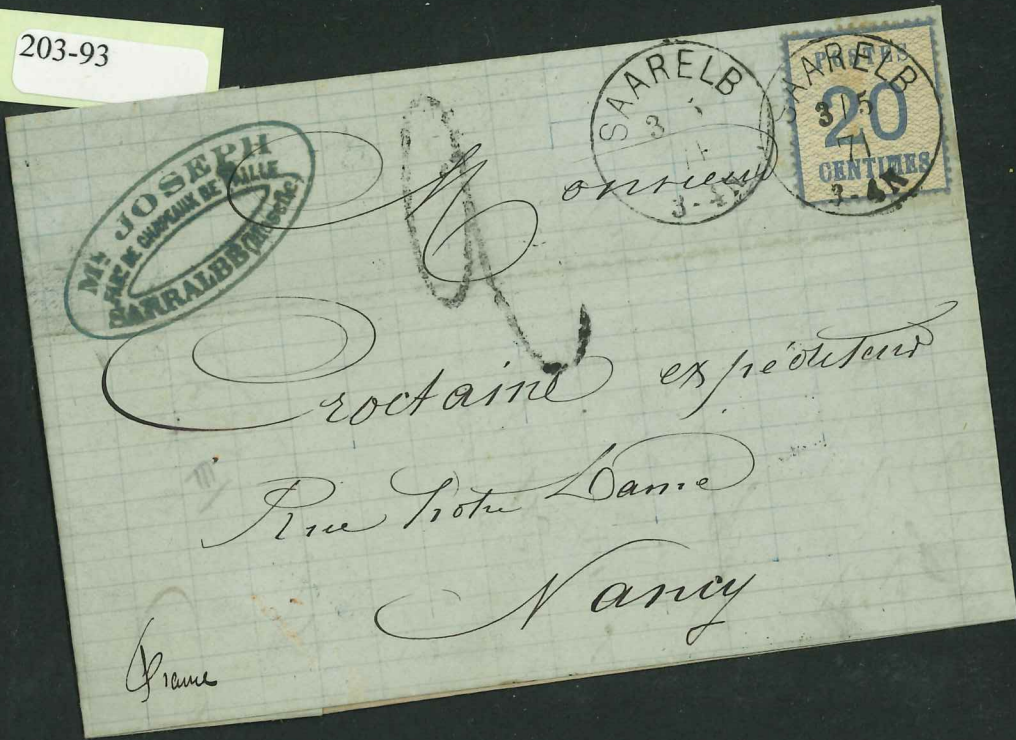
*Monsieur
A. M. Persico fu g.*

Florence

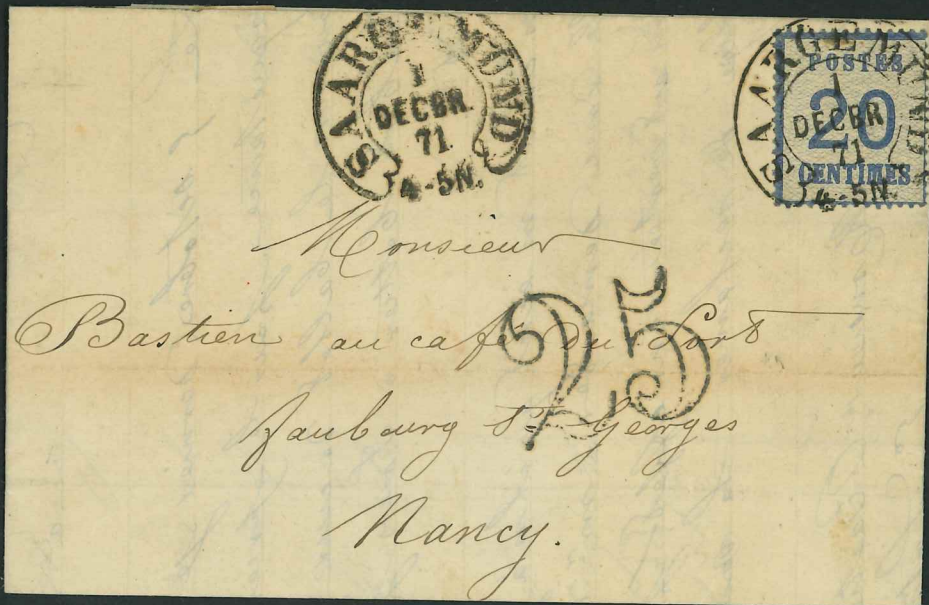


Ch. L.

203-93



203-94



203-95



203-96

203-97

203-98



203-99




 Monsieur
 Foret
 ChalonsurSaône
 (Saône Saône)

203-100




 Monsieur
 Morel
 rue Turbigo
 Paris

Alsace. Lorraine

16

n° 1

Bloc de 16

cote unité 700.-

Bloc. 700 x 16 = 11.200

Prix

5/10

F.S.A.

A. Barbe



203-101



enclage inverse

203-102