

Turkey

Turkey or The Ottoman Empire as it was known until 1923 was a founder member of the U.P.U. The ancient postal history goes back to about 300 B.C. but not until 1863 did the first adhesive stamps appear. The original Ottoman Empire had been vast; stretching from the Arabian Peninsular across Africa to the North of Spain but had been eroded during the middle ages and by the end of the Great War had shrunk to its present size, becoming a Republic.

Litho on thin paper, imperf
State printing works, Constantinople.

1863-64

Each row of stamps on the sheet are placed tête-bêche to the next row, the space between the stamps is overprinted with a coloured band.



Thick surface coloured paper imperf

1864



Thin paper coloured through

1864



1863.

Postage Due

These stamps are not strictly postage dues as they were applied to mail that had been paid but where no stamps were available



No coloured bands

1863-64



1865. The Duloz type

The star and crescent design, type printed by Poitevin, Paris were overprinted by a circle in Turkish characters reading "Posts of the government of Turkey". The lower group spelled the value but the upper group (Osmanie) always varied for each issue

1st Jan 1865

دولتی



Rays missing around stars



The missing rays are from worn cliches and exist for the 20 paras and 1 piastre.

Postage Dues.

There was a 10 para prepared but it was not issued



1868-72. The Duloz type for postage due

The star and crescent design, New top character as shown below. Perf 13½

28th Oct. 1868

28th Oct. 1868.

Inscription and border in red-brown. Perf 13½



1870 perf 5-11½ irregular.



1870-72. Inscription and border in grey brown. Perf 13½

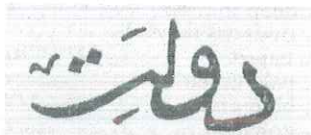


As above perf 5-11½.



1868. The Duloz type

The star and crescent design, New top character as shown. Printed Istanbul, typo. Perf 12½
28th Oct. 1868



March 1871

Sewing machine perf 5-11½ irregular.



1873

Perf 12-12½



1867. The Duloz type

The star and crescent design, New top character as shown. Perf 12½

Jan 1867

دولت

Only the 2 and 5 pi. were issued other values sometimes seen c.t.o.



Postage Dues.

For this group only the 20 pa. Brown was issued



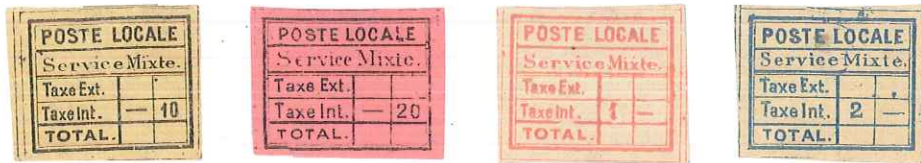
stamps issued for local post within Istanbul by the private company Linnos

Turkish Local posts
1865. Liannos local Constantinople locals

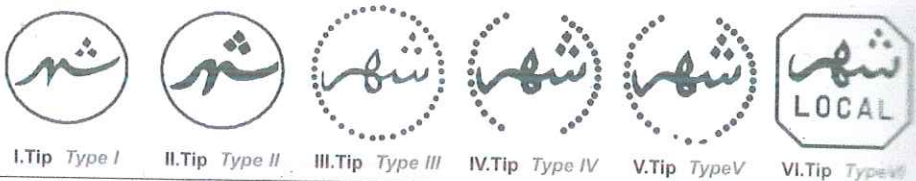
Engraved. Perkins Bacon & C^o



1866 Lannios postage Dues.



Overprints for official Government locals for Istanbul local post.



Local for Mount Athos



Private local posts for the Kustendje and Gzernawoda railway and steamship C^o.



Turkey

1876 Duloz type surcharged.



1898 Military Post for use in Thessaly. Perf $13\frac{1}{2}$ each side.



Used in Volos (Greece)



1875. The Duloz type

The star and crescent design, New top character as shown. Perf 12-13

Jan. 1875



Note the stamp also exists imperf



Perf 13½.



1876-77 change in top character. Perf 13½



1881-82. Colours changed.



1876. The above surcharged in French currency

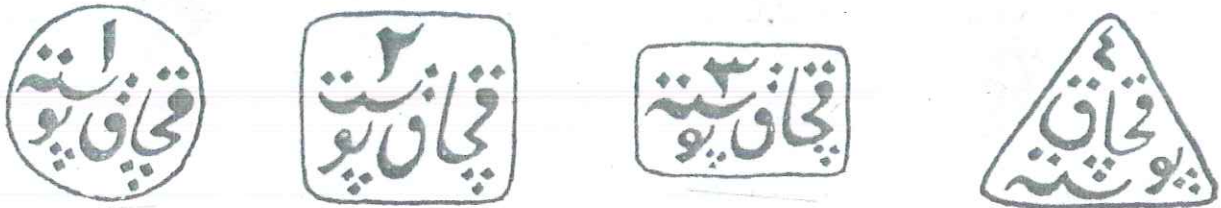


The Kachak stamps

The Kachak stamps, or "smugglers" and/or "Contraband" stamps were those stamps overprinted with the Turkish word Kachak, (contraband) that were applied to letters found being carried by travellers and merchants to avoid postal charges. The word smuggler or contraband is unfortunate as these stamps are actually postage dues. At first a hand stamp Fig. 1 was struck on the letter and the carrier had to pay double the postage charge. Later remaindered postage stamps of 1869-1888 were overprinted as fig.2 to 5. And these were placed on the letters. The Turkish numerals 1-4 on the overprinted stamps probably referred to the department dealing with the issue. Later, about 1892 a double lined frame Fig. 6 containing the word "contraband in both French and Turkish was applied.



Fig. 1



Figs 2-5



Fig. 6

Blocks with tête-bêche Turkish numerals



2 and 3 in block



3 and 4 in block

Katchak stamps of Turkey.

دولت عثمانیه

On Duloz type of 1876-7, with red local overprint



1 Piastre, yellow. Perf 13½

Katchak type 1

Black.



Red.



Blue.



Type 2

Black.



Red.



Blue.



Type 3

Black.



Red



Blue.



Type 4

Black.



Red.



Blue.



Local red, Katchak hand-stamp inverted or sideways.



Katchak stamps of Turkey.

Overprinted on Ottoman types of 1884-86. 1 pi. blue. Perf 13½

Katchak type 1



Black.



Red.



Blue.



Type 2



Black.



Red.



Blue.



Type 3



Black.



Red.



Blue.



Type 4



Black.



Red.



Blue.



Katchak hand-stamp inverted or sideways.



27th Sept 1876. The Ottoman type

Perf 13¼. Typo. Government printing works Istanbul.



Postcard. Constantinople to London 13TH Feb 1877.



1880. New values and colours. Perf 13½



Piastres

Piastre

Perf 11½ and imperf



1884-86. The Ottoman type

Single colours.



1886 Colours changed



1886 The above imperf.



1888 Colours changed



1888. Postage dues.



1890. Single colours on grey, thin transparent paper. Perf 13½.



1890 Bisected and surcharged in Bahdad.



The boxed "Imprimé"
overprint was hand stamped

1891-1894 Newspaper and printed matter stamps.

Stamps of the Ottoman type of 1890 overprinted



Overprint in red



1892. As above on 1892 Arms type.



1894 Printed matter overprinted in Turkish script.



14 March 1901. Issue for internal mail. Typo, perf 13 1/2.



1905 as above perf 12.



10 pa
green



25 pi
brown

50 pi
fawn

1901 Over-printed for printed matter.



1905, as above perf 12.



10 pa
green



1 pi
blue

5 pi
fawn.

1901 Postage due.



Turkey

14 March 1901. Issue for foreign mail. Typo perf 13½.



As above perf 12



1901 Overprinted for printed matter.



W. W. Key & Co
Sept 1905. New designs, type perf 12.



B. Perf. 13 1/2.



C. Perf 12 x 13 1/2.



576

Turkey etc

1905 issue overprinted for printed matter. Perf 12.



B. Perf 13 1/2



5 pi

C. Perf 12 x 13 1/2.



Overprinted ب (B) for Behi'e (discount) Perf 12.



Perf 12 x 13 1/2



Imperf, perf 13 1/2 and Postage due

13 1/2



Turkey
 1908. New types, type, engraved by Kazmi, type perf 12.



50pi

B. Perf 13 1/2



C. Perf 12 x 13 1/2



25pi

50pi

Turkey

1908 Issue overprinted for printed matter and "B" (bébé) perf 12



B Perf 13 1/2



C Perf 12 x 13 1/2



1908 Discount stamps P12.



B. Perf 13 1/2

Due

1 pi
Due
.13 1/2



Perf. 12 x 13 1/2.



Turkey A

۱۳۲۴ 17 Dec 1908. Commemorating the constitution. Typo, perf 12.



B. Perf 13 1/2



C. Perf 12 x 13 1/2



Stamps of 1910 Cancelled in Salonica, Greece 7-11-12.



Perf-in BIO



Turkey etc

Sultan Mohamed V 1909. Stamps from plate I. Perf 12, 13 1/2 and 12 x 13 1/2. Typo.



1910-11 Stamps from plate II Perf 12.



B. Perf 13 1/2.



C. Perf 12 x 13 1/2.



1909. Overprinted for printed matter. P 12



28/12.

CARTE POSTALE

L. Wimmer!
 Ihre lange Karte ist
 wunderbar schön und
 hat mich sehr erfreut.
 Ich habe sofort an die Mutter
 geschrieben, dass sie
 Ihnen schreiben soll.
 Ich hoffe, dass Sie
 bald wieder nach Hause
 kommen werden.
 Ich liebe Sie sehr
 und hoffe, dass Sie
 bald wieder nach Hause
 kommen werden.
 Ich liebe Sie sehr
 und hoffe, dass Sie
 bald wieder nach Hause
 kommen werden.

Correspondance

Schillingstr. 1

Adresse

M

L. Wimmer
 M. Schilling
 Berlin - Tempelhof
 Schillingstr. 1



31. Schillingstr. M. J. 1912

1909 Printed matter stamps continued. Perf 13½ and 12 by 13½.

Due P12



12 x 13½

Due P12

2 pi

13½

12 x 13½

1909-11 Discount stamps with "B" overprint. Perf 12.



Due

B. Perf 13½

Due

1 pi



2 pi

2 pi

Due

C. Perf 12 x 13½

Due 12 x 13½

1 pi



1 pi

1 pi

Postcard to Belgium 13.3.13. Last day of issue.

Constantinople. Les Iles des princes.

Chère Madame
Bonne nuit, le monde est si triste
on échange les lettres postales,
et les enfants font les mêmes
circulaires plus. Je vous envoie
cette carte car me me souvenir
des vents humides, et non ceux
demain avec un nouveau.
Mes amitiés à toute la famille,
j'embrasse les petits de tout cœur.
votre
Moukhopha

Chère Madame

13.3.13
13.3.13
13.3.13



Madame Ley
84 rue Wagon

Liege

Belgique

1910. Stamps of 1909 surcharged in blue.

P. 12.



P. 13 1/2



P 13 1/2 x 12



June 1911. The Sultan's visit to Macedonia.

Monastir



"Monastir" OMITTED

Pristina



Salonika



Uskub.



1909 Jaffa overprint for the Accession of Sultan Resad.



June 1911. Sultan visit to Monastir.
On 1901 interior issue.



2 pi

5 pi

25 pi

50 pi

On 1901 printed matter.

5 pa



2 pi

5 pi

On external stamps.



5 pi
25
50



Turkish 1913 Commemorative cover

Cover, Galata 3.11.13 to Munich with 1913 "Recapture of Adrianople" issue of Oct 1913.



The cover is almost certainly "philatelic" and is being sent to a German stamp dealer.

Turkey etc
1913 G.P.O. Constantinople. Typo, p. 12.



Discount stamps "B" on the above.



Postage due.



25 Oct 1913 Recapture of Adrianople. P. 12.



Postage Due



Turkey
~ 14 Jan 1914 ~



*Os Turkey etc
Mar 1916 Occupation of Sinai.*



1916. 50th Anniv of Constantinople post. p. 12 1/2



1916 National Fête, overprint



1916-17. Sultan Mohamed V.



As 1916 but perf 13 1/2 + 11 1/2



13 1/2

13 1/2

13 1/2

13 1/2

13 1/2

To Turkey etc

1917-19. War time issues



1917-18



July 1918 Sultan Mohamed VI



1918 Currency stamps



1917 + 1918 in perf 11 1/2



1918-1920. Provisional Postage due stamps
Issued in Galata Istanbul.



Turkey
 July 1919. Overprints for 1st Anniv of Sultan's Accession.



Dues.

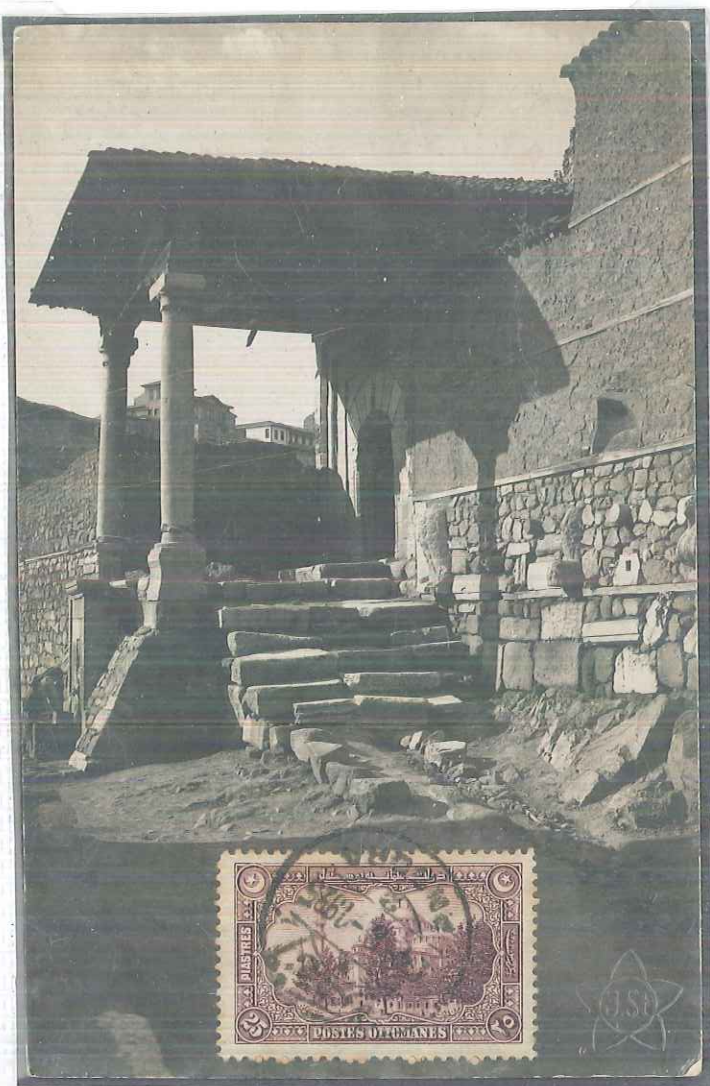


20
 scarlet

1pi
 blue

2pi
 blue

Philatelic postcard, Angora (Ankara) to Funchal, Madeira
24 Aug 1925



Turkey
 1920. Post War issues.
 Printed matter.



As 1913 but Tougra changed



1921-22 Surcharges.

