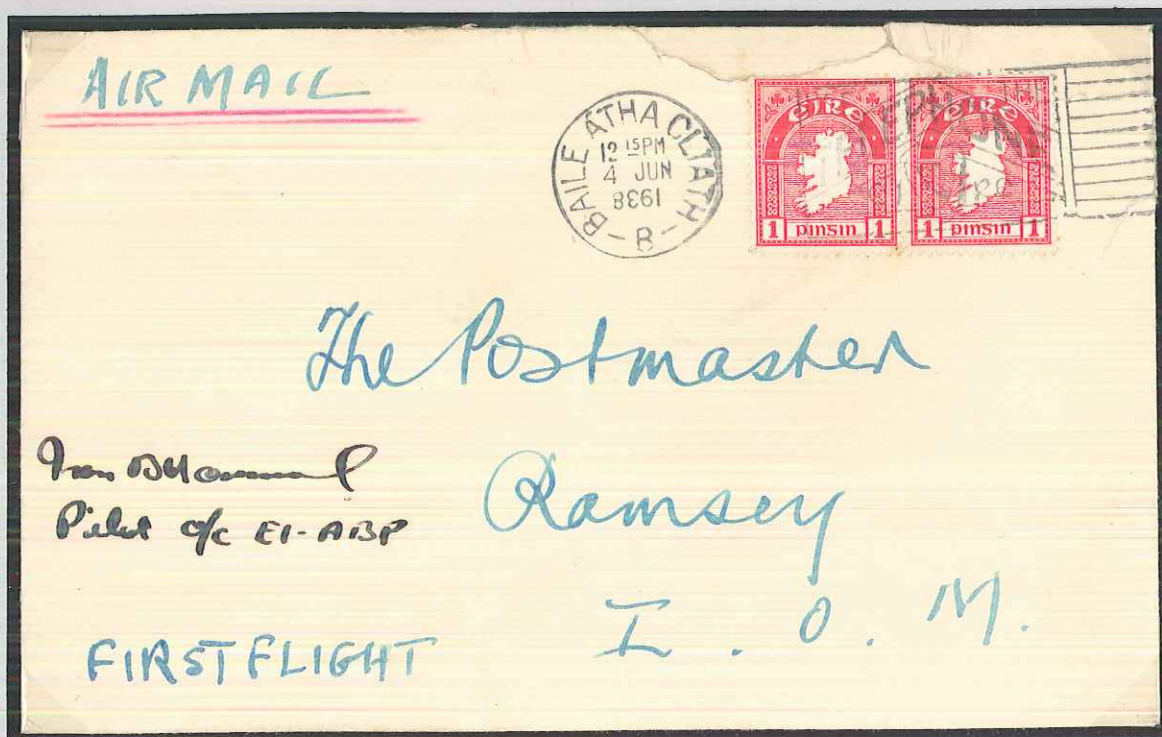
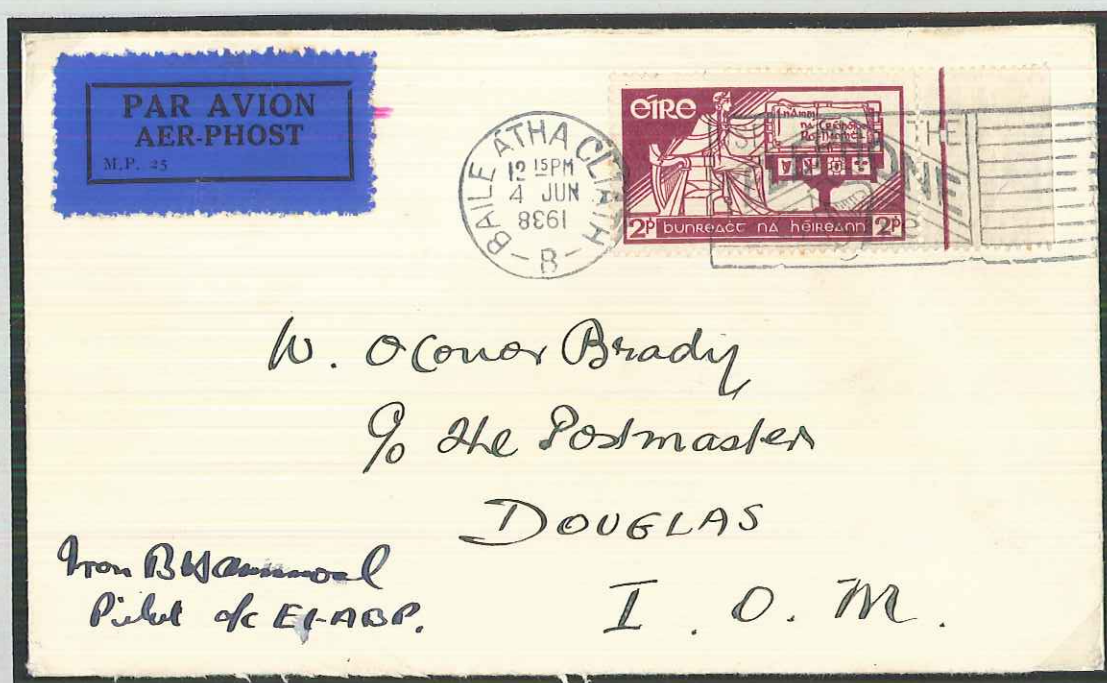


THE SECOND SEASON OF SUMMER FLIGHTS TO THE ISLE OF MAN:
FIRST FLIGHT SERVICE DUBLIN - DOUGLAS BY ♣ AER LINGUS

June 4, 1938



Posted on June 4, 1938, 12.00 p.m., and carried Dublin - Douglas by ♣ Aer Lingus, opening the second season of summer flights to the Isle of Man.

Douglas arrival postmark of June 4. Signed by the pilot, Capt. Ivan B. Hammond.

The experimental service to the Isle of Man proved to be a success in 1937, and the route was operated again in 1938 from June 4 - September 19.

First flight on June 4 was made by DH Dragon Rapide EI-ABP "Iolar II", carrying 3½ lb. of mail.

**THE SECOND SEASON OF SUMMER FLIGHTS TO THE ISLE OF MAN:
FIRST FLIGHT SERVICE DUBLIN - DOUGLAS BY ♣ AER LINGUS**

June 4, 1938



Posted on June 4, 1938, 12.15 p.m., and carried *Dublin - Douglas* by ♣ Aer Lingus, opening the second season of summer flights to the Isle of Man.

Douglas arrival postmark of June 4, 8.30 p.m.

Returned still on June 4 to Dublin, probably by surface mail.

The experimental service to the Isle of Man proved to be a success in 1937, and the route was operated again in 1938 from June 4 - September 19.

First flight on June 4 was made by Capt. Ivan B. Hammond in DH Dragon Rapide EI-ABP "Iolar II", carrying 3½ lb. of mail.

SECOND SEASON OF MAIL-CARRYING FLIGHTS TO THE ISLE OF MAN:
FLIGHT SERVICE BY ✱ AER LINGUS DUBLIN - DOUGLAS

July 25, 1938



Two identical covers, posted in Dublin on July 25, 1938, 12.15 a.m.,
and carried on July 25 with flight service by ✱ Aer Lingus Dublin - Douglas,
DOUGLAS / ISLE OF MAN arrival postmarks of July 25.
Flight services left Baldonnell at 1.45 p.m. each day (except Sundays),
reaching Douglas at 2.45 p.m.

1938 services started on June 4 and ended on September 19.

Mails carried on intermediate flight services are scarce.

Accompanied by a letter of H.S. Redgrove to Mr. McDonald, dated June 26, 1939,
explaining the background of this and the last flight in 1938,
the latter one "...expected to fetch a fairly steep price".

THE SECOND SEASON OF SUMMER FLIGHTS TO THE ISLE OF MAN:
LATER FLIGHT SERVICE DUBLIN - DOUGLAS BY ♣ AER LINGUS

July 25, 1938 / June 26, 1939

FROM H. S. REDGROVE, B.Sc., F.I.C., F.R.H.S., CONSULTING CHEMIST.

THE THATCHED COTTAGE,
OXFORD ROAD,
PANGBOURNE, BERKS.

PHONE: PANGBOURNE 31.

REPLY TO

8, SAXON ROAD,
SELHURST,
LONDON, S.E.25.

PHONE: THORNTON HEATH 1885.

26/6/39

Dear Mr. McDonald,

Thank you for yours of the 25th and enclosure.

Your Aer Lingus Teoranta cover bears the correct postmark, and is, as you stated, an intermediate flight cover of the 1938 season. These intermediate covers, though not quite so interesting as first and last flight covers, are very good property. As a matter of fact I tried to get some intermediate flight covers myself in 1938, but my Irish correspondent failed, on both occasions, to post at the correct time, with the result that none were flown. However, on the occasion of the last flight of 1938, a friend managed to get eight covers posted for himself and me. Strangely enough, the covers were not delivered^{re} in Douglas until the next morning, and this made me suspect that something had gone wrong with them, although they bore the correct Dublin (Baile Atha Cliath) postmark (12.15 p.m.) I therefore sent one to the Head Postmaster at Dublin for vetting, and he pronounced them definitely as flown, and said there was delay in the I.O.M. Exactly what caused this delay I have never been able to discover. The covers are very rare, as only 11 oz. of mail was flown on that day (19 Sept. 1938). I have disposed of all my duplicate copies long ago, but I believe my friend has one left. If you would like it I will enquire the price. I expect it will be fairly steep.

Yrs sincerely H. S. Redgrove

**SECOND SEASON OF MAIL-CARRYING FLIGHTS TO THE ISLE OF MAN:
FLIGHT SERVICE BY * AER LINGUS DUBLIN - DOUGLAS** (IOM19382 AL)

July 25 - September 19, 1938 / October 10, 1938

COPY

Dept. of Posts and Telegraphs,
DUBLIN,

10 October 1938.

ENCL'S

Sir,

In reply to your communication of the 24th ultimo, I have to inform you that the letters posted on the 13th and 20th July last, the covers of which are returned herewith, were posted too late to connect with the Air Mail from this office to Douglas I.O.M., and were forwarded with surface mails. The item posted on the 19th September, the cover of which is also returned, was forwarded by Air Mail. Owing to the late arrival of the Plane, the latter item failed inclusion in the afternoon delivery. As the addressees are Private Box renters at Douglas the items are not included in the first delivery next morning but are held for subsequent delivery to the Corporation's Messenger.

I am, Sir,

Yours obedient Servant,

(signed) P.J.Waese

Controller.

H.S.Redgrove Esq.

EARLY ♣ AER LINGUS SERVICES TO CROYDON:
"WRITING ON THE WALL"

September 2, 1938



Topical Press Photo, dated September 2, 1938:

"This is a view of the aircraft markings board at Croydon. The writing on the wall shows clearly that Czecho-Slovakia is O.K."