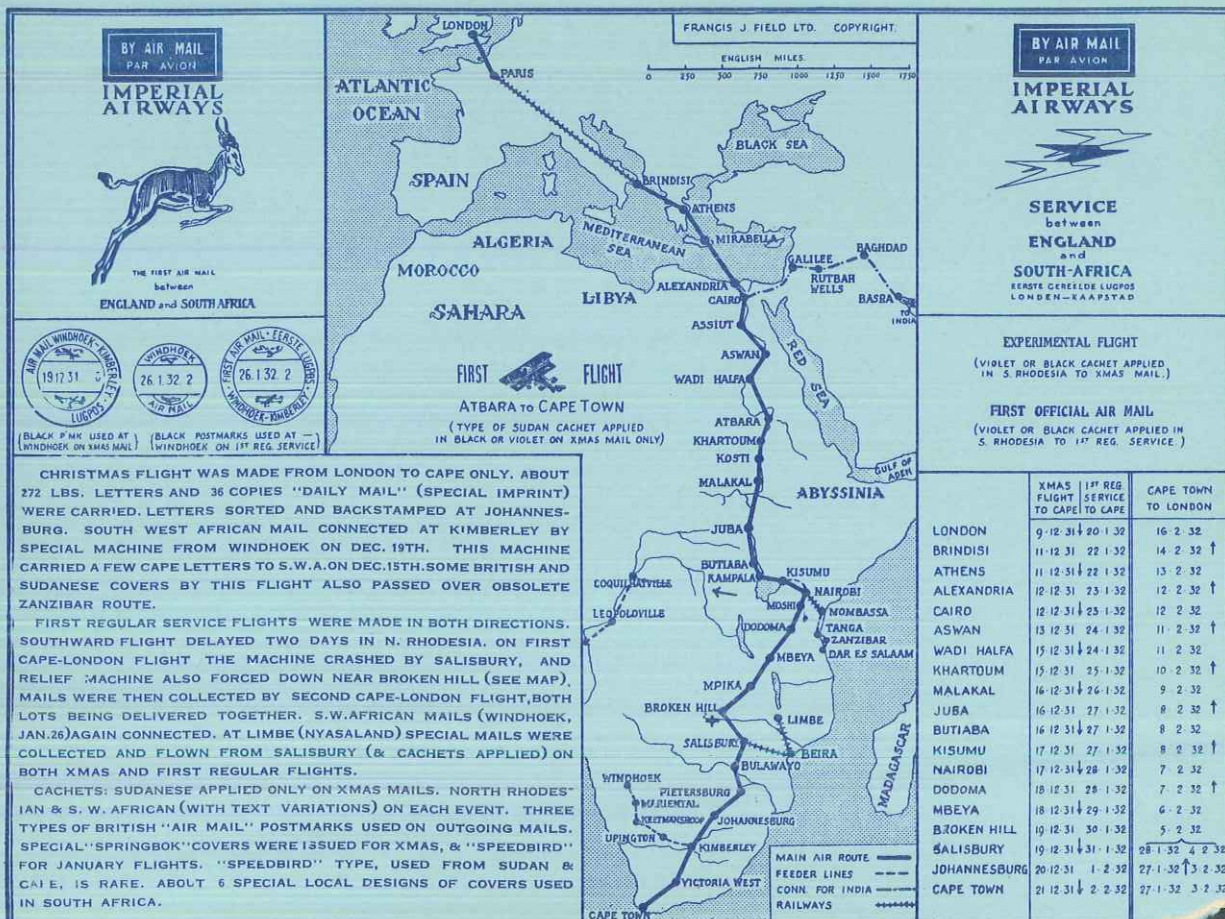


# CHRISTMAS AND FIRST REGULAR AIRMAIL SERVICE BY IMPERIAL AIRWAYS LONDON - CAPE TOWN: MAP PREPARED BY FRANCIS J. FIELD

December 9, 1931 / January 20, 1932

## SOUTH AFRICA, 1932.

### FIRST FLIGHT TO ENGLAND.





CHRISTMAS FLIGHT SERVICE LONDON - CAPE TOWN BY IMPERIAL AIRWAYS:  
LONDON - NAIROBI

December 9, 1931



Posted Dublin on December 5 and 8, 1931,  
and carried on December 9 with extended Christmas flight service **AS 41**  
by Imperial Airways London - Nairobi.

**NAIROBI / KENYA** arrival postmark of December 17, 5.00 p.m.  
Nairobi was the first stop of the extended route to Cape Town.

The route was Nairobi - (Zanzibar) - Moshi - Dodoma - Mbeya - Mpika - Broken Hill - Salisbury - Bulawayo - Pietersburg - Johannesburg - (South West Africa with Upington - Keetmanshoop - Windhoek) - Kimberley - Victoria West - Cape Town.



**CHRISTMAS FLIGHT SERVICE LONDON - CAPE TOWN BY IMPERIAL AIRWAYS:  
LONDON - NAIROBI**

**December 9, 1931**



Posted **PAQUETBOT / DUN LAOGHAIRE** on December 5, 1931,  
and carried on December 9 with extended Christmas flight service **AS 41**  
by Imperial Airways *London - Nairobi*.

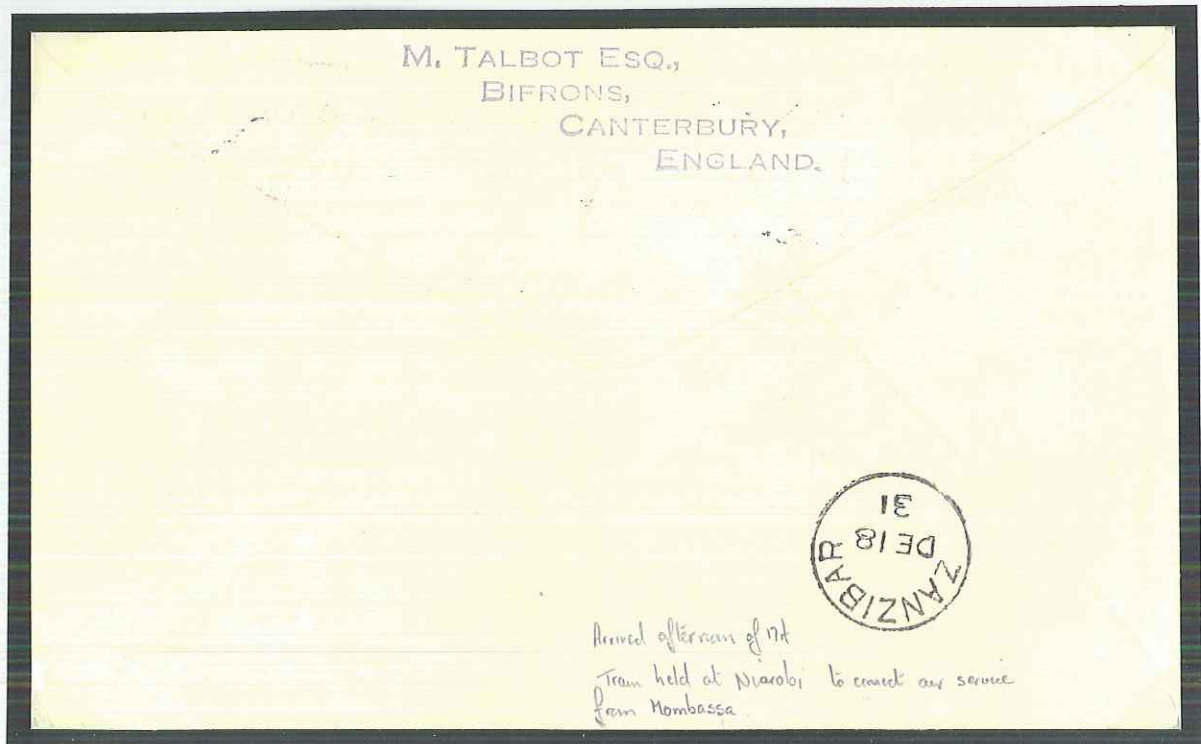
**NAIROBI / KENYA** arrival postmark of December 17, 5.00 p.m.  
Nairobi was the first stop of the extended route to Cape Town.

*Highly unusual with "CASH'S WASHING RIBBONS" booklet pane.*

The route was Nairobi - (Zanzibar) - Moshi - Dodoma - Mbeya - Mpika - Broken Hill - Salisbury - Bulawayo - Pietersburg - Johannesburg - (South West Africa with Upington - Keetmanshoop - Windhoek) - Kimberley - Victoria West - Cape Town.

**CHRISTMAS FLIGHT SERVICE LONDON - CAPE TOWN BY IMPERIAL AIRWAYS:  
LONDON - NAIROBI AND MOMBASA - ZANZIBAR**

**December 9, 1931**



Posted Dublin on December 5, 1931,  
and carried on December 9 with extended Christmas flight service **AS 41**  
by Imperial Airways London - Nairobi, forwarded by train to Mombasa  
and carried with airmail service Mombasa - Zanzibar.

**ZANZIBAR** arrival postmark of December 18.

Nairobi was the first stop of the extended route to Cape Town.  
Scarcest Irish acceptance for expended Christmas flight by Imperial Airways.

The route was Nairobi - (Zanzibar) - Moshi - Dodoma - Mbeya - Mpika - Broken Hill - Salisbury - Bulawayo - Pietersburg - Johannesburg - (South West Africa with Upington - Keetmanshoop - Windhoek) - Kimberley - Victoria West - Cape Town.



**CHRISTMAS FLIGHT SERVICE  
LONDON - CAPE TOWN BY IMPERIAL AIRWAYS:  
LONDON - MBEYA, TANGANYIKA**

**December 9, 1931**



Posted Dublin on December 4, 1931,  
and carried on December 9 with extended Christmas flight service **AS 41**  
by Imperial Airways

London - Mpika, Northern Rhodesia.

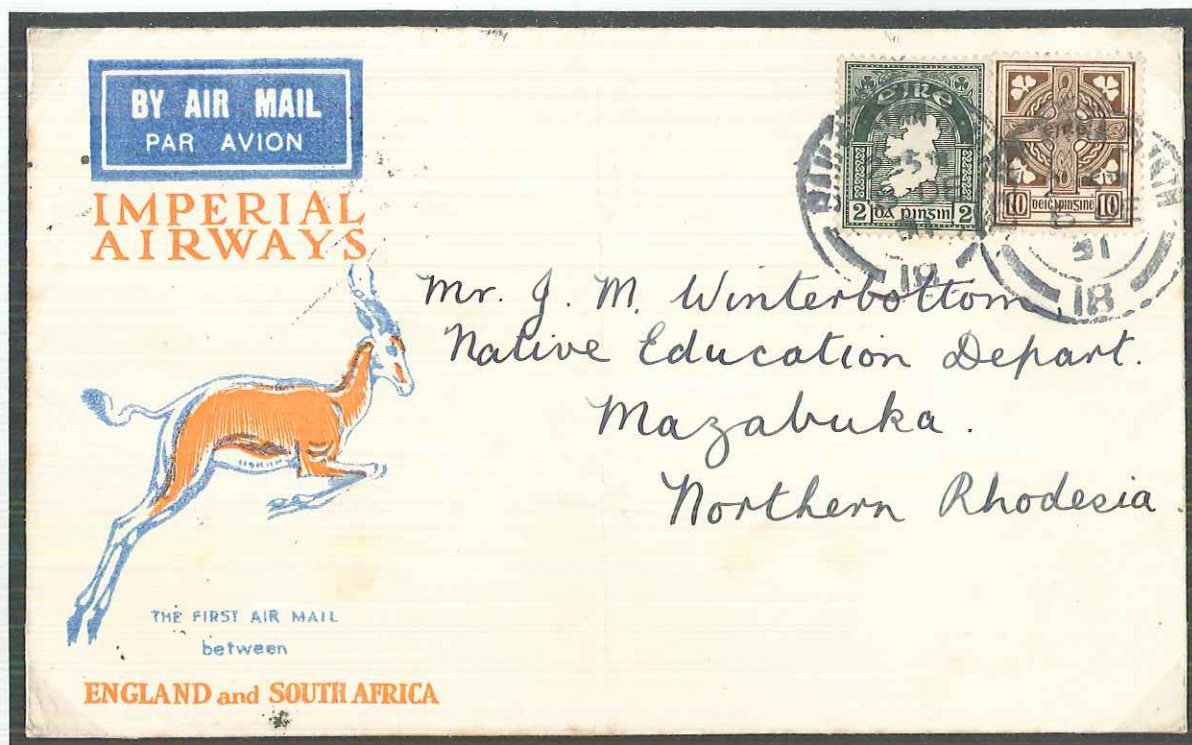
**MPIKA / NORTHERN RHODESIA** arrival postmark of December 18.

Mpika was the fifth stop of the extended route to Cape Town.

The route was Nairobi - (Zanzibar) - Moshi - Dodoma - Mbeya - Mpika - Broken Hill - Salisbury - Bulawayo - Pietersburg - Johannesburg - (South West Africa with Upington - Keetmanshoop - Windhoek) - Kimberley - Victoria West - Cape Town.

**CHRISTMAS FLIGHT SERVICE LONDON - CAPE TOWN BY IMPERIAL AIRWAYS:  
LONDON - BROKEN HILL, NORTHERN RHODESIA**

**December 9, 1931**



Posted Dublin on December 8, 1931,  
and carried on December 9 with extended Christmas flight service **AS 41**  
by Imperial Airways London - Broken Hill, Northern Rhodesia.

**BROKEN HILL** arrival postmark of December 19.

Broken Hill was the sixth stop of the extended route to Cape Town.



Posted **PAQUETBOT / DUN LAOGHAIRE** on December 5, 1931,  
and carried on December 9 with extended Christmas flight service **AS 41**  
by Imperial Airways London - Broken Hill, Northern Rhodesia.

**BROKEN HILL** arrival postmark of December 19.

The route was Nairobi - (Zanzibar) - Moshi - Dodoma - Mbeya - Mpika - Broken Hill - Salisbury - Bulawayo - Pietersburg - Johannesburg - (South West Africa with Upington - Keetmanshoop - Windhoek) - Kimberley - Victoria West - Cape Town.



**CHRISTMAS FLIGHT SERVICE LONDON - CAPE TOWN BY IMPERIAL AIRWAYS:  
LONDON - SALISBURY, SOUTHERN RHODESIA**

**December 9, 1931**



Posted Dublin on December 8, 1931,  
and carried on December 9 with extended Christmas flight service **AS 41**  
by Imperial Airways London - Salisbury, Southern Rhodesia.

**SALISBURY / S. RHODESIA** arrival postmark of December 19, 6.00 p.m.  
Salisbury was the seventh stop of the extended route to Cape Town.

The route was Nairobi - (Zanzibar) - Moshi - Dodoma - Mbeya - Mpika - Broken Hill - Salisbury - Bulawayo - Pietersburg - Johannesburg - (South West Africa with Upington - Keetmanshoop - Windhoek) - Kimberley - Victoria West - Cape Town.



**SOUTHERN RHODESIAN POST OFFICE LABELS FOR  
CHRISTMAS MAILES CARRIED BY IMPERIAL AIRWAYS SALISBURY - LONDON  
AND FORWARDED TO BELFAST AND TO THE IRISH FREE STATE**

**December 9, 1931**

2745—5,000.27.9.29. **EXPERIMENTAL FLIGHT**  
**SOUTHERN RHODESIA.**

**DEPARTMENT OF POSTS AND TELEGRAPHS.**

**IRISH FREE  
STATE**

Despatching Officer..... *B. Vernon*

Despatching  
office stamp  
**SALISBURY**

1433—1500.28 **EXPERIMENTAL FLIGHT**  
**SOUTHERN RHODESIA.**

**Department of Posts and Telegraphs.**

Despatching  
office stamp. **BELFAST**  
**(Forward)**

Despatching Officer..... *B. Vernon*

**1**

Post Office labels, issued by the Salisbury "Despatching Officer"  
for mails to be carried by the Christmas Mail flight Salisbury - London  
and forwarded to BELFAST and to the IRISH FREE STATE.  
Highly unusual.



**CHRISTMAS FLIGHT SERVICE LONDON - CAPE TOWN BY IMPERIAL AIRWAYS:  
LONDON - BULAWAYO, SOUTHERN RHODESIA**

**December 9, 1931**



Posted Dublin on December 8, 1931,  
and carried on December 9 with extended Christmas flight service **AS 41**  
by Imperial Airways London - Bulawayo, Southern Rhodesia.  
**BULAWAYO / S. RHODESIA** arrival postmark of December 20, 10.00 a.m.  
Bulawayo was the eighth stop of the extended route to Cape Town.

The route was Nairobi - (Zanzibar) - Moshi - Dodoma - Mbeya - Mpika - Broken Hill - Salisbury - Bulawayo - Pietersburg - Johannesburg - (South West Africa with Upington - Keetmanshoop - Windhoek) - Kimberley - Victoria West - Cape Town.



**CHRISTMAS FLIGHT SERVICE LONDON - CAPE TOWN BY IMPERIAL AIRWAYS:  
LONDON - MBEYA, TANGANYIKA**

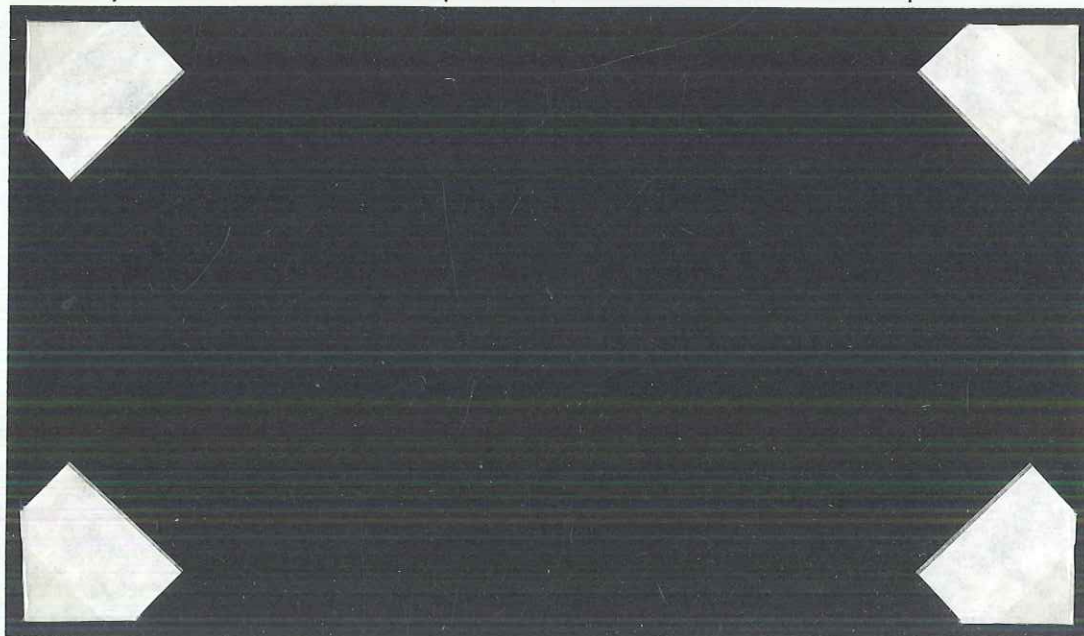
**December 9, 1931**



Posted Dublin on December 8, 1931,  
and carried on December 9 with extended Christmas flight service **AS 41**  
by Imperial Airways London - Mbeya, Tanganyika.

**MBEYA** arrival postmark of December 18.

Mbeya was the fourth stop of the extended route to Cape Town.



Posted **PAQUETBOT / DUN LAOGHAIRE** on December 5, 1931,  
and carried on December 9 with extended Christmas flight service **AS 41**  
by Imperial Airways London - Mbeya, Tanganyika.

**MBEYA** arrival postmark of December 18.

*Highly unusual with "INDIA RUBBER INLAID SPONGE" booklet pane in green.  
This is the only known such booklet pane on cover - probably unique.*

The route was Nairobi - (Zanzibar) - Moshi - Dodoma - Mbeya - Mpika - Broken Hill - Salisbury - Bulawayo - Pietersburg - Johannesburg - (South West Africa with Upington - Keetmanshoop - Windhoek) - Kimberley - Victoria West - Cape Town.



**CHRISTMAS FLIGHT SERVICE LONDON - CAPE TOWN BY IMPERIAL AIRWAYS:  
LONDON - DODOMA, TANGANYIKA**

**December 9, 1931**



Posted Dublin on December 4, 1931,  
and carried on December 9 with extended Christmas flight service **AS 41**  
by Imperial Airways London - Dodoma, Tanganyika.  
**DODOMA** arrival postmark of December 18, 2.00 p.m.  
Dodoma was the third stop of the extended route to Cape Town.



Posted **PAQUETBOT / DUN LAOGHAIRE** on December 5, 1931,  
and carried on December 9 with extended Christmas flight service **AS 41**  
by Imperial Airways London - Dodoma, Tanganyika.  
**DODOMA** arrival postmark of December 18, 2.00 p.m.  
*Highly unusual with "CASH'S WASHING RIBBONS" booklet pane.*

The route was Nairobi - (Zanzibar) - Moshi - Dodoma - Mbeya - Mpika - Broken Hill - Salisbury - Bulawayo - Pietersburg - Johannesburg - (South West Africa with Upington - Keetmanshoop - Windhoek) - Kimberley - Victoria West - Cape Town.



**CHRISTMAS FLIGHT SERVICE  
LONDON - CAPE TOWN BY IMPERIAL AIRWAYS:  
LONDON - JOHANNESBURG  
AND JOHANNESBURG - PIETERMARITZBURG  
BUT "INSUFFICIENTLY PAID FOR / LONDON - CAPE AIR SERVICE"**

**December 9, 1931**



Posted Dublin on December 7, 1931,  
and to be carried on December 9 with extended Christmas flight service **AS 41**  
by Imperial Airways  
London - Johannesburg, South Africa,  
but "**INSUFFICIENTLY PAID FOR / LONDON - CAPE AIR SERVICE**".  
Winkelmann type 2 cachet.

Carried by surface mail.

The route should have been London - Nairobi - (Zanzibar) - Moshi - Dodoma -  
Mbeya - Mpika - Broken Hill - Salisbury - Bulawayo - Pietersburg -  
Johannesburg - (South West Africa with Upington - Keetmanshoop - Windhoek) -  
Kimberley - Victoria West - Cape Town.



**CHRISTMAS FLIGHT SERVICE LONDON - CAPE TOWN BY IMPERIAL AIRWAYS:  
LONDON - PIETERSBURG, SOUTH AFRICA**

**December 9, 1931**



Posted Dublin on December 8, 1931,  
and carried on December 9 with extended Christmas flight service **AS 41**  
by Imperial Airways *London - Pietersburg*, South Africa.

**JOHANNESBURG** transit postmark of December 21, 3.30 a.m.,  
and **PIETERSBURG** arrival postmark of December 22, 10.00 a.m.  
Pietersburg was the ninth stop of the extended route to Cape Town.

The route was Nairobi - (Zanzibar) - Moshi - Dodoma - Mbeya - Mpika - Broken Hill - Salisbury - Bulawayo - Pietersburg - Johannesburg - (South West Africa with Upington - Keetmanshoop - Windhoek) - Kimberley - Victoria West - Cape Town.



**CHRISTMAS FLIGHT SERVICE LONDON - CAPE TOWN BY IMPERIAL AIRWAYS:  
LONDON - JOHANNESBURG, SOUTH AFRICA**

**December 9, 1931**



Posted Dublin on December 8, 1931,  
and carried on December 9 with extended Christmas flight service **AS 41**  
by Imperial Airways London - Johannesburg, South Africa.  
**JOHANNESBURG** arrival postmark of December 21, 3.30 a.m. and 7.00 a.m.  
Johannesburg was the tenth stop of the extended route to Cape Town.

The route was Nairobi - (Zanzibar) - Moshi - Dodoma - Mbeya - Mpika - Broken Hill - Salisbury - Bulawayo - Pietersburg - Johannesburg - (South West Africa with Upington - Keetmanshoop - Windhoek) - Kimberley - Victoria West - Cape Town.



**CHRISTMAS FLIGHT SERVICE  
LONDON - CAPE TOWN BY IMPERIAL AIRWAYS:  
LONDON - JOHANNESBURG, SOUTH AFRICA**

**December 9, 1931**



Posted **PAQUETBOT / DUN LAOGHAIRE** on December 5, 1931,  
and carried on December 9 with extended Christmas flight service **AS 41**  
by Imperial Airways

London - Johannesburg, South Africa.

**JOHANNESBURG** arrival postmark of December 21, 3.30 a.m. and 7.00 a.m.  
Johannesburg was the tenth stop of the extended route to Cape Town.

The route was Nairobi - (Zanzibar) - Moshi - Dodoma - Mbeya - Mpika - Broken Hill - Salisbury - Bulawayo - Pietersburg - Johannesburg - (South West Africa with Upington - Keetmanshoop - Windhoek) - Kimberley - Victoria West - Cape Town.



**CHRISTMAS FLIGHT SERVICE LONDON - CAPE TOWN BY IMPERIAL AIRWAYS:  
LONDON - JOHANNESBURG AND JOHANNESBURG - UPINGTON**

**December 9, 1931**



Posted Dublin on December 8, 1931,  
and carried on December 9 with extended Christmas flight service **AS 41**  
by Imperial Airways London - Johannesburg  
and carried with special airmail service by South West African Airways  
Johannesburg - Upington, South Africa.

**JOHANNESBURG** transit postmark of December 21, 3.30 a.m.,  
and **UPINGTON** arrival postmark of December 21.  
Johannesburg was the tenth stop of the extended route to Cape Town  
and Upington was the first stop en route to South West Africa.

The extended route into South West Africa was  
Johannesburg - Upington - Keetmanshoop - Mariental - Windhoek.



**CHRISTMAS FLIGHT SERVICE LONDON - CAPE TOWN BY IMPERIAL AIRWAYS:  
LONDON - JOHANNESBURG AND JOHANNESBURG - KEETMANSHOOP**

**December 9, 1931**



Posted Dublin on December 8, 1931,  
and carried on December 9 with extended Christmas flight service **AS 41**  
by Imperial Airways London - Johannesburg  
and carried with special airmail service by South West African Airways  
Johannesburg - Keetmanshoop, South West Africa.

**JOHANNESBURG** transit postmark of December 21, 3.30 a.m.,  
and **KEETMANSHOOP / S.W.A.** arrival postmark of December 21.  
Johannesburg was the tenth stop of the extended route to Cape Town  
and Keetmanshoop was the second stop en route to South West Africa.

The extended route into South West Africa was  
Johannesburg - Uppington - Keetmanshoop - Mariental - Windhoek.



**CHRISTMAS FLIGHT SERVICE LONDON - CAPE TOWN BY IMPERIAL AIRWAYS:  
LONDON - JOHANNESBURG AND JOHANNESBURG - WINDHOEK**

**December 9, 1931**



Posted Dublin on December 4 and 8, 1931,  
and carried on December 9 with extended Christmas flight service **AS 41**  
by Imperial Airways London - Johannesburg  
and carried with special airmail service by South West African Airways  
Johannesburg - Windhoek South West Africa.

**JOHANNESBURG** transit postmark of December 21, 3.30 a.m.,  
and special **AIR MAIL WINDHOEK - KIMBERLEY LUGPOS** arrival postmark  
of December 21, 7.00 a.m.

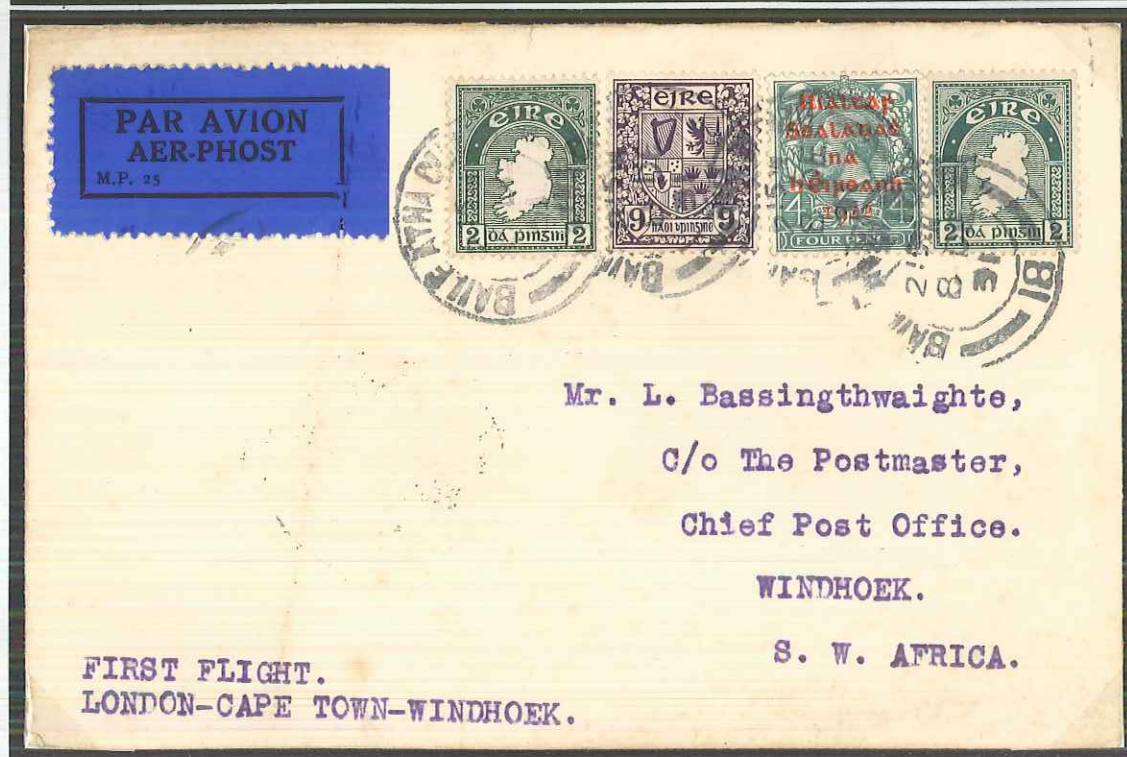
Johannesburg was the tenth stop of the extended route to Cape Town  
and Windhoek was the fourth and final stop en route to South West Africa.

The extended route into South West Africa was  
Johannesburg - Upington - Keetmanshoop - Mariental - Windhoek.



CHRISTMAS FLIGHT SERVICE LONDON - CAPE TOWN BY IMPERIAL AIRWAYS:  
LONDON - JOHANNESBURG AND JOHANNESBURG - WINDHOEK

December 9, 1931



Posted Dublin on December 8, 1931,  
and carried on December 9 with extended Christmas flight service **AS 41**  
by Imperial Airways London - Johannesburg  
and carried with special airmail service by South West African Airways  
Johannesburg - Windhoek South West Africa.

**JOHANNESBURG** transit postmark of December 21, 3.30 a.m.,  
and special **AIR MAIL WINDHOEK - KIMBERLEY LUGPOS** arrival postmark  
of December 21, 7.00 a.m.

Johannesburg was the tenth stop of the extended route to Cape Town  
and Windhoek was the fourth and final stop en route to South West Africa.

The extended route into South West Africa was  
Johannesburg - Upington - Keetmanshoop - Mariental - Windhoek.



**CHRISTMAS FLIGHT SERVICE  
LONDON - CAPE TOWN BY IMPERIAL AIRWAYS:  
LONDON - KIMBERLEY, SOUTH AFRICA**

**December 9, 1931**



Posted Dublin on December 8, 1931,  
and carried on December 9 with extended Christmas flight service **AS 41**  
by Imperial Airways  
London - Kimberley, South Africa.

**JOHANNESBURG** transit postmark of December 21, 3.30 a.m.,  
and **KIMBERLEY** arrival postmark of December 21, 10.15 a.m.  
Kimberley was the eleventh stop of the extended route to Cape Town.

The route was Nairobi - (Zanzibar) - Moshi - Dodoma - Mbeya - Mpika - Broken Hill - Salisbury - Bulawayo - Pietersburg - Johannesburg - (South West Africa with Upington - Keetmanshoop - Windhoek) - Kimberley - Victoria West - Cape Town.



**CHRISTMAS FLIGHT SERVICE LONDON - CAPE TOWN BY IMPERIAL AIRWAYS:  
LONDON - VICTORIA WEST, SOUTH AFRICA**

**December 9, 1931**



Posted Dublin on December 8, 1931,  
and carried on December 9 with extended Christmas flight service **AS 41**  
by Imperial Airways London - Victoria West, South Africa.  
**JOHANNESBURG** transit postmark of December 21, 3.30 a.m.,  
and **VICTORIA WEST** arrival postmark of December 21.  
Victoria West was the twelfth stop of the extended route to Cape Town.

The route was Nairobi - (Zanzibar) - Moshi - Dodoma - Mbeya - Mpika - Broken Hill - Salisbury - Bulawayo - Pietersburg - Johannesburg - (South West Africa with Upington - Keetmanshoop - Windhoek) - Kimberley - Victoria West - Cape Town.



# IRISH ACCEPTANCES FOR CHRISTMAS AIRMAIL SERVICE BY IMPERIAL AIRWAYS LONDON - CAPE TOWN

December 9, 1931



Posted Dublin on December 8, 1931, and carried on December 9 with special Christmas airmail service by Imperial Airways London - Cape Town. JOHANNESBURG transit postmark of December 21, 3.30 a.m., and CAPE TOWN arrival postmark of December 21, 8.00 p.m. Special Springbok envelope issued by Imperial Airways.



Registered envelope, posted Dublin on December 7, and carried London - Cape Town. JOHANNESBURG transit postmark of December 21, 3.30 a.m., and CAPE TOWN arrival postmark of December 21, 8.00 p.m. Registered mail for this special Christmas service is unusual.



IRISH ACCEPTANCES FOR CHRISTMAS AIRMAIL SERVICE BY IMPERIAL AIRWAYS  
LONDON - CAPE TOWN

December 9, 1931



Posted Dublin on December 8, 1931, and carried on December 9 with special Christmas airmail service by Imperial Airways London - Cape Town, South Africa.

JOHANNESBURG transit postmark of December 21, 3.30 a.m., and

CAPE TOWN arrival postmark of December 21, 8.00 p.m.

*Highly unusual with London - Mwanza souvenir envelope used in February 1931.*



Registered envelope, posted Dublin on December 7, 1931, and carried London - Cape Town.

JOHANNESBURG transit postmark of December 21, 3.30 a.m., and

CAPE TOWN arrival postmark of December 21, 8.00 p.m.

Registered mail for this special Christmas service is unusual.



IRISH ACCEPTANCES FOR CHRISTMAS AIRMAIL SERVICE BY IMPERIAL AIRWAYS  
LONDON - CAPE TOWN

December 9, 1931



Posted Dublin on December 8, 1931, and carried on December 9 with special Christmas airmail service by Imperial Airways London - Cape Town, South Africa. JOHANNESBURG transit postmarks of December 21, 3.30 a.m., and CAPE TOWN arrival postmarks of December 21, 8.00 p.m. Special Springbok envelope issued by Imperial Airways.



IRISH ACCEPTANCES FOR CHRISTMAS AIRMAIL SERVICE BY IMPERIAL AIRWAYS  
LONDON - CAPE TOWN

December 9, 1931



Posted Dublin on December 8, 1931, and carried on December 9 with special Christmas airmail service by Imperial Airways London - Cape Town.

JOHANNESBURG transit postmarks of December 21, 3.30 a.m., and

CAPE TOWN arrival postmarks of December 21, 8.00 p.m.

Special Springbok envelopes issued by Imperial Airways.



IRISH ACCEPTANCES FOR CHRISTMAS AIRMAIL SERVICE BY IMPERIAL AIRWAYS  
LONDON - CAPE TOWN

December 9, 1931



Posted Dublin on December 7, 1931, and carried on December 9 with special Christmas airmail service by Imperial Airways London - Cape Town, South Africa.  
JOHANNESBURG transit postmarks of December 21, 3.30 a.m., and  
CAPE TOWN arrival postmarks of December 21, 8.00 p.m.  
Complete set of O'Connell set of commemorative stamps.

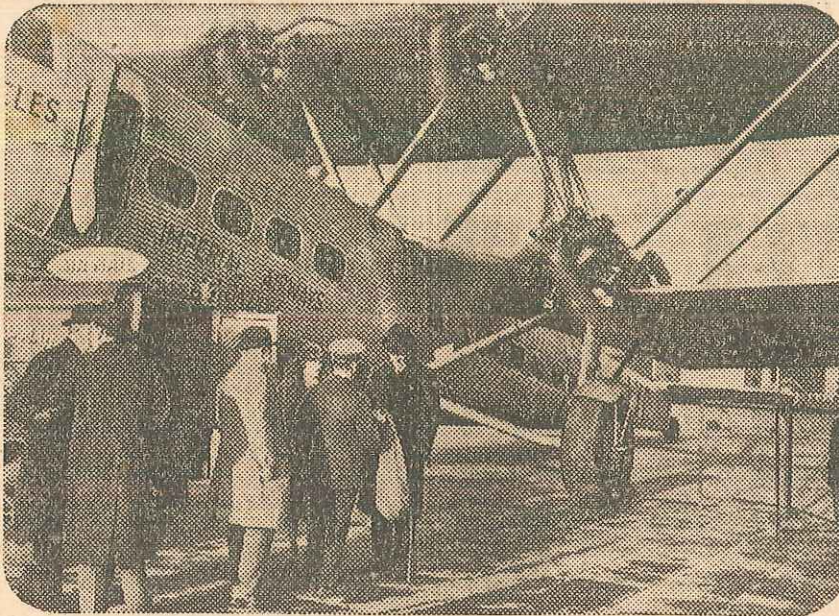


**"CHRISTMAS AIR MAIL FOR SOUTH AFRICA":  
CHRISTMAS AIRMAIL SERVICE TO SOUTH AFRICA BY IMPERIAL AIRWAYS  
LONDON - CAPE TOWN**

**December 9, 1931**

**y, The Daily Mail DECEMBER 10, 1931:**

**CHRISTMAS AIR MAIL FOR SOUTH AFRICA**



Mr. C. T. de Water, the High Commissioner for South Africa, and his wife, inspecting mailbags at Croydon yesterday when the Christmas Air Mail left for South Africa.



**AFRICAN AIR MAIL.**—The first section of the Imperial Airways route to the Cape was inaugurated on Saturday, when the City of Coventry left Croydon with a large consignment of mails.

**LONDON TO CAPETOWN  
AIR MAIL NEXT MONTH.**

The longest air mail route in the world, stretching for 8,000 miles from London to Capetown, is to be opened for regular traffic by Imperial Airways on January 20.

30/12/31