

8th World Cup

England

1966



8th World Cup

England

1966

World Cup Draw
COMBINATION COVER

Kensington Draw

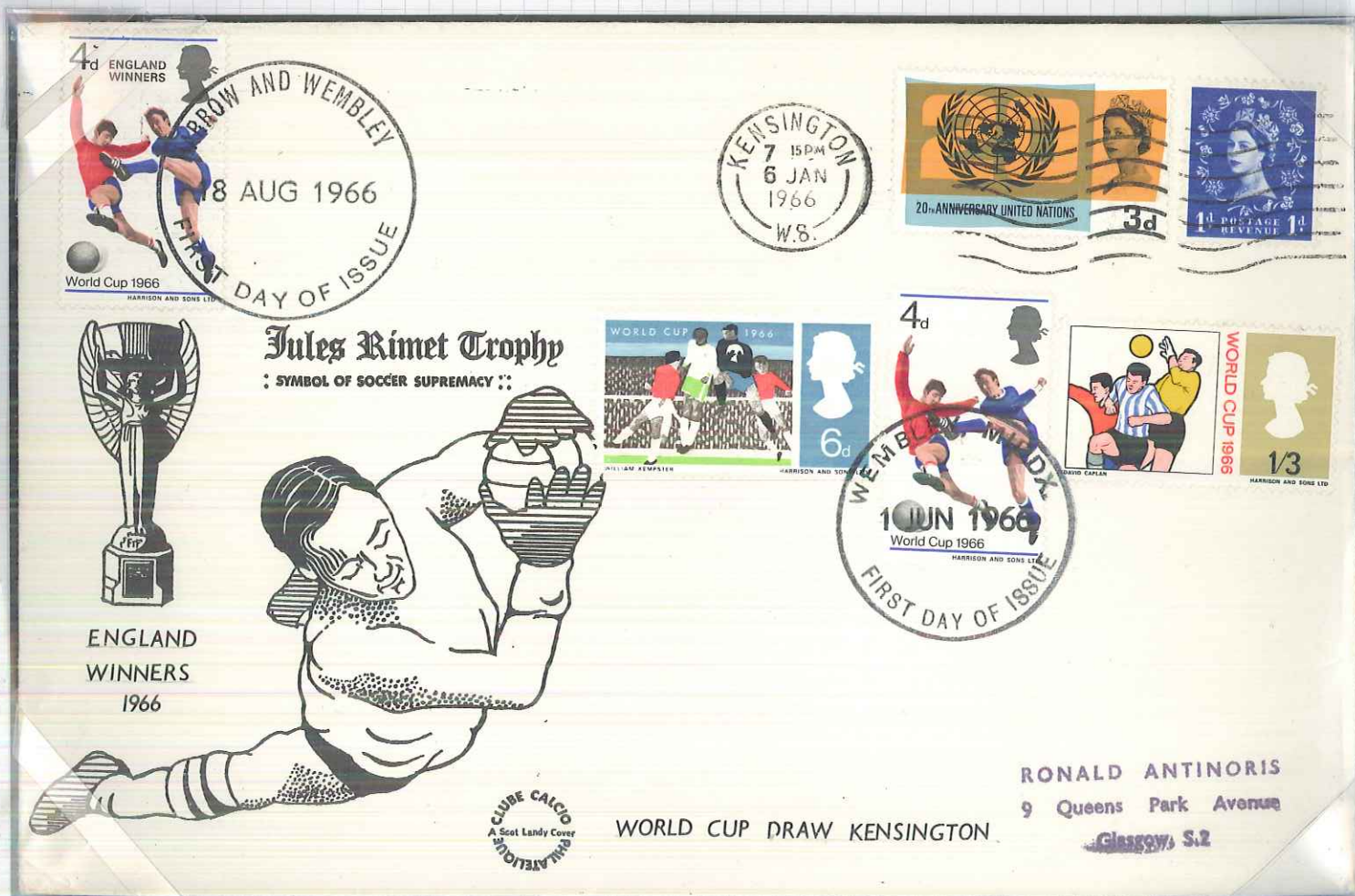
6 - 1 - 66

Publicity Stamps

1 - 6 - 66

England Winners

18 - 8 - 66



England



World Cup 1966

Special Commemorative Issue

Official Draw

FIRST DAY COVER

6.1.66



John Murray Esq.,
84 Keal Avenue,
Glasgow, W.5
SCOTLAND

Stanley Rous

Stanley Rous

THURSDAY 6th JANUARY 1966
OFFICIAL DRAW FOR 1966 FINALS
BY SIR STANLEY ROUS CBE JP: PRESIDENT of FIFA
ROYAL GARDEN HOTEL — LONDON



*The President and Members
of
The Federation Internationale de Football Association
and
The Football Association
World Cup Organising Committee
request the pleasure of the company of*

*to witness the Official Draw for the
World Championship Jules Rimet Cup, 1966,
in the Palace Suite, Royal Garden Hotel, Kensington,
London, W.8. at 6.30 p.m. on 6th January, 1966.*

*R. S. V. P.
Chief Administrative Officer
World Cup Organisation,
White City, London, W.12.*

WILL GUESTS PLEASE BE SEATED BY 6.15 P.M.

*Light refreshments
will be served after
the Draw.*

England

8th World Cup

England

11th-30th July

1966

—



Official Draw

Kensington - London

6th January

1966

—

"World Cup Emblem"

Group I

England

France

Mexico

Uruguay

—

Group II

Argentina

Spain

Switzerland

West Germany

—

Group III

Brasil

Bulgaria

Hungary

Portugal

—

Group IV

Chile

Italy

North Korea

Russia

—

Cover for the Official Draw



World Cup

Special Commemorative Issue

OFFICIAL DRAW

FIRST DAY COVER

6:1:66



Group - 1

ENGLAND

FRANCE

MEXICO

URUGUAY

Group - 2

ARGENTINE

SPAIN

SWITZERLAND

WEST GERMANY

Group - 3

BRAZIL

BULGARIA

HUNGARY

PORTUGAL

Group - 4

CHILE

ITALY

NORTH KOREA

RUSSIA

England

8th World Cup
England
1966

OFFICIAL EMBLEM
and
WORLD CUP DRAW

6-1-66



WORLD CUP WILLIE

8th World Cup
England
1966

OFFICIAL EMBLEM
and
WORLD CUP DRAW

6-1-66



World Cup

Special Commemorative Issue

OFFICIAL DRAW

FIRST DAY COVER

6:1:66



Group - 1

ENGLAND
FRANCE
MEXICO
URUGUAY

Group - 3

BRAZIL
BULGARIA
HUNGARY
PORTUGAL

Group - 2

ARGENTINE
SPAIN
SWITZERLAND
WEST GERMANY

Group - 4

CHILE
ITALY
NORTH KOREA
RUSSIA

Spain

England

World Cup

England

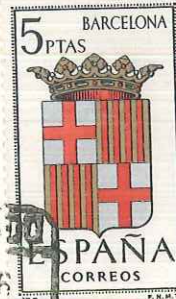
Selection of the Referees for the 1966 World Cup Finals by F.I.F.A.'s Committee.

Barcelona

19/20 : 2 : 66



-1966-
World Cup
Referee
Special Commemorative Issue
Selection
FIRST DAY COVER



R-225
7

Stanley Law

Mr. John Murray,

84 Keal Avenue,

Glasgow, W.5

INGLATERRA

SCOTLAND

- 1966 -
World Cup

Referee - Selection

Barcelona



20:2:66



BARCELONA
NOM. 557

CERTIFICADO
S 20 FEB 66
BARCELONA

Mr. JOHN MURRAY
84 Keal Avenue
GLASGOW, W.5 SCOTLAND
INGLATERRA



STAMPEX
CENTRAL HALL
WESTMINSTER
1966



STAMPEX 1966 MARCH 18th-26th CENTRAL HALL WESTMINSTER

BRITAIN'S NATIONAL
STAMP EXHIBITION
18-26 MARCH 1966



WORLD FOOTBALL CUP
WEMBLEY-ENGLAND
JULY 1966



England

National Stamp Exhibition

1966

Unofficial Souvenir Sheet

STAMPEX
1966

STAMPEX
1966



Combination cover with exhibition sheet and the original World Cup Stamps



RONALD ANTONORIS
9 Queens Park Avenue
Glasgow, S.2



England

World Cup Stolen

"STAMPEX"

- 1966 -

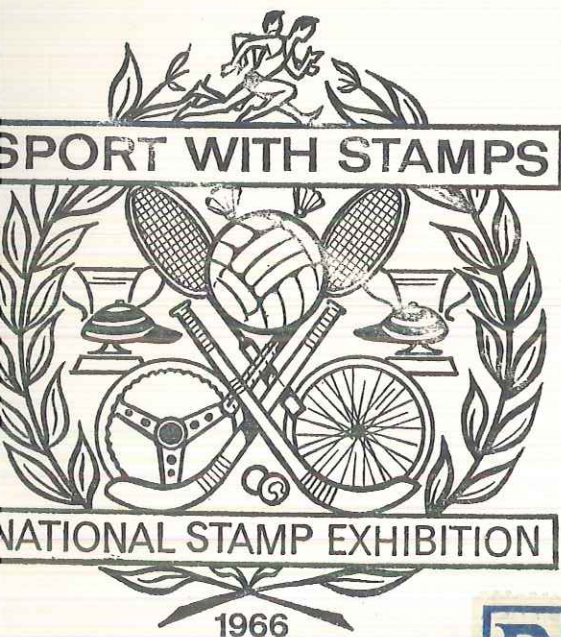
Central Hall

- LONDON -

Sunday

20 - 3 - 66

The famous trophy was stolen on the only day
the exhibition was closed to the public



Dr. M. Sutcliffe,
Crosby Hall,
Cheyne Walk,
Chelsea.
London SW3.

R LONDON, S.W. 126
No 7688

1966 - England - 8th World Cup - England - 1966
 (London) Central Halls - STAMPEX - Central Halls (London)

WORLD CUP STOLEN

F.I.F.A.'s Gold Cup was stolen while the Halls were closed

THE NATIONAL STAMP EXHIBITION 13-21 MARCH 1959



UNADOPTED
DESIGN A



UNADOPTED
DESIGN B



UNADOPTED
DESIGN C



*Issued
in commemoration
of Stampex 1959
at Central Hall,
Westminster, London, S.W.1*



PRINTED WITH THE PERMISSION OF THE UNITED NATIONS POSTAL ADMINISTRATION
 HARRISON AND SONS LIMITED



FIRST DAY
OF
ISSUE



BRITAIN'S NATIONAL STAMP EXHIBITION 18-26 MARCH 1966



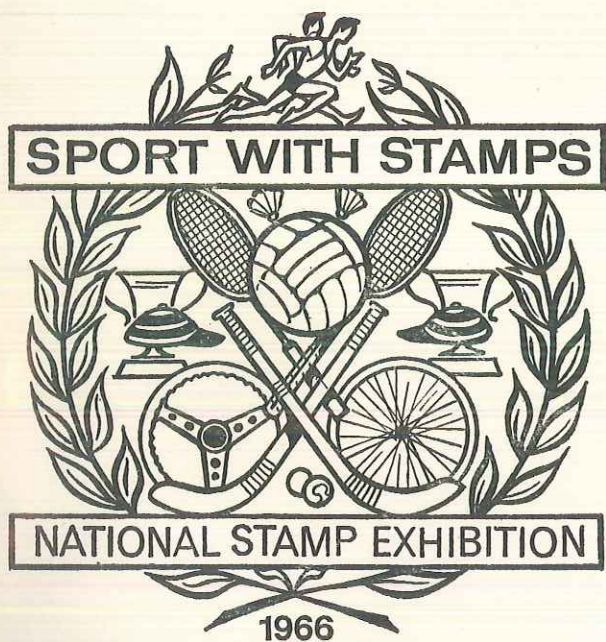
WORLD FOOTBALL CUP
 WEMBLEY·ENGLAND
 JULY 1966

STAMPEX

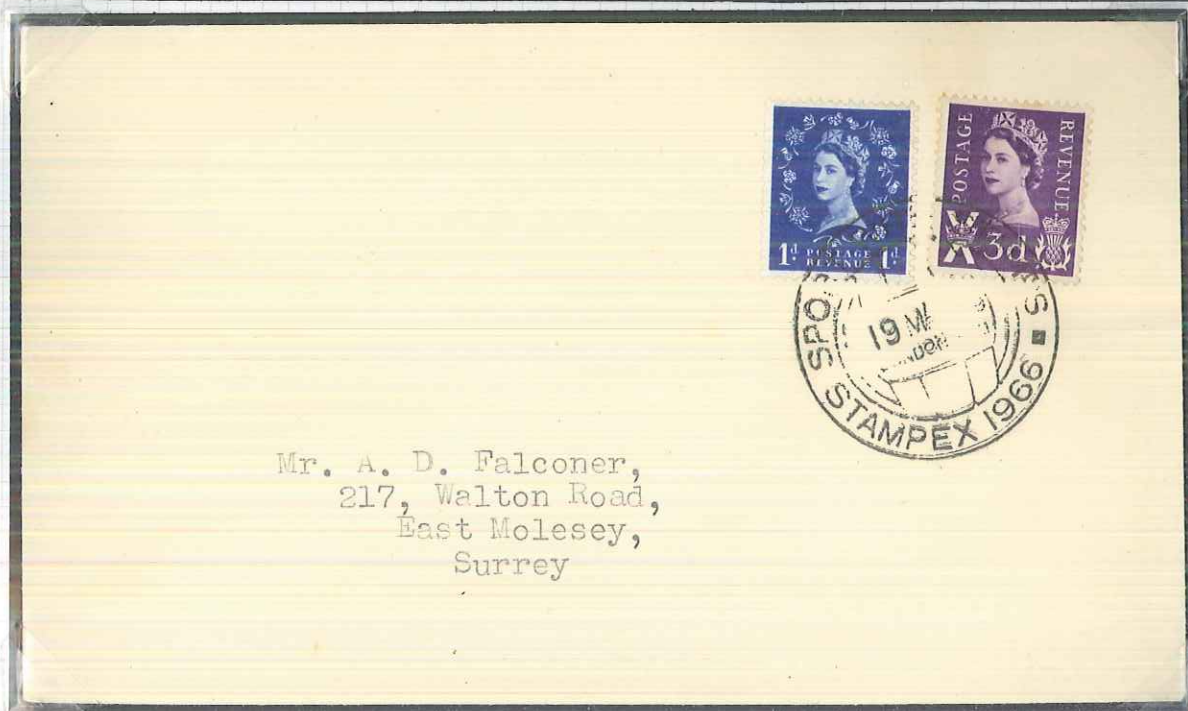
1966

18-26 MARCH 1966

The World Cup was stolen from Exhibition display case



MR. A. H. RICHARDSON
C/O 16 BULSWICK ROAD
THORNTON HEATH
SURREY, ENGLAND



Mr. A. D. Falconer,
217, Walton Road,
East Molesey,
Surrey



Mr J Jamieson
14 Bertram Street
Shawlands
Glasgow. S. 1.
Scotland

STAMPEX

8-3-66 - 26-3-66



W.G. Mustard,
39 Caldercuilt Road,
GLASGOW N.W.



"Exhibition Postmark"

Mr. J. A. Wood,
67, Albury Road,
ABERDEEN.

England

'STAMPEX'

1966

London

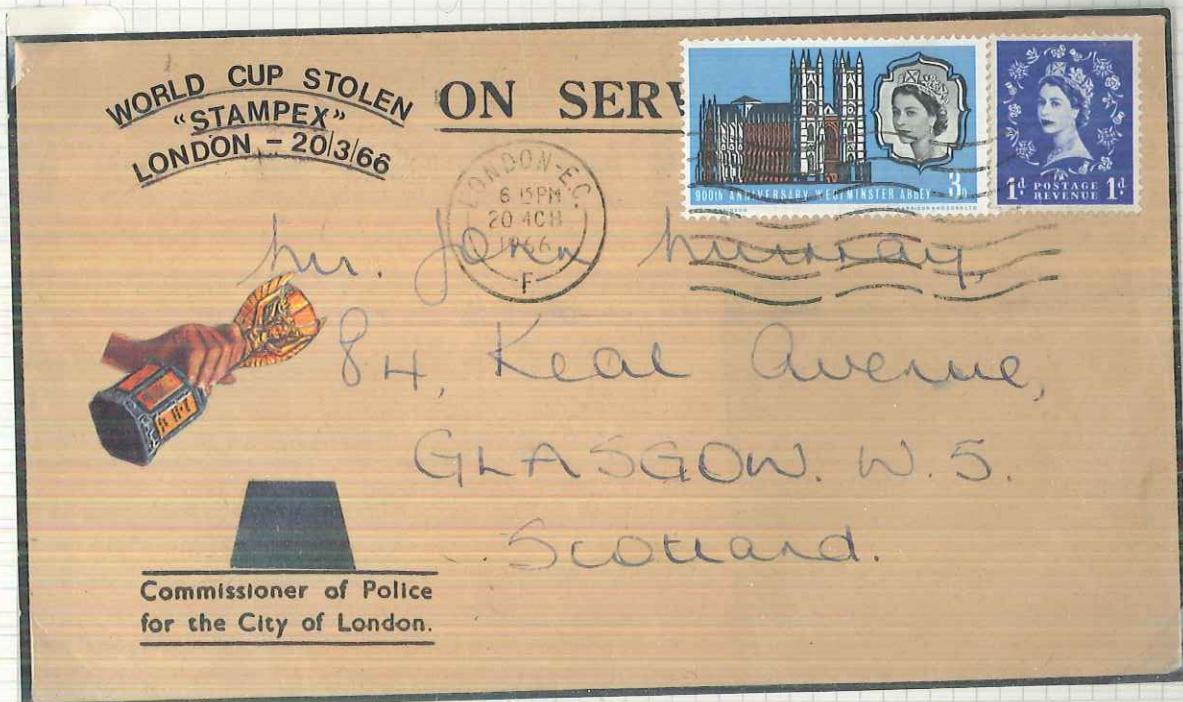
WORLD CUP STOLEN

WORLD CUP STOLEN



Sunday — 20th March

Cover posted in London on the day the World Cup was stolen.



THE NATIONAL STAMP EXHIBITION 13-21 MARCH 1959



UNADOPTED
DESIGN A



UNADOPTED
DESIGN B



UNADOPTED
DESIGN C



*Issued
in commemoration
of Stampex 1959
at Central Hall,
Westminster, London, S.W.1*



PRINTED WITH THE PERMISSION OF THE UNITED NATIONS POSTAL ADMINISTRATION
HARRISON AND SONS LIMITED

DATE CUP STOLEN

POLICE DATE OF THEFT
20-3-1966

CITY OF LONDON
POLICE CONTROL

1966 III 20

16:26

England

8th World Cup

England

1966

STAMPEX - LONDON



"WORLD CUP STOLEN"

Central Halls

Westminster

20 - 3 - 66

ON SERV



Mr. John Murray

84, Keal Ave.

GLASGOW. W.5.

Scotland.

CMF



Please address any reply to
THE UNDER SECRETARY
OF STATE

quoting: P.201533/1

Your reference:

Sir,

I am directed by the Secretary of State to refer to your letter of 5th September, addressed to the Governor of Lewes prison, in which you request that the enclosed envelopes be autographed by prisoner Edward Betchley.

The Secretary of State has carefully considered your request but in all the circumstances of the case very much regrets that he does not feel able to accede to it.

I am, Sir,
Your obedient Servant,

Mr. J. Murray
84 Keal Avenue
GLASGOW W.5
Scotland

HOME OFFICE

Romney House, Marsham Street, LONDON S.W.1

Telex: 24986

Telephone: SULLIVAN 3488, ext.

21st September, 1966.

"EDWARD WALTER BLETCHLEY"

Correspondence application to HM Prison Lewes

Telephone Lewes 4124

Ext. No.

Please address any reply to

THE GOVERNOR

and quote

Your ref.



H.M. Prison,
Brighton Road,
LEWES,
Sussex.

22nd September, 1966.

Dear Sir,

re; Edward Walter Bletchley.

Thank you for your letter concerning the above named and also the envelopes that were forwarded from H.M. Prison, Wandsworth.

The envelopes together with your request have been forwarded for consideration to the Prison Department of the Home Office from whom you will no doubt be hearing within the next few days.

Yours faithfully,

Governor.

J. Murray Esq.,
84, Keal Avenue,
Glasgow W.5.



■ The Jules Rimet Trophy stands 1 ft. high and weighs 9 lb. It is solid gold. Earlier this year it was removed from a London exhibition and "recovered" in a South London garden when "Pickles," a black and white mongrel dog, left his master to pick over a parcel wrapped in old newspapers . . . and there it was!

Italy, having won the Cup in 1938, kept possession of it throughout the war years. German troops tried to find it while occupying that country, but the President of the Italian F.A., Dr. Ottorino Barassi, kept it safe . . . under his bed.

■ The only nation to have taken part in the final stages of all eight competitions (including this year's) is Brazil. France, Italy, Hungary, Mexico and Switzerland have now reached the final stages six times. Portugal and North Korea are in the last 16 for the first time.

■ Mexican goalkeeper, Antonio Carbajal, a member of his country's proposed squad, will set up a record never likely to be equalled. He comes to England for his fifth World Cup.

England, as host country, pay all travelling and living expenses of the organising committees, teams and referees. They take 25 per cent of the net profit, 10 per cent goes to FIFA and the rest is divided among the competing countries according to the number of games played.

■ The individual goal-scoring record for the final rounds is held by Frenchman Just Fontaine. He scored 13 goals in the

What all about

it's

The World Cup is the world's greatest sporting trophy. We have introduced you to the nations. Here we tell you how the tournament is run.



This is "Pickles." He's a South Londoner, and he found the World Cup in a local garden, after it had been "removed" from an exhibition.

1958 series in Sweden. The leading scorers:

- 13—Fontaine (France) 1958.
- 11—Kocsis (Hungary) 1954.
- 8—Stabile (Argentina) 1930, Leonidas (Brazil) 1938.
- 7—Zsengeller (Hungary), Ademir (Brazil) 1950.
- 6—Morlock (W. Germany) 1954, Pele (Brazil) 1958, Rahn (W. Germany) 1958.

WORLD CUP REFEREES: Argentina—Roberto Goicoechea; Brazil—Armando Marques; Bulgaria—Dimitar Rountentchev; Chile—Claudio Vicuna; Czechoslovakia—Dr. Karel Galva; England—Bill Clements, Ernie Crawford, Ken Dagnall, Jim Finney, Kevin Howley, George McCabe, Jack Taylor; France—Pierre Schwinte; Hungary—Istvan Zsolt; Israel—Menachem Askenazy; Italy—Concetto Lobello; Mexico—Buegro Elcuaz; Ireland—John Adair; N. Korea—Choi Duk Ryong; Peru—Arturo Yamazaki; Portugal—Joaquim Fernandes Campos; Russia—Tofik Bakhramov; Scotland—Hugh Phillips; Spain—Juan Gardeazabal; Sweden—Bertil Loow; Switzerland—Gottfried Dienst; United Arab Republic—Aly Kandyl; Uruguay—Jose Maria Codesal; Wales—Leo Callaghan; West Germany—Rudolf Kreitlein; Yugoslavia—Konstantin Kesgavic.

THE GROUPS—If teams finish the groups level on points, goal-average decides. If the goal-average is equal, the winners shall be decided by lot.

QUARTER-FINALS AND SEMI-FINALS—If matches in the quarter-finals and semi-finals are drawn after 90 minutes, an extra 15 minutes each will be played. If it is still a draw after extra-time, the winners will be determined by lot.

FINAL—If the final ends in a draw after 15 minutes each way extra time will be played. If, after the extra time, the result is still a draw, a final replay will take place, with extra time, if necessary. If the result in the final replay remains a draw, the winner shall be determined by lot.

THE GROUNDS—**GROUP 1:** Empire Stadium, Wembley. Capacity—97,000 (capacity reduced to accommodate extra equipment) all under cover. Seats—45,000. White City Stadium, Shepherd's Bush: Capacity—60,000; cover for 50,000. Seats—10,000.

GROUP 2: Hillsborough, Sheffield. Capacity—65,000, cover for 32,000. Seats—24,000. Villa Park, Birmingham: Capacity—54,000, cover for 35,000. Seats—18,000.

GROUP 3: Goodison Park, Liverpool. Capacity—65,000, cover for 45,000. Seats—18,000. Old Trafford, Manchester: Capacity—64,000, cover for 52,000. Seats—18,340.

GROUP 4: Roker Park, Sunderland. Capacity—63,000, cover for 25,000. Seats—14,870. Ayresome Park, Middlesbrough: Capacity—46,000, cover for 21,000. Seats—13,800.



WORLD TALK

A round up of news and views from correspondents throughout the world

The World Cup arrives at the Central Hall, Westminster (above), and 11-year-old stamp collector Kenneth Tonkin gets a sneak preview. But two days later the Cup is gone and the cupboard is bare





8th World Cup

England

1966

—

1966 STAMPEX 1966

Central Halls Westminster



(The Exhibition site where World Cup was stolen)

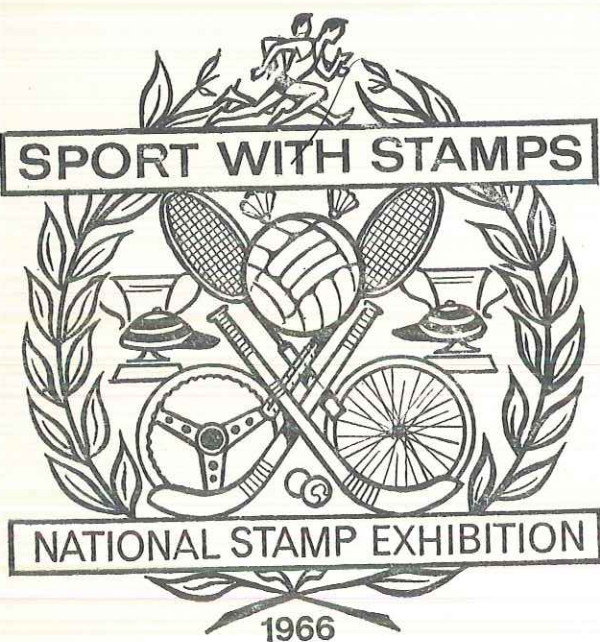
—

ENGLAND WINNERS

18-8-66

—

Used on 1966 STAMPEX Stationery



*Wm. Jones Ltd,
159 West Nile St.,
GLASGOW C.I.*

England

8th World Cup

England

1966

PUBLICITY BOOKLET

Issued by the Organising Committee the English FA.

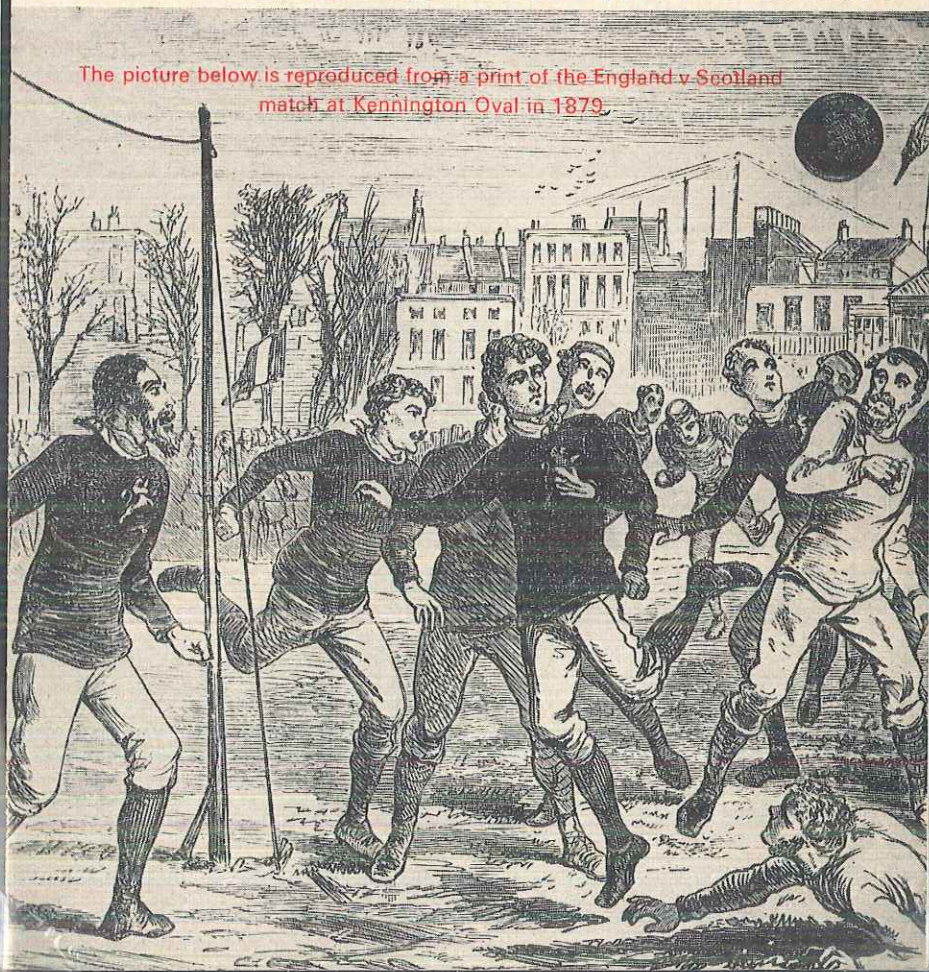
WORLD CUP 1966



ENGLAND

information

The picture below is reproduced from a print of the England v Scotland match at Kennington Oval in 1879.



8th World Cup

England

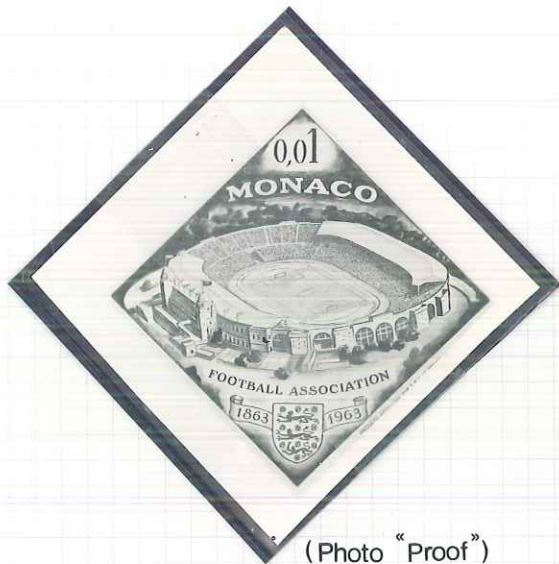
1966

WEMBLEY STADIUM

1st Postage stamp

MONACO

1963

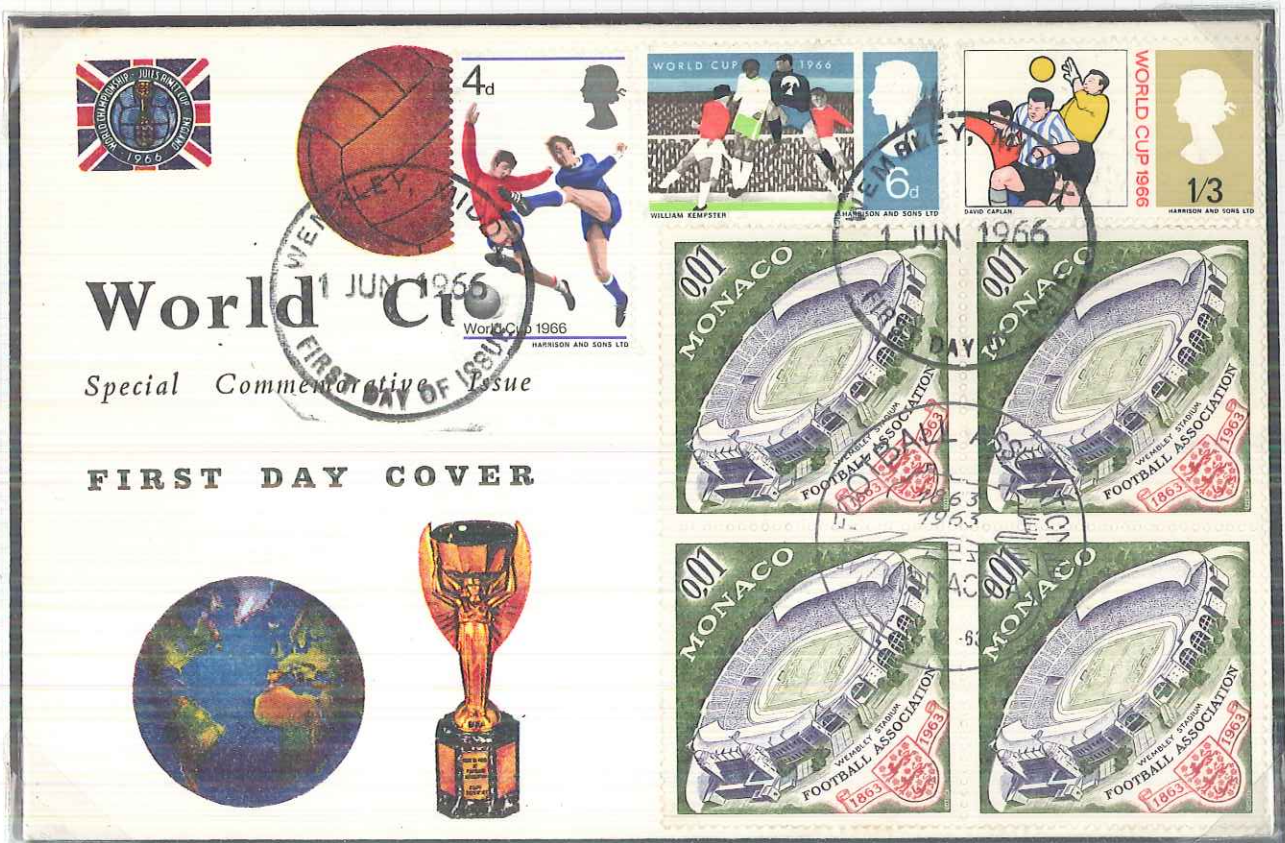


(Photo "Proof")



(Postal issue)

First Day "Block" dual cancelled with 1966 Issue



England

8th World Cup
England
1966

"Pitney-Bowes"

Publicity meter slogan

World Cup Meter Mark Slogan

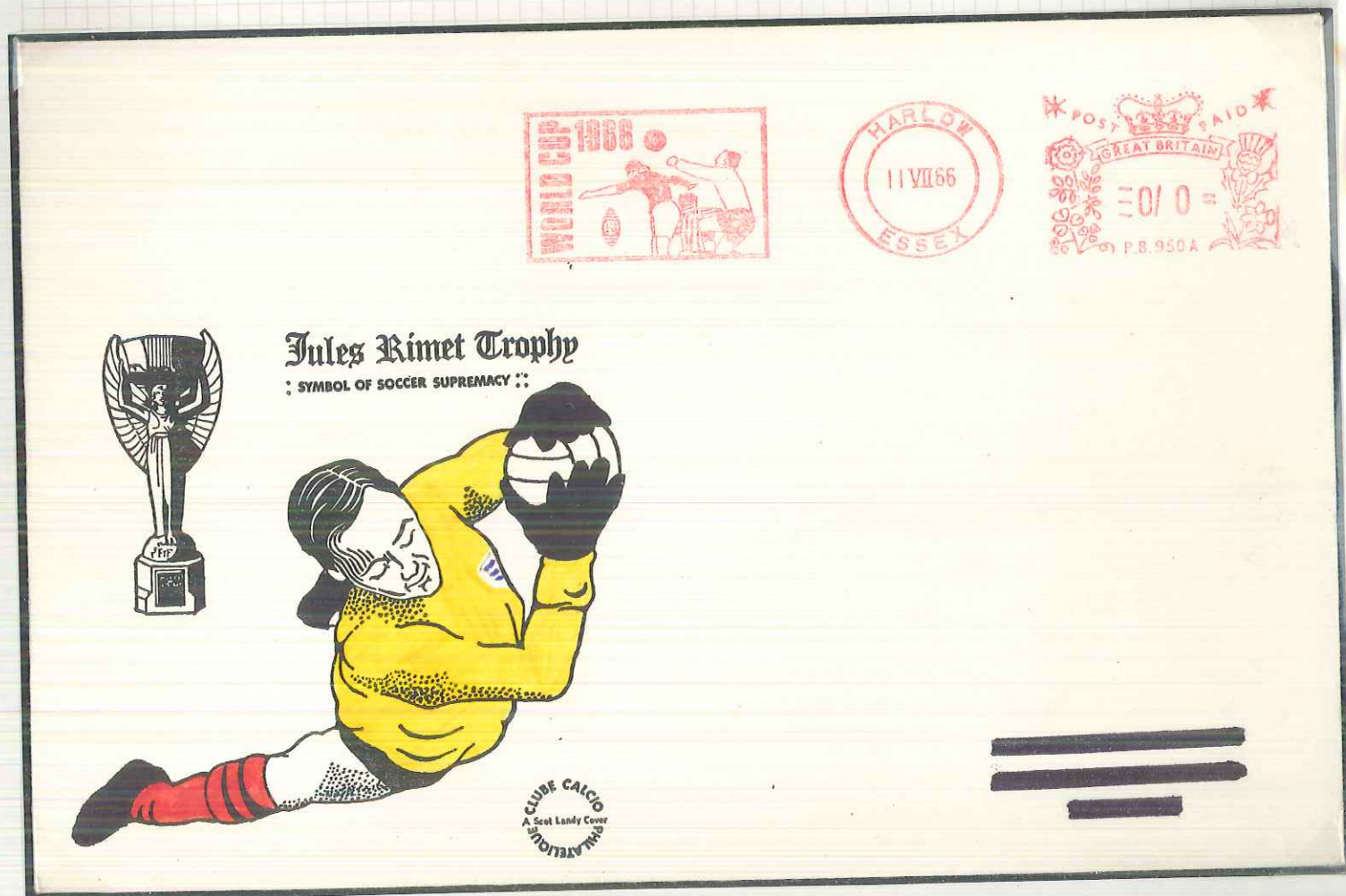
Pitney-Bowes, the originators of the postage meters, have obtained permission to use a special slogan during June and July which reads "World Cup 1966" in a rectangular frame and shows three players in action. (Incorporated in the design is also a miniature version of the oval "PB" trade mark which, in this version, looks rather like a rugby ball.) Various slogan dies are available to fit all types of franking machines and can be used also by any firm that wishes to associate itself with the World Cup. (Similar slogans were issued during the Shakespeare Year 1964, and for last year's Churchill Appeal.)

Readers of STAMP COLLECTING may obtain, free of charge, a special picture card direct from the factory, franked with the slogan meter and addressed; applications should be sent on postcard to Mr. J. K. Tottrup, Pitney-Bowes, Ltd., Harlow, Essex.



"Stamp Collecting"

Philatelic Notice



England

8th World Cup
England
1966

"PITNEY-BOWES"
Meter Mark

POST CARD

Please do not write directly below.

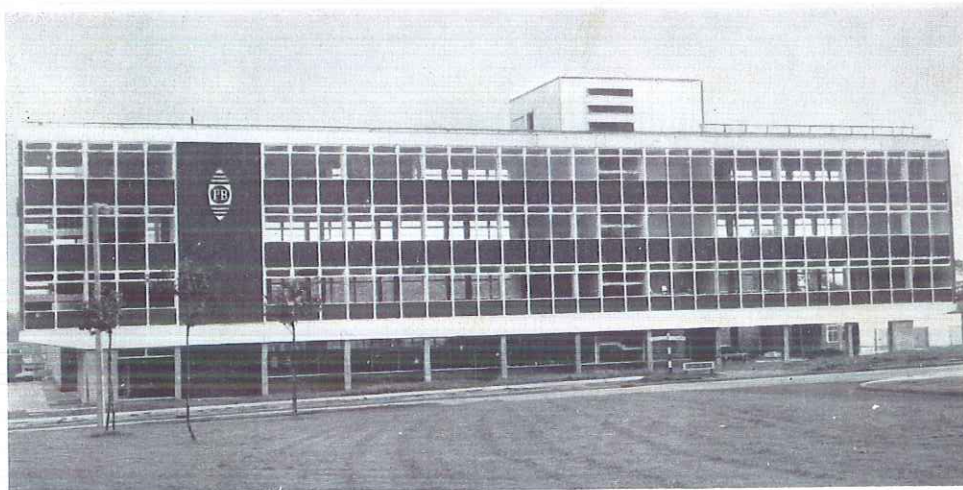


For Greeting

For Address Only

With compliments.

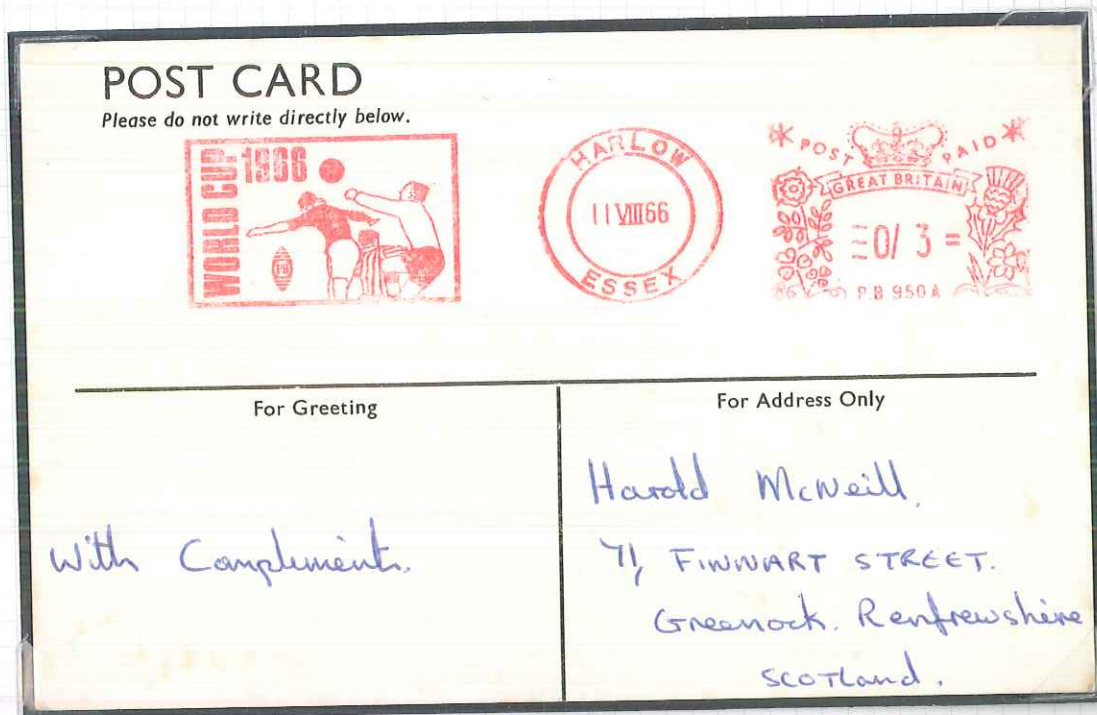
Pres: Bath Philatelic Society
137, Wellsway,
BATH, Somerset



Pitney - Bowes Ltd., Harlow, Essex.

Originator of the postage meter machine. Manufacturer of mailing and business machines.

8th World Cup
England
1966
"PITNEY - BOWES"
Meter Mark



8th World Cup
1966 - England - 1966

The Pitney-Bowes publicity cancel

POST CARD

Please do not write directly below.



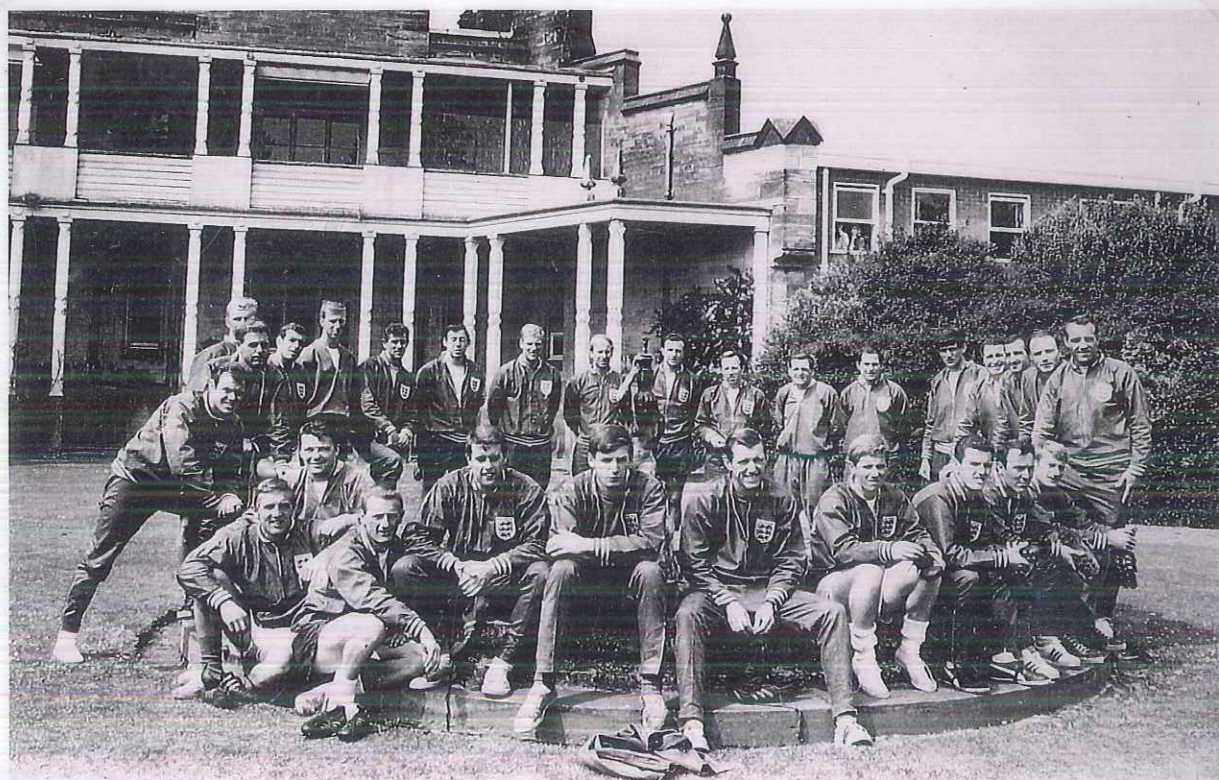
For Greeting

With Compliments

For Address Only

D. Wedgerfield.
Mannequin.
The Woodlands
Combe - Martin
Devon.

ENGLAND



FIRST DAY COVER

ENGLAND v SCOTLAND MATCH IN 1879



OFFICIAL
PHILATELIC
COVER

19



66



World Cup
1966

John Flanigan, Esq., M.B. Ch.B.,
40, Blenheim Street



World Cup

Special Commemorative Issue

FIRST DAY COVER



World Cup

Special Commemorative Issue

FIRST DAY COVER



Medical
Mail



Abraham I. Silverman Esq., M.B. B.S.,
142, Camden Road,
LONDON, N.W.1.

England



Jules Rimet Trophy
: SYMBOL OF SOCCER SUPREMACY :



CLUBE CALCIO
A Scot Landy Cover



RONALD ANTINORIS
9 Queens Park Avenue
Glasgow, S.2



Jules Rimet Trophy
: SYMBOL OF SOCCER SUPREMACY :



CLUBE CALCIO
A Scot Landy Cover



RONALD ANTINORIS
9 Queens Park Avenue
Glasgow, S.2



J. Murray,
84 Keal Ave.



World Cup

Special Commemorative Issue
- Sheffield -
FIRST DAY COVER

John Murray Esq.,
84 Keal Avenue,



World Cup

Special Commemorative Issue
- Sunderland -
FIRST DAY COVER

John Murray Esq.,
84 Keal Avenue,
Glasgow, W.5.
SCOTLAND



POST

CARD



I had a very
 comfortable journey
 & I will enjoy it all
 Lowlands - some tough
 duck -
 My best love
 Denis

Heston House Nursery Home

22 Reigate Road,
 Worthing
 Sussex

Printed & Published by J. Salmon Ltd., Sevenoaks, Kent

POST

CARD



WORLD CUP
 SHEFFIELD
 CITY OF STEEL



HAROLD McNEILL,
 71 FINNART STREET,
 GREENOCK,
 RENFREWSHIRE
 SCOTLAND.

WORLD CUP SUNDERLAND
 COMPETITION JULY 13-23

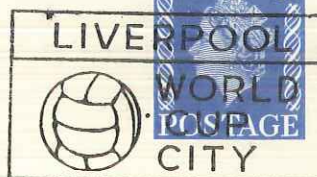


RONALD ANTINORIS
 9 Queens Park Avenue
 Glasgow, S.2

LETTER



CARD



4d



WORLD
POSTAGE
CITY

LETTER



CARD

WORLD C
SHEFF
CITY OF



4d

HAROLD McNEILL,
71 FINNART STREET,
GREENOCK,
RENFREWSHIRE
SCOTL

POST



WORLD CUP SUNDERLAND

CON. ITION JULY 13-23



3d

HAROLD McNEILL,
71 FINNART STREET,
GREENOCK,
RENFREWSHIRE,
SCOTLAND.

1st Day Issue

8th World Cup

England

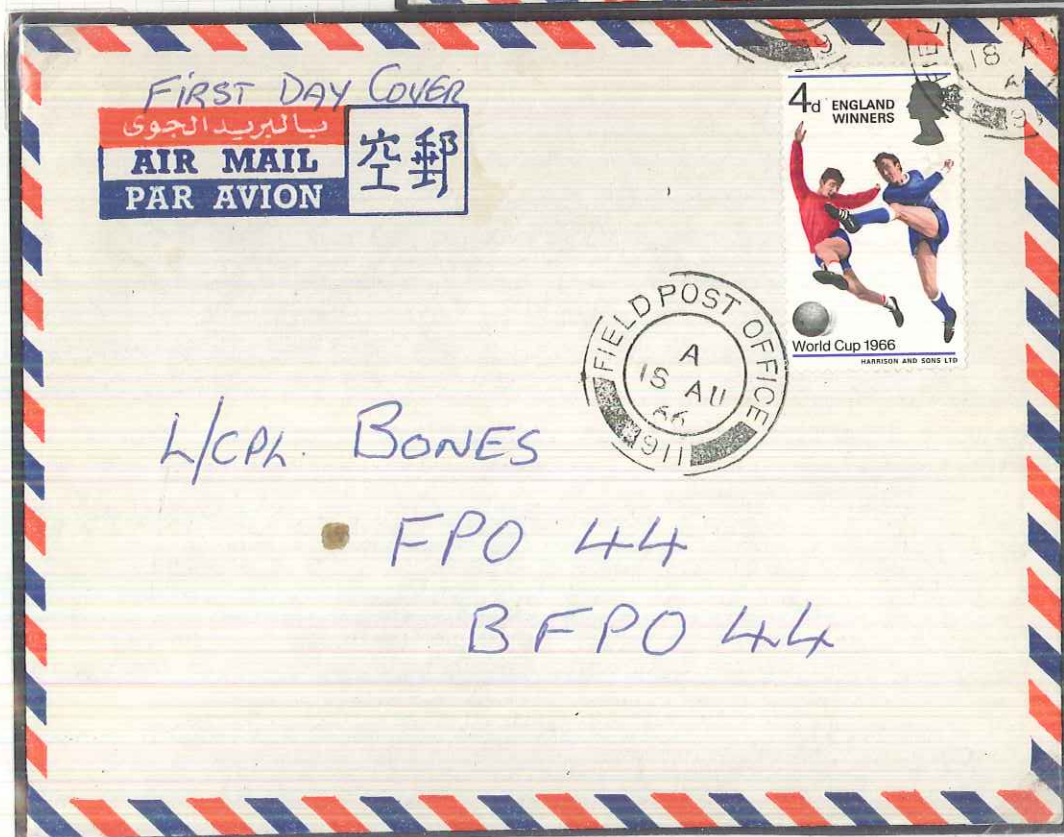
1966

ARMED FORCES MAIL

Publicity issue.

1-6-66

F.P.O. 867



Winners issue

18-8-66

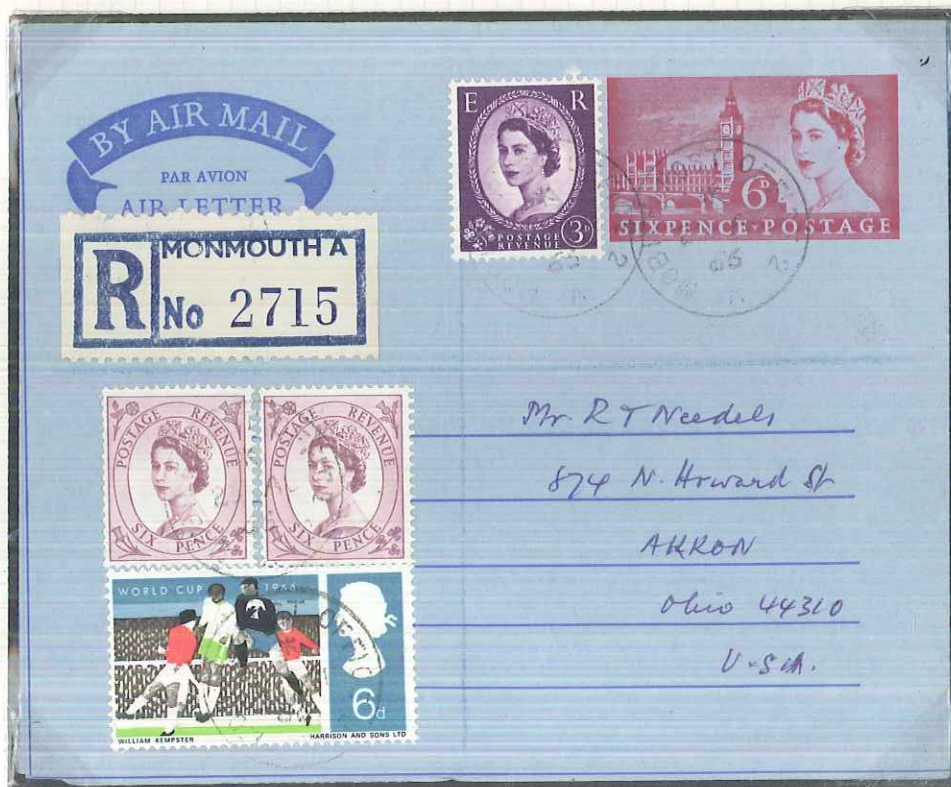
F.P.O. 911

8th World Cup
England
1966

AIR LETTER

MOBILE POST OFFICE
"MONMOUTH A"

Use 6d value



Monmouth — Akron-USA

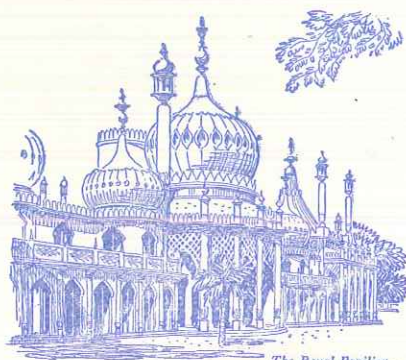
2-8-66

England

8th World Cup
England
1966

Philatelic conventions

48th PHILATELIC CONGRESS OF GREAT BRITAIN



The Royal Pavilion.

BRIGHTON: 14-17 JUNE, 1966

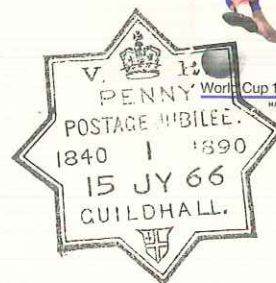


Mr J. Thompson
4 Rus holme Drive
Tarsley
Pudsey
Yorks.

'BRIGHTON'

'LONDON'

D. Ayles, Esq.,
44, Orchard Close,
Fetcham,
LEATHERHEAD,
Surrey.



England

8th World Cup

England

1-6-66

1-6-66

1966

World Cup or Local Derby...

CHYMORAL

scores in the
medicine of sport



Medical mail with insert

FIRST DAY COVER

ENGLAND - SCOTLAND MATCH IN 1879



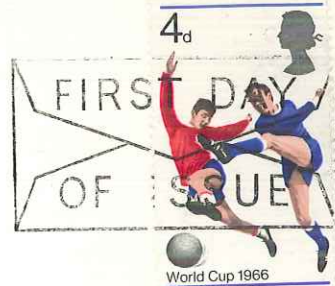
OFFICIAL
PUBLICATION

19



66

**WORLD
FOOTBALL
CUP**
COMMEMORATIVE
STAMPS



World Cup 1966

HARRISON AND SONS LTD

Abraham I. Silverman Esq., M.B. B.S.,
142, Camden Road,
LONDON, N.W.1.

8th World Cup
 1966 - England - 1966
 1-6-66 - "GLASGOW CANCELLATIONS" - 1-6-66



18-8-66 - ENGLAND WINNERS - 18-8-66



England

8th World Cup

11th - 30th July

1966



"Wembley Stadium"

Group I

—
England

France

Mexico

Uruguay





JULES RIMET CUP WORLD CHAMPIONSHIP ENGLAND 1966 JULY 11-30

WEMBLEY · EVERTON · SHEFFIELD · SUNDERLAND · ASTON VILLA · MANCHESTER · MIDDLESBROUGH · WHITE CITY



OFFICIAL SOUVENIR PROGRAMME

PRICE 2/6

England

8th World Cup

England

11th-30th July

1966

"ENGLAND"

Official F.A. Booklet



Armfield - J.
Ball - A.
Banks - G.
Bonetti - P.
Byrne - R.
Callaghan - J.

WORLD CUP COMPETITION ENGLAND 1966



Players, Officials and Trainer



Charlton - J.
Charlton - R.
Cohen - G.
Connelly - J.
Eastham - G.
Flowers - R.



Greaves - J.
Hunt - R.
Hunter - N.
Hurst - G.
Moore - R.
Alfred Ramsey
- Manager -



Paine - T.
Peters - M.
Springett - R.
Stiles - N.
Wilson - R.
H. Shepherdson
- Trainer -



England

8th World Cup

England

11th-30th July

1966

1 : 6 : 66



Commercial First Day Cover

— Edward's —

1 : 6 : 66

England

8th World Cup

England

1966

"WEMBLEY"



1 - 6 - 66

World Cup Grounds **WEMBLEY**

● Full Address — Empire Stadium, Wembley, Middlesex.
Record Attendance—126,047 in 1923 Cup Final, Bolton v. West Ham.
Record Receipts—£89,000 (twice), Manchester United v. Leicester City in 1963 Cup Final, England v. Rest of World 1963.
Official Capacity for World Cup—97,000.

WORLD CUP MATCHES

England v. Uruguay	July 11.
Kick-off—7.30 p.m.	
France v. Mexico	July 13.
Kick-off—7.30 p.m.	
Mexico v. England	July 16.
Kick-off—7.30 p.m.	
Mexico v. Uruguay	July 19.
Kick-off—4.30 p.m.	
France v. England	July 20.
Kick-off—7.30 p.m.	
Quarter-Final	July 23.
Kick-off—3 p.m.	
Semi-Final	July 26.
Kick-off—7.30 p.m.	
Play-Off for Third Place	July 28.
Kick-off—7.30 p.m.	
Final	July 30. Kick-off—3 p.m.

An aerial photograph of Wembley Stadium, showing its distinctive twin towers and the surrounding urban landscape.

England

8th World Cup

England

1966

"WHITE CITY"

FIRST DAY OF ISSUE WORLD FOOTBALL CHAMPIONSHIP



ENGLAND 1966

White City Stadium LONDON



John Murray Esq.,
84 Keal Avenue,
Glasgow, W.5.

1 - 6 - 66

World Cup Grounds WHITE CITY

● Full Address — White City
Stadium, Wood Lane,
Shepherd's Bush, London,
W.12.
Capacity for World Cup —
60,000.

WORLD CUP MATCHES
Uruguay v. France—July 15.
Kick-off—7.30 p.m.

The White City Stadium is the
only ground in the World
Cup which is not owned by
a Football League club.



England

8th World Cup

England

1966

AYRESOME PARK

WORLD FOOTBALL CHAMPIONSHIP



ENGLAND 1966

Ayresome Park MIDDLESBROUGH



John Murray Esq.,
84 Keal Avenue,
Glasgow, W.5.

1 - 6 - 66

World Cup Grounds AYRESOME PARK

● Full Address—Ayresome Park,
Middlesbrough. Telephone,
Middlesbrough 89659.

Club—Middlesbrough F.C.

Record Attendance—53,596 v.
Newcastle, League Match,
December 27, 1949.

Record Receipts—£8342 v.
Sunderland, League Match,
October 26, 1963.

Official Capacity for World
Cup—40,000.

Extra seating and improve-
ments for the World Cup
games have reduced the
capacity.

WORLD CUP MATCHES

Russia v. North Korea—July 12.
Kick-off—7.30 p.m.

North Korea v. Chile—July 15.
Kick-off—7.30 p.m.

Italy v. North Korea—July 19.
Kick-off—7.30 p.m.



England

8th World Cup

England

1966

"VILLA PARK"

WORLD FOOTBALL CHAMPIONSHIP



ENGLAND 1966

Roker Park SUNDERLAND



John Murray Esq.,
84 Keal Avenue,
Glasgow, W.5.

1 - 6 - 66

Full Address—Roker Park, Sunderland.
Club—Sunderland F.C. Telephone Sunderland 72077.
Record Attendance—75,118 v. Derby County, Cup Match, March 8, 1933.
Record Receipts—£14,519 England v. Wales International Match, November 15, 1950.
Official Capacity for World Cup—63,000.

WORLD CUP MATCHES

Chile v. Italy—July 13. Kick-off—7.30 p.m.
Italy v. Russia—July 16. Kick-off—3 p.m.
Chile v. Russia—July 20. Kick-off—7.30 p.m.
Quarter-Final—July 23. Kick-off—3 p.m.

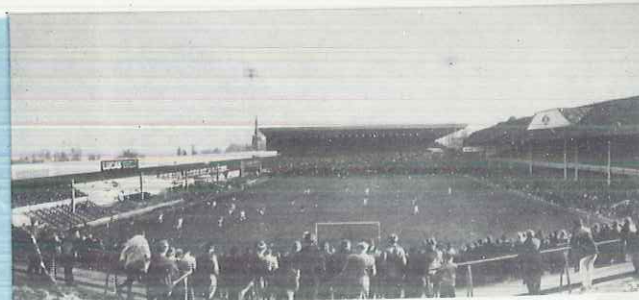


ROKER PARK World Cup Grounds VILLA PARK

Full Address—Villa Park, Birmingham, 6.
Telephone, Birmingham East 1646.
Club—Aston Villa F.C.
Record Attendance—76,588 v. Derby County, Cup Match, February 2, 1946.
Record Receipts—£28,686 Manchester United v. Southampton, Cup Semi-Final, April 27, 1963.
Official Capacity for World Cup—72,000.

WORLD CUP MATCHES

Spain v. Argentina—July 13. Kick-off—7.30 p.m.
Argentina v. West Germany—July 16. Kick-off—3 p.m.
Spain v. West Germany—July 20. Kick-off—7.30 p.m.



England

8th World Cup

England

1966

"ROKER PARK"

FIRST DAY OF ISSUE WORLD FOOTBALL- CHAMPIONSHIP



ENGLAND 1966

Villa Park BIRMINGHAM



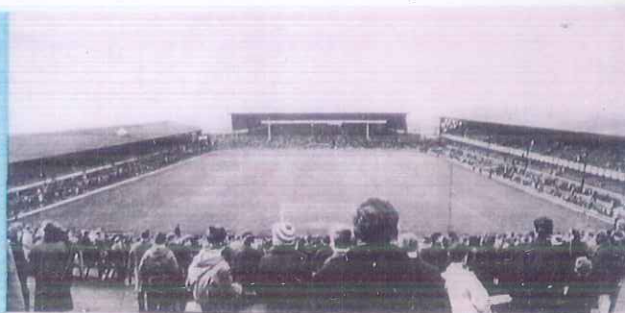
John Murray Esq.,
84 Keal Avenue,
Glasgow, W.5.

1 - 6 - 66

Full Address—Roker Park, Sunderland.
Club—Sunderland F.C. Telephone Sunderland 72077.
Record Attendance—75,118 v. Derby County, Cup Match, March 8, 1933.
Record Receipts—£14,519 England v. Wales International Match, November 15, 1950.
Official Capacity for World Cup—63,000.

WORLD CUP MATCHES

Chile v. Italy—July 13. Kick-off—7.30 p.m.
Italy v. Russia—July 16. Kick-off—3 p.m.
Chile v. Russia—July 20. Kick-off—7.30 p.m.
Quarter-Final—July 23. Kick-off—3 p.m.

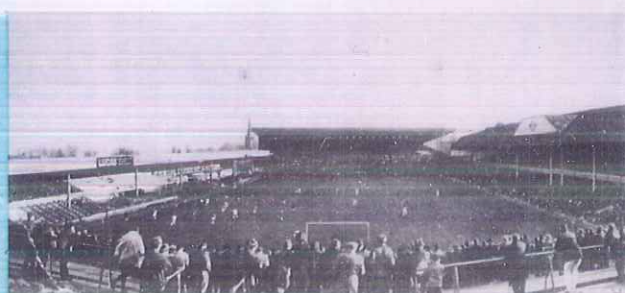


ROKER PARK World Cup Grounds VILLA PARK

Full Address—Villa Park, Birmingham, 6.
Telephone, Birmingham East 1646.
Club—Aston Villa F.C.
Record Attendance—76,588 v. Derby County, Cup Match, February 2, 1946.
Record Receipts—£28,686 Manchester United v. Southampton, Cup Semi-Final, April 27, 1963.
Official Capacity for World Cup—72,000.

WORLD CUP MATCHES

Spain v. Argentina—July 13. Kick-off—7.30 p.m.
Argentina v. West Germany—July 16. Kick-off—3 p.m.
Spain v. West Germany—July 20. Kick-off—7.30 p.m.



England

8th World Cup

England

1966

"HILLSBOROUGH"

WORLD FOOTBALL CHAMPIONSHIP



ENGLAND 1966

Hillsborough SHEFFIELD



John Murray Esq.,
84 Keal Avenue,
Glasgow, W.5.

1 - 6 - 66

World Cup Grounds HILLSBOROUGH

- Full Address — Hillsborough, Sheffield, 6. Telephone, Sheffield 343357.
- Club—Sheffield Wednesday F.C.
- Record Attendance—72,841 v. Manchester City, Cup Match, February 17, 1934.
- Record Receipts—£32,680 Liverpool v. Leicester City Cup Semi-Final, April 27, 1963.
- Official Capacity for World Cup —65,000.

WORLD CUP MATCHES
West Germany v. Switzerland—
July 12. Kick-off—7.30 p.m.
Switzerland v. Spain—July 15.
Kick-off—7.30 p.m.
Argentina v. Switzerland—
July 19. Kick-off—7.30 p.m.
Quarter-Final—July 23.
Kick-off—3 p.m.



England

8th World Cup

England

1966

"GOODISON PARK"

FIRST DAY OF ISSUE WORLD FOOTBALL CHAMPIONSHIP



ENGLAND 1966

Goodison Park LIVERPOOL



John Murray Esq.,
84 Keal Avenue,
Glasgow, W.5.

1 - 6 - 66

World Cup Grounds GOODISON PARK

- Full Address—Goodison Park, Liverpool, 4. Telephone, Aintree 5263-4.
- Club—Everton F.C.
- Record Attendance—78,299 v. Liverpool, League Match, September 18, 1948.
- Record Receipts—£31,709 v. Inter Milan, European Cup Match, September 18, 1963.
- Official Capacity for World Cup—66,000.

- WORLD CUP MATCHES**
- Bulgaria v. Brazil—July 12.
Kick-off—7.30 p.m.
 - Brazil v. Hungary—July 15.
Kick-off—7.30 p.m.
 - Portugal v. Brazil—July 19.
Kick-off—7.30 p.m.
 - Quarter-Final—July 23.
Kick-off—3 p.m.
 - Semi-Final—July 25.
Kick-off—7.30 p.m.



England

8th World Cup

England

1966

"OLD TRAFFORD"

FIRST DAY OF ISSUE WORLD FOOTBALL CHAMPIONSHIP



ENGLAND 1966
Old Trafford MANCHESTER



John Murray,
84 Keal Avenue,
Glasgow, W.5.

1-6-66

World Cup Grounds OLD TRAFFORD

- Full Address — Old Trafford, Manchester, 16. Telephone, Trafford Park 1661-2.
- Club—Manchester United F.C.
- Record Attendance — 76,962, Wolves v. Grimsby Town, Cup Match March 25, 1939.
- Record Receipts — £23,097 v. Sporting Lisbon, Cup-Winners' Cup Match, February 26, 1964.
- Official Capacity for World Cup — 64,000.

WORLD CUP MATCHES
Hungary v. Portugal—July 13.
Kick-off—7.30 p.m.
Portugal v. Bulgaria—July 16.
Kick-off—3 p.m.
Hungary v. Bulgaria—July 20.
Kick-off—7.30 p.m.

