

CONSTANTINOPLE

30 PARAS

TYPE 1

TYPE 2

EK2 18 AU 21

Green

005 025



B 12 NO 21



12 22

Yellow Green



A 12 SP 21



C 0000



CONSTANTINOPLE

1/2 PIASTRES

EKD 9 AU 21

TYPE 1

TYPE 2

Deep Scarlet

from Q21. pl 11



1 cover

18 AU 21

Scarlet

B 75 P 21

B 75 P 21



B 23 OC 21

B 23 OC 21

B 23 OC 21

Scarlet Vermilion

Type 2 cover

from T22i pl 91



A -2 MY 23

C 31 AU 23

Vermilion



B 17 MR 23

B 17 MR 23

Carmine Red



A 14 JU 23

A 14 JU 23



CONSTANTINOPLE

3 3/4 PIASTRES

EKD 16 AU 21

TYPE 1

TYPE 2

Deep Blue

from Q211 plate 76



C 17 NO 21

leaves

18 AU 21

C 17 NO 21

Dull Blue

from R21p pl 11a



B 28 JA 22



C 11 AU 23

Dull Prussian Blue

from R21p pl 11a



C 5 OC 22



C 10 SE 23

toned

Bright Blue



- SP 22

Bright Blue

A 31 JA 23

C 11 SE 23



A 31 JA 23



CONSTANTINOPLE

4 1/2 PIASTRES

EKD 16 AU 21

TYPE 1

Lavender Violet

from Q21c pl 6a



A 7 OCT 22

Dull Violet

from R21c pl 7a



A 21 FE 22



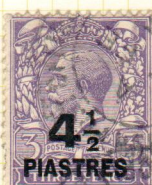
A 11 MY 22

Bluish Violet

from S22c pl 8a



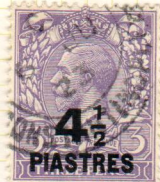
A 31 23



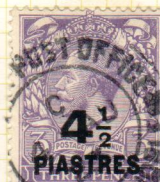
A 11 SP 23

Very Deep Violet

from S22p pl 11



C 6 JU 23



C 4 AU 23

Very Deep Violet

S22p



CONSTANTINOPLE

7 1/2 PIASTRES  
EKD 4 AU 21  
Brown  
from R21i pl 1a



Paler Brown  
from R21i pl 1a



Dull Brown  
from N 19p pl 1c



Grayer Brown Shades:-  
Pale Dull  
from S21i pl 2c



from S22i pl 2c



Deep  
from T22p pl 3





CONSTANTINOPLE

15 PIASTRES

EKD 24 AU 21

TYPE 1

TYPE 2



Turquoise (Greenish)



G 22 OCT 21, A 21 3 18 MY 22

P.O. CONSTANTINOPLE

Turquoise



A 26 FE 22

C 5 7 26

Deep Turquoise



M 3 10 23 M 5 10 23

type 2  
ajurkin  
Lomas



CONSTANTINOPLE

1921 Surcharges Miscellaneous Cancels  
 no dot 25 1/2 mm (used as a receiving mark) :



23 JU 23 8 1/2 mm 23

PAQUE BOT

See vol 32



Paucel Cancellatur BRIT. P.O. CONST'PLE in black or purple



Also 90p 180p



Also 90p 180p



CONSTANTINOPLE

18 <sup>3</sup>/<sub>4</sub> PIASTRES

EKD 27 AU 21

TYPE 1

TYPE 2

Bisque brown shades

from R21 p 5c

VINTA

C 27 AU 21



C 10 JA 22

Olive bisque

from R21 p 3



C 22 KA 22



A 10 JA 22



CONSTANTINOPLE

Code letter M



9 MR 23

all  
Type  
1



20 OCT 22



13 JU 23



15 FE 23

48 pi 180 pi  
3/23 5/11  
Code letter A

Type 2 cancel  
1 cover 4 2A 23  
30 pa 15 pi 32 pi 4 1/2 pi  
x4

cancel 3

Type 1  
with T2  
cancel



6 MR 23



CONSTANTINOPLE

Circular date stamps

Blue /  
Green

NO 21

Chocolate Brown / 0

Yellow  
Red

C

NO 21



2/3 or 7/4

2/4 L no ems

3 or 7/4

19 NO 21

Blue

NO 22 4/1

NO 22 1/1

X 6 or 9/2

B

NO 22

d

NO 23 X 22

NO 23 X 22



CONSTANTINOPLE 1921

90 pi /5s

Ribbed paper – used







CONSTANTINOPLÉ

M  
code 8 MR 22

Double Circle



5 MR 22

27 AV 23

late use

Parcels

BRIT. P.O.

- in black



27 AV 23

Direct cancels

- in purple



BRIT. P.O.

BRIT. P.O.

BRITISH POST OFFICE  
CONSTANTINOPLÉ

Straight line cancel  
(= Telegraph)



Circular cancellation no date stamp



usually found  
in post  
orig. eBay

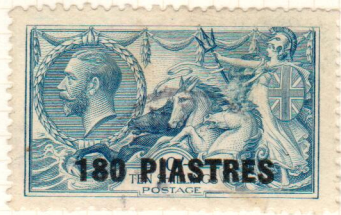


CONSTANTINOPLE

Parcel Cancellations



DROPPED S  
(in next row)



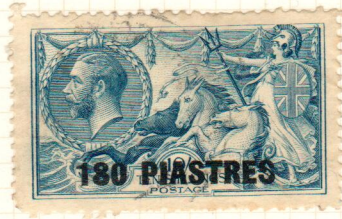
BRIT. P.O.



BRIT. P.O.



CONSTANTINOPLE



Dark Shade

↑ Flaw in S

Double circle c.d.s.



DROPPED S  
(4 vert. lines)

M

NO 22

Single circle c.d.s.

newer COS 2.23

Registration Use



at m  
normal  
equally

Straight line cancel

8

my 28



For use  
with no d.s.  
COS 2.23

Paris Cancel

newer c.d.s. with no d.s.