







Plate
3



RH
(inv wmk)



*Plate 3[RH] - Fine 4-margined, inverted watermark - cat £600.00.
Cancelled 693 of Scarborough. £ 245*

WWW.MYPENNYBLACKS.COM PO BOX 1315 EL SEGUNDO CA 90245-6315 USA

Plate
3



DI
Cork MX



*Plate 3 [DI] - 4 margins, cancelled by a classic strike of the scarce Cork
Special MX (see Rockoff and Jackson pp 61-2) Spec E1uk. Cat £ 1500.
With a clear and detailed 2012 Michael Jackson certificate. £ 525*

WWW.MYPENNYBLACKS.COM PO BOX 1315 EL SEGUNDO CA 90245-6315 USA



PHILATELIC OPINION
MIKE JACKSON
PHILATELIST

No. 00008

22 February 2012

3 COTTESMORE AVENUE MELTON MOWBRAY LEICESTERSHIRE LE13 0HY ENGLAND
mike@mjpublications.com

ITEM SUBMITTED AS:

1841 2d DI cancelled by a Cork Special Maltese Cross.

OBSERVATIONS

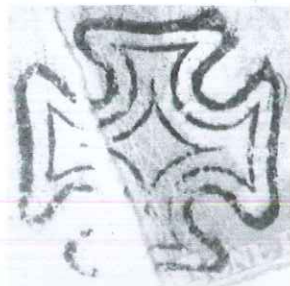
Examination of the stamp under long- and short-wave UV light (366 nm and 254 nm respectively) revealed nothing unusual. The shapes of the components of the Maltese Cross are consistent with those of Cork Special strikes from dated covers, two of which are shown for comparison. Although this particular strike is difficult to differentiate from the Ross Special, what can be seen of the diamond, the outer cross loops, and the gaps between the diamond and inner cross (the gaps are smaller in the Ross Special) indicate that it is a Cork Special obliterator. Cork is known to have sometimes produced blotchy impressions such as that on the questioned stamp. The only other Special cross with which Cork can be confused is Belfast; images of Belfast and Ross are shown for comparison.

See the *Encyclopaedia of the Maltese Cross*, Vol. 1, p. 47 (Belfast); p. 82 (Cork); Vol. 2, pp. 236–237 (Ross); Vol. 3, p. 371 (Belfast Addendum).

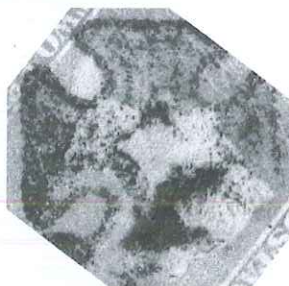
CONCLUSION

In my opinion the stamp in question is 2d Plate 3, DI, and bears a genuine Cork Special Maltese Cross cancellation.

Mike Jackson
MIKE JACKSON



*Cork Special from cover dated
25 September 1843*



QUESTIONED ITEM



*Cork Special from cover dated
24 February 1844*



Belfast Special



Ross Special