

## The Postcards of Tonga.

The Tongan postal authorities issued three sets of ten different postcards for public use, the first being issued in 1906. Initially issued at 2/6 per set of 10, the price was reduced to 1/- per set in 1907.

The stamp design is that of the 1d definitive, issued in 1897, the 'ovava tree. The design on the address side is the same for all cards, showing a view of Nukualofa and a coconut tree. All pictures are multicoloured. As was usual practice at the time, no message was allowed on the address side.

Specimen cards are occasionally seen. This is a card of a Pine-apple plantation.

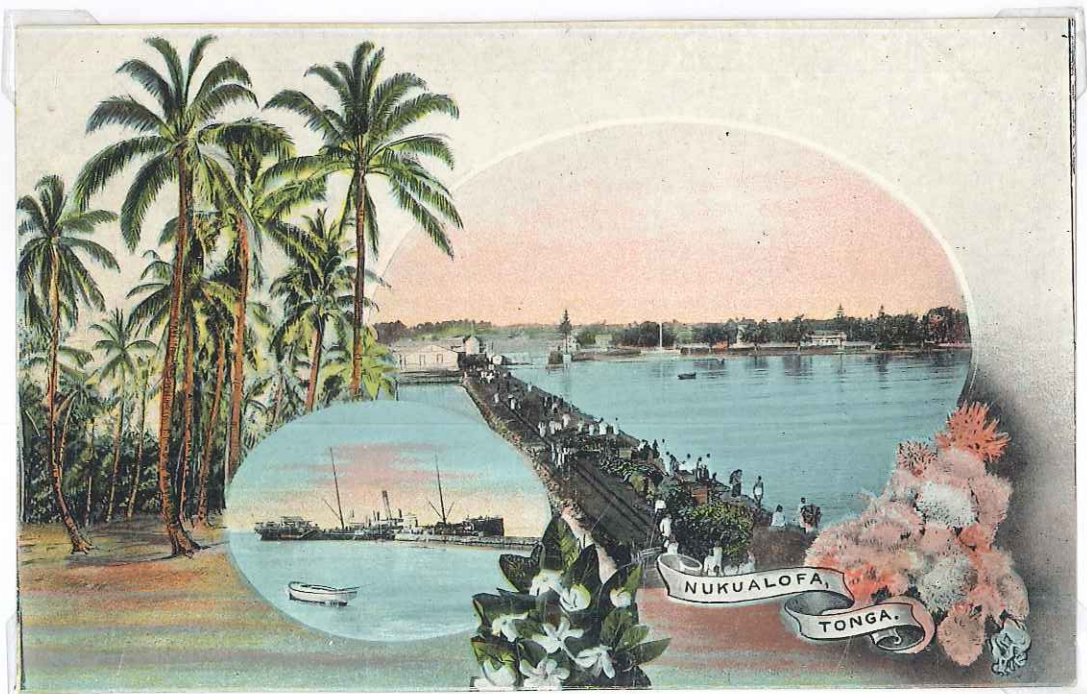


# The Postcards of Tonga.

Card No. 1 shows a single view of Nukualofa. The sender has marked the position of the steamer wharf with an "x" and of the King's palace with an "o". It was posted on August 6<sup>th</sup>, 1910 at Nukualofa.



A pair of views of Nukualofa in mint condition.



# The Postcards of Tonga.

This card of "A Native Village, Tonga" is postmarked by a Vavau double circle for June 2<sup>nd</sup>, 1908, and addressed to Queensland, Australia.



A card of "The Blowholes of Houma", posted at Haapai on 28<sup>th</sup> October, 1910 with a Nukualofa transit cancel.



# The Postcards of Tonga.

Posted at Vavau on 28<sup>th</sup> August, 1906 this card also carries an s/c transit mark of Nukualofa.

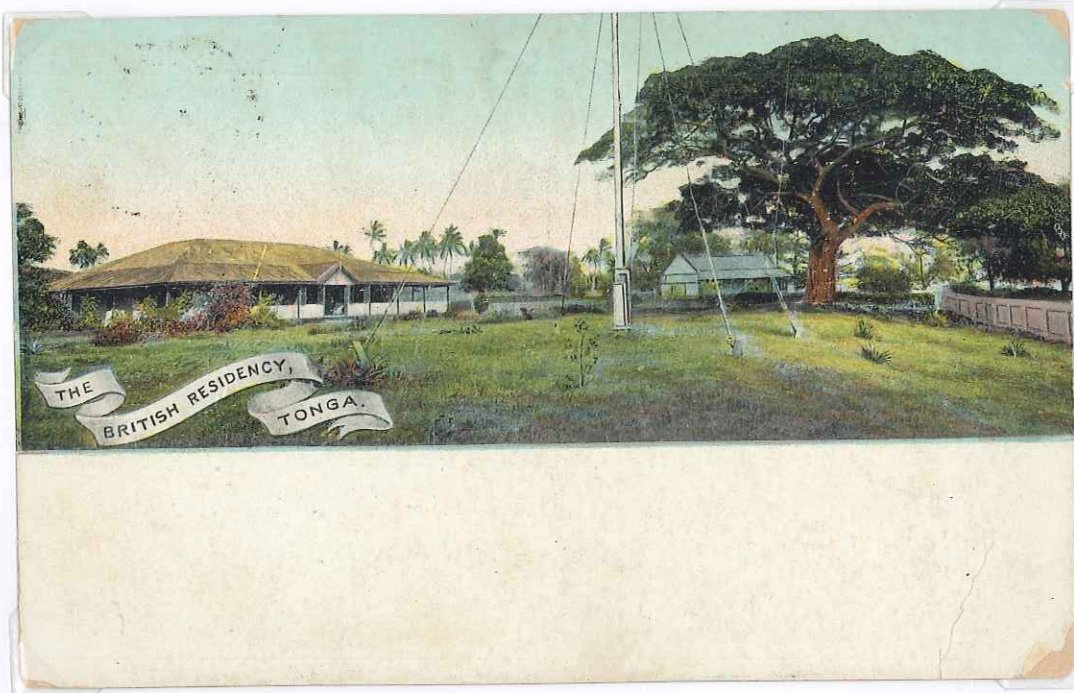


Very late usage of a card to the USA – posted at Nukualofa in September, 1931.

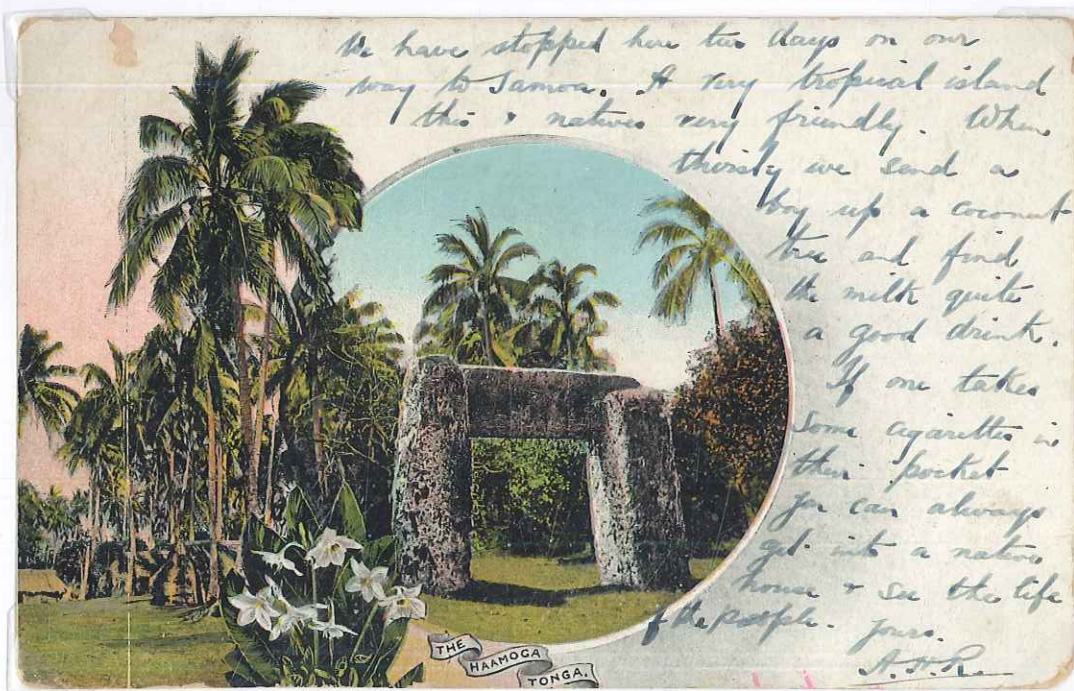


## The Postcards of Tonga.

Used in October, 1908 at Nukualofa, this is a card showing "The British Residency".



This card shows a prehistoric Trilithon, known as "The Ha'amonga". Although no-one really knows its' purpose, it is thought to be a help to navigation by the stars. It was used in 1908.



## The Postcards of Tonga.

A postcard of "The Orange Groves of Tonga", written in German, with 3 postal marks, and addressed to Fiji where it arrived on 20 JA 1908.



A postcard of "Tufumahina" Tonga, postmarked on July 7<sup>th</sup>, 1909 at Nukualofa and addressed to France.



### The Postcards of Tonga.

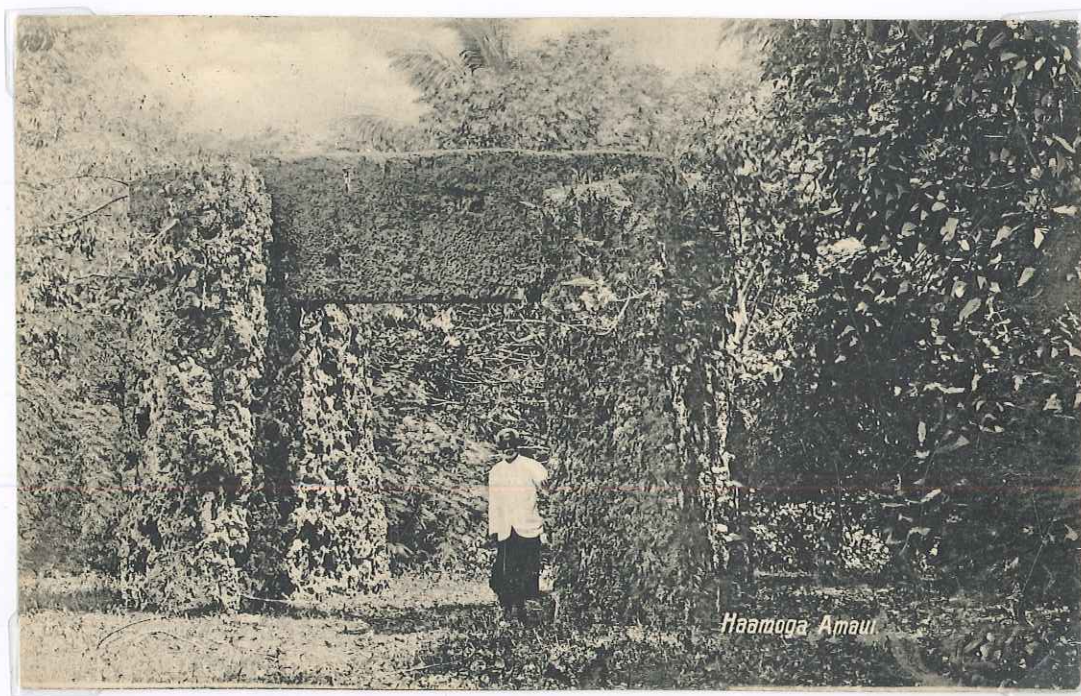
The second and third series of postcards were issued in 1911. They both had a portrait of King George II Tubou in an oval design inscribed "TOGA ONE PENNY" and "PENI E TAHA" twice. The second series of cards had images in black and white on white card, whilst the third were sepia in appearance. Both were sold for 1/- for a set of 10. Both of these sets are more difficult to obtain than the first, presumably because fewer were printed. Specimens and used cards are less often seen than mint cards.

This is a specimen of a card of the second set.



The Postcards of Tonga.

This is a mint card of "Ha'amonga, Amaui". There are no trees in the vicinity, these days.



## The Postcards of Tonga.

Postmarks of Nukualofa and Suva for November, 1916 and a cachet of "G. O. TRAGORDH/Tonga/FRIENDLY ISLANDS" on a card of "Flying Foxes, Hihifo", addressed to California, together with a mint example.



Flying Foxes, Hihifo

## The Postcards of Tonga.

"Presentation of Kava" – the local drink of fermented roots. At that time it was prepared by chewing the root, which had the effect of producing small particles, making for higher potency. It tastes peppery and causes relaxing effects and numbness. This used card is postmarked in Vavau on 6<sup>th</sup> May, 1915.



Presentation of Kava

The palace was made in New Zealand and transported to Tonga, where it was erected in 1867. It has not been used for some years, but was recently renovated. This card was sent to Switzerland in 1921.



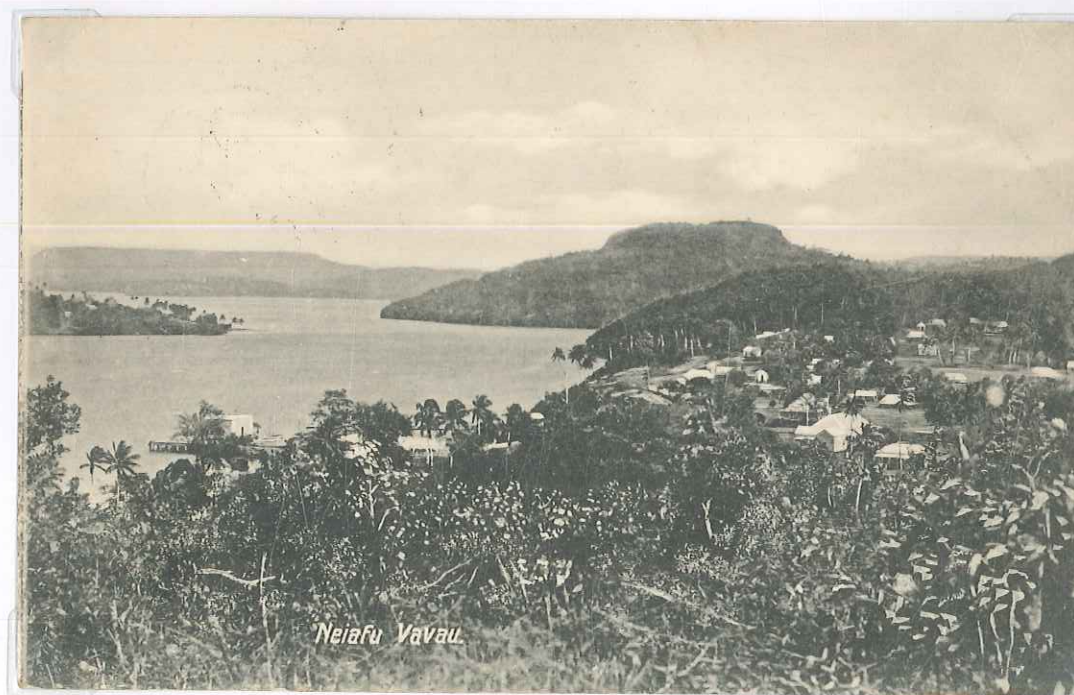
The Palace and Chapel, Nukualofa.

The Postcards of Tonga.

The beautiful harbour of Vavau is one of the largest in the world.



Neiafu is the administrative capital of Vavau. This card was posted to Tasmania in 1912.



The Postcards of Tonga.

The Swallow Caves can only be accessed by sea and are the home of many thousands of birds.



### The Postcards of Tonga.

Written to wish her friend "Happy Christmas", the sender of this card would, no doubt, be annoyed that it received a 3<sup>rd</sup> of January cancellation! Coconuts are important exports from Tonga.



The Postcards of Tonga.

A "Three-headed cocoanut" must be a rare occurrence. This is another specimen card.



Three Headed Cocoanut

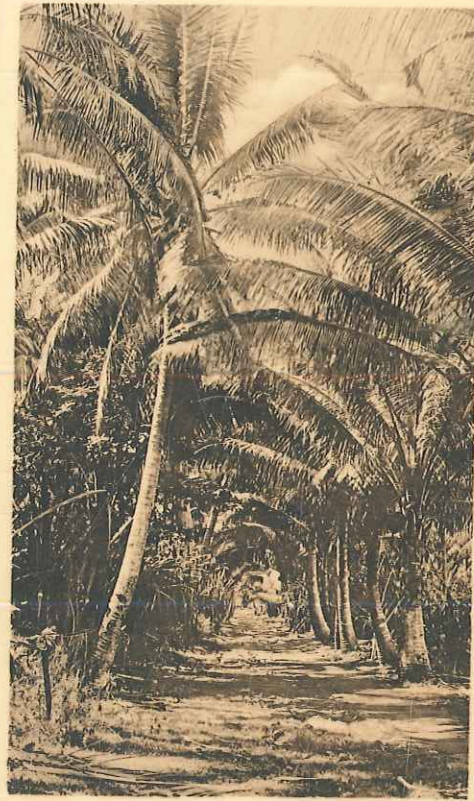
### The Postcards of Tonga.

This final card in the set shows the town of Nukualofa with the country's War Memorial on the right. The palace gardens are just beyond the memorial. The wharf was only being used by fishermen a few years ago, as a large international wharf has been built for cruise ships.



The Postcards of Tonga.

The picture sides of the third series are all in sepia. This is the Coconut Palm Avenue, Haapai.



*Coconut Palm Avenue, Haapai*

The Postcards of Tonga.

A beach at Haapai:



*Beach at Haapai*

The palace on Haapai, situated in the town of Pangai is usually visited each September by the king, so that he may attend the local agricultural show.



*Palace, Haapai*

## The Postcards of Tonga.

The Hospital at Nukualofa had about 20 beds. Tonga has the highest incidence of diabetes in the world.



*Hospital at Nukualofa*

This is the same wharf shown on page 14, but in the opposite direction.



*Shipping at Nukualofa Wharf*

## The Postcards of Tonga.

The ovava tree; this tree is the basis of the design of the 1d definitive.



*Ovava. Captain Cook's Tree*

The wharf at Vavau generally only saw a large ship once or twice each month. This card was postmarked at Vavau on 17 June, 1914, 2 days after it was written.



*Shipping at Vavau Wharf*

## The Postcards of Tonga.

A card showing the hospital in Vavau. It is addressed to san Francisco, where it arrived on January 12<sup>th</sup>, 1920. Half of this series shows pictures of images taken on the outer islands.



Posted to Germany, this card shows one of the few stone buildings in Nukualofa, at the time.



### The Postcards of Tonga.

The blowholes of Houma are spectacular and an obvious tourist destination. They stretch for several miles along the shore and the sea is projected 20 or 30 feet upwards.



*Blow Holes at Liku*