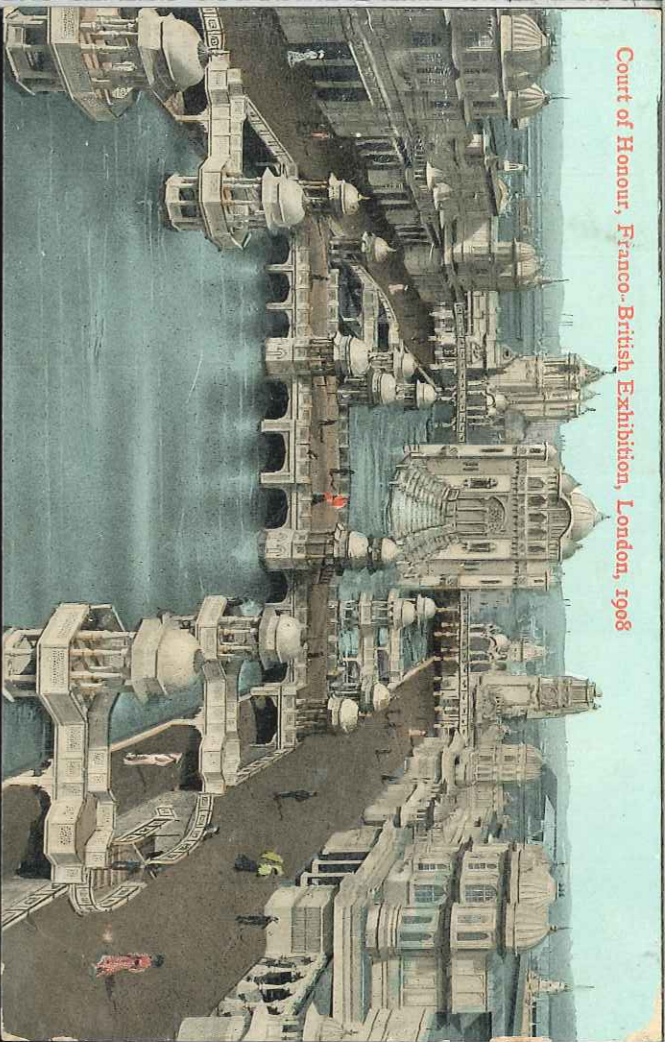


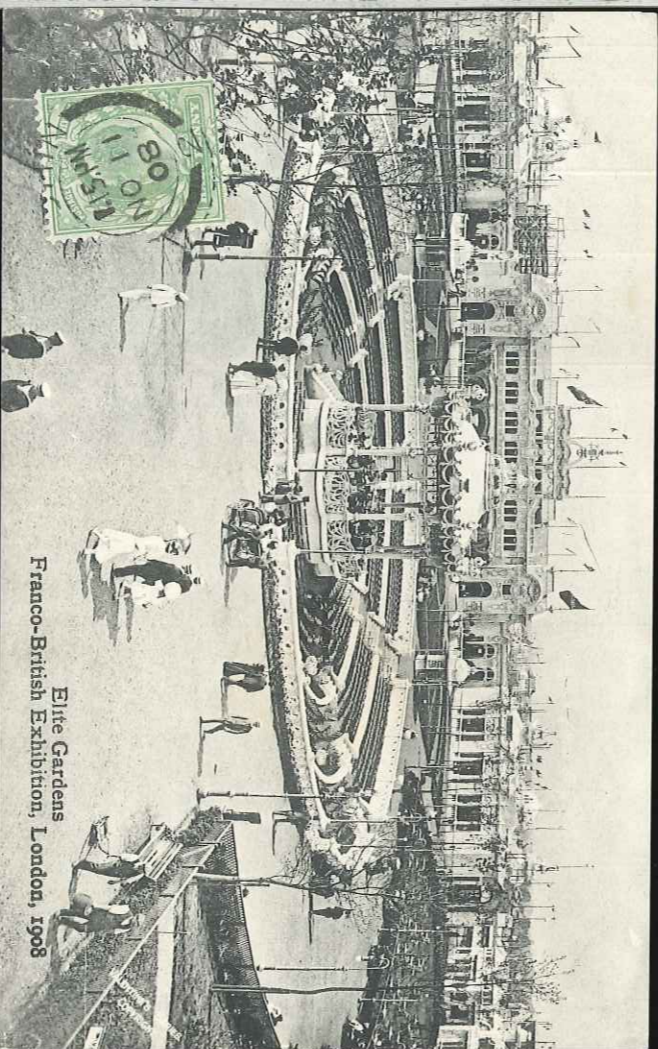
Court of Honour, Franco-British Exhibition, London, 1908



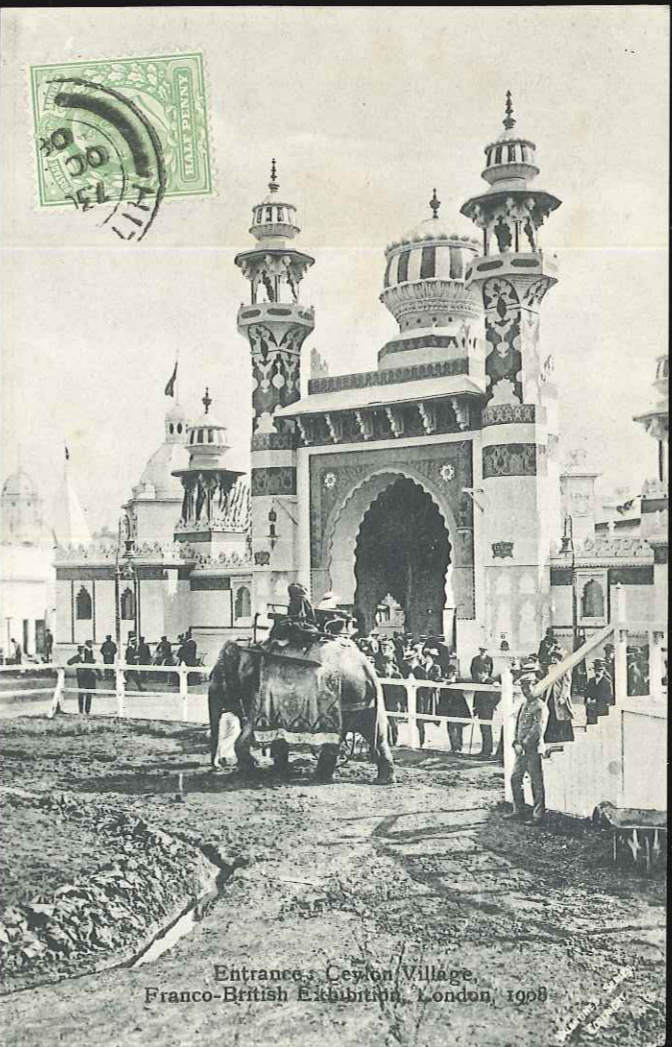
Court of Arts (South), Franco-British Exhibition, London, 1908



FRANCO-BRITISH EXHIBITION.  
The Court of Honour.



Elite Gardens  
Franco-British Exhibition, London, 1908



Entrance, Ceylon Village,  
Franco-British Exhibition, London, 1908



VIEW FROM PALACE OF MUSIC  
Franco-British Exhibition, London, 1908



THE FRANCO-BRITISH EXHIBITION.

The Railway Exhibition.



THE FRANCO-BRITISH EXHIBITION.

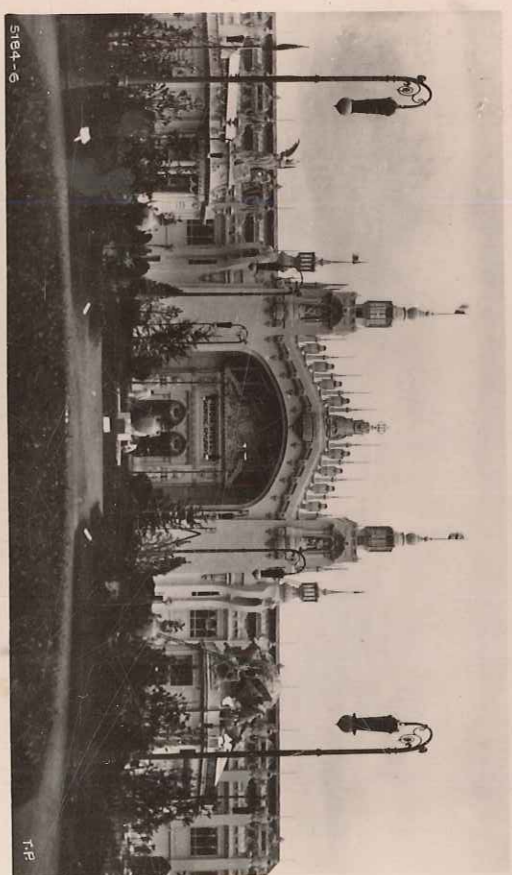
The Court of Honour by Night.



5184-4

The Palace of French Applied Arts.

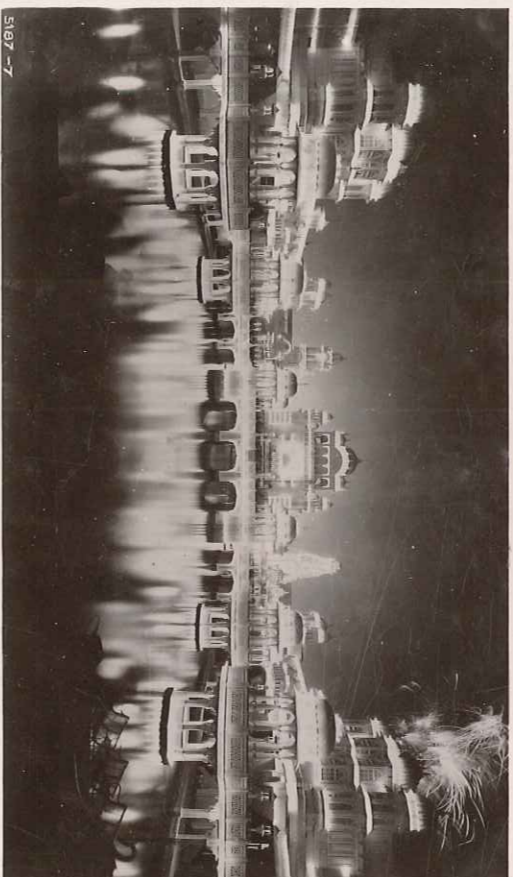
THE FRANCO-BRITISH EXHIBITION.



5184-6

The Railway Exhibition.

THE FRANCO-BRITISH EXHIBITION.



5187-7

The Court of Honour by Night.

THE FRANCO-BRITISH EXHIBITION.



5185-4

The Indian Palace.

THE FRANCO-BRITISH EXHIBITION.



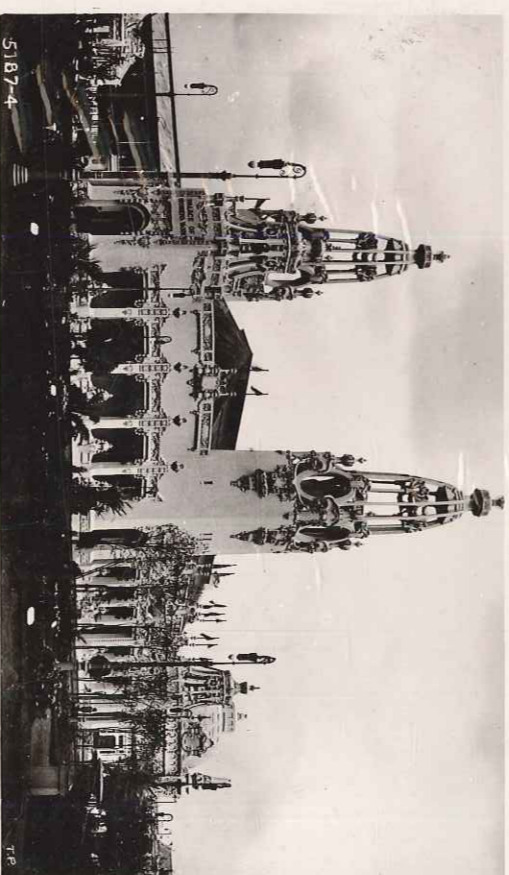
MACHINERY HALL

FRANCO-BRITISH  
EXHIBITION  
LONDON.

1908

ENTENTE PERMANENTE

The Palace of Women's Work.



5187-4

THE FRANCO-BRITISH EXHIBITION.