

KGVI 1½A ENVELOPES



OVERPRINTED 'BAHRAIN'

Bahrain - the Land of "Two Seas" referring to the abundant availability of fresh water within the oasis and the presence of the very salty Arabian Gulf around the island. Bahrain's modern history emerges with the arrival of the Al-Khalifa family in 1783. Portuguese presence on the island was there for long for the trade in pearls. Traditional crafts, pearl diving and shipping were means of income.

In 1884 the first post office was opened in Bahrain under the management of the postmaster in Bushire as part of the Bombay Circle. The development of manufactured pearls in Japan resulted in difficult times for Bahrain but in 1932 oil was struck in commercial quantities - Bahrain being the first place in the Gulf. The country adapted building its future around the oil industry and under the protection of the British. In 1947 this protection briefly became the responsibility of the government of British India, which had both commercial and strategic interests in the Persian Gulf, but it reverted to Britain following India's independence in 1947.

During 1933-1937 British Indian Stamps and Postal stationery of King George V overprinted with the word 'BAHRAIN' were in use. Later from 1937 to 1945 similar stamps and stationery of King George VI were put to use. Though several items appeared in the earlier, only 1½ Anna Dark Purple (inland) envelope with 'BAHRAIN' overprint was issued during the later period.

## THIS EXHIBIT

is a brief but painstakingly accumulated study of the KGVI 1½ Anna Envelopes Overprinted 'BAHRAIN'. Under study is the original KGVI Indian envelope (the imprinted stamp) and the 'BAHRAIN' typographed overprint, rendered by the highly skilled Indian Security Press at Nasik. As the printing and the overprinting was extremely accurate, it took observing through strong magnification, a quantity well over 2000, yeilding just one frame of varieties.

Highlights of the exhibit are the '**Ghost Images**' and '**Reversed Blanket Impressions**', which is a pioneered presentation like most of the study of varieties in the overprint as well as the study of the imprinted stamp.

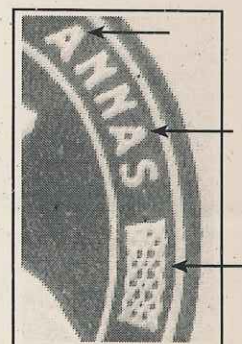




**TWO TYPES OF  
IMPRINTED STAMP**

Type 1 which seems to be the first die shows **unfilled lettering** in the oval frame, specially the A's.

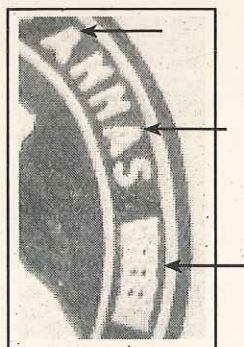
The panels separating the text show **more screened dots**.



**TWO TYPES OF  
IMPRINTED STAMP**

Type 2 which must be the second die shows **filled lettering** in the oval frame, specially the A's.

The panels separating the text show **few screened dots**.



KGVI 1½A ENVELOPES



OVERPRINTED 'BAHRAIN'



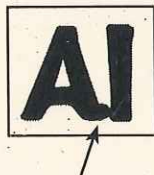
Type 1  
Crooked 1st 'A' and  
blobed foot of 'N' in  
'BAHRAIN'.

Further variety is the  
Joined 'BA' in  
'BAHRAIN'



Type 1  
Crooked 1st 'A' and  
blobed foot of 'N' in  
'BAHRAIN'.

Further variety is the  
Joined 'AI' in  
'BAHRAIN'



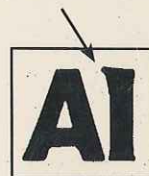




**Type 1**

The example at left shows a **Thick Overprint** with a crooked 1st 'A' and blobed foot of 'N' in 'BAHRAIN'.

Further variety is the **Serifed 'T' (II)**



**Type 1**

The example at right shows a **Thick Overprint** with a crooked 1st 'A' and blobed foot of 'N' in 'BAHRAIN'.

Further variety is the **Hooked 'P'**.



KGVI 1½A ENVELOPES



OVERPRINTED 'BAHRAIN'



Type 1  
Crooked 1st 'A' and  
blobed foot of 'N' in  
'BAHRAIN'.

Thick outer frame of  
oval, 'ND' of 'AND'  
evidently thin. Ghost  
image behind 'ANN'  
of 'ANNAS'. (additional  
characteristic)



Type I

Crooked 'AH' in  
'BAHRAIN'

Further mostly thin  
outer frame in oval.







**Type 1**

The example at left shows a **Thick Overprint** with a crooked 1st 'A' and blobed foot of 'N' in 'BAHRAIN'.



**Type 1**  
The example at right shows a **Thick Overprint** with a crooked 1st 'A' and blobed foot of 'N' in 'BAHRAIN'.

**Further variety is the Serifed 'I'.**





**Type 2**

The example displayed at left shows an Almost Perfect Overprint. This is rare for Type 2 as it came later.

**Type 2**  
The example displayed at right shows an Almost Perfect Overprint. It further shows the variety of joined 'AH'







**Type 2**

The example at left shows a Crooked 1st 'A' and blobed foot of 'N' in 'BAHRAIN'.

Further variety is the same 'A' Blinded.



**Type 2**

The example at right shows a Crooked 1st 'A' and blobed foot of 'N' in 'BAHRAIN'.

Further variety is the 2nd 'A' Blinded and curved to right





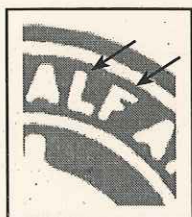


**Type 2**

An example is displayed at left showing a 'Small T' in 'INDIA' of the lower text in the oval frame.



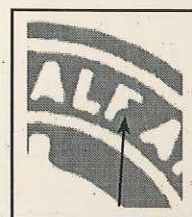
**Type 2**  
An example is displayed at right showing a 'Short LF' in 'HALF' of the upper text in the oval frame.



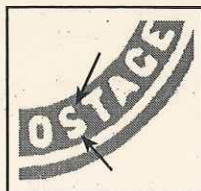


### Type 2

An example is displayed at left showing a 'Small lower bar of 'F' in 'HALF' of the upper text in the oval frame.



**Type 2**  
An example is displayed at right showing a peculiarly Thin 'S' in 'POSTAGE' of the lower text in the oval frame.

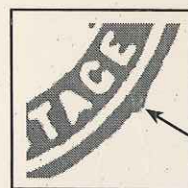




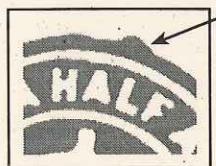


**Type 2**

An example is displayed at left showing a **'Blob on the outer oval frame at 4 o'clock'**.



**Type 2**  
An example is displayed at right showing a **'Blob on the outer oval frame at 12:30'**.





**Type 2**

The example displayed at left shows a **'Overprint shifted down'**. The overprinting was quite accurate. Not even minor shiftings exist in this issue.

**Type 2**  
The example displayed at right shows a **'Overprint shifted Upwards'**. The overprinting was quite accurate. Not even minor shiftings exist in this issue.







**Type 2**

The example displayed at left shows a Crooked 1st 'A' and blobed foot of 'N' in 'BAHRAIN'.

This variety existed for long and was seemingly left uncorrected.



**Type 2**  
The example displayed at right shows a Crooked 1st 'A' and blobed foot of 'N' in 'BAHRAIN'. Further variety is the broad serif on foot of 1st 'A'.





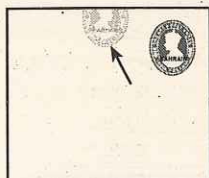
### Type 2

Rare examples of the Type 2 envelope have been seen showing a **'Light Blanket Impression'** of the imprinted stamp (which is reversed). On the example at left it is in the centre of the lower half of front.



### Type 2

Rare examples of the Type 2 envelope have been seen showing a **'Light Blanket Impression'** of the imprinted stamp (which is reversed). On the example at right it is in centre of the upper half falling 25% on the back flap and 75% on front







### Type 2

Rare examples of the Type 2 envelope have been seen showing a '**Light Blanket Impression**' of the imprinted stamp (which is reversed). On the example at left it is just below the imprinted stamp.



### Type 2

Rare examples of the Type 2 envelope have been seen showing a '**Light Blanket Impression**' of the imprinted stamp (which is reversed). On the example at right it is in the lower left quarter of the front.





**Type 2**

Rare examples of the Type 2 envelope have been seen showing a '**Ghost Image**' of the imprinted stamp in its background.



**Type 2.**

The envelope was well printed and none but a few examples have been discovered showing '**Light Litho set-off**' of the imprinted stamp on the inner side.

