



Berlin

Tokyo

Helsinki

XII OLYMPIAD
- 1940 -



XII OLYMPIAD
- 1940 -

INTERNATIONAL OLYMPIC COMMITTEE

Despite requests from the 'Committee' to the Japanese government to discontinue the 'Manchurian Campaign' we therefore have decided to award Helsinki the 1940 Games

Lausanne - 1938



Japan

XII Olympiad

1940 — Tokyo — 1940



Private postal stationery of the Yokohama Steam Navigation Company of Japan



The "Tokyo" Games were cancelled by the I.O.C. because of Japan's invasion of Manchuria

Japan

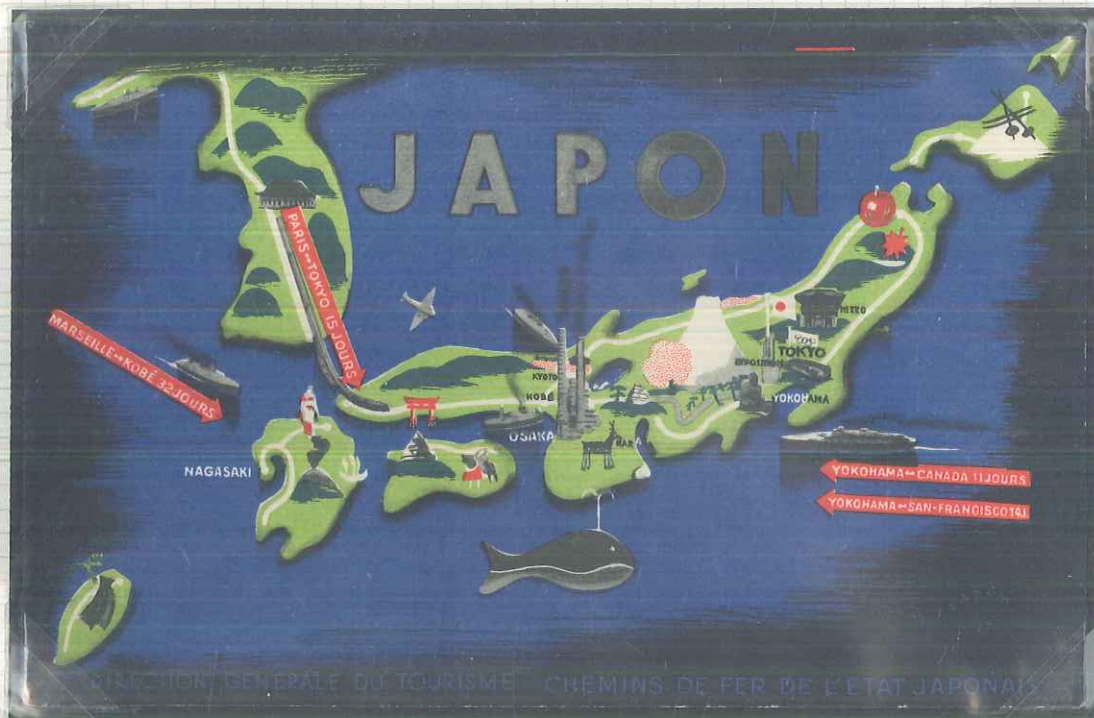
XII Olympiad

Japan

1940

—

Publicity card issued by Japanese Tourist Office in Paris



OFFICE		CARTE POSTALE	<div></div>
39, Boul. des Capucines			
PARIS			
Correspondance		Adresse	
247			
TOKYO XII^e JEUX OLYMPIQUES 1940 EXPOSITION INTERNATIONALE			

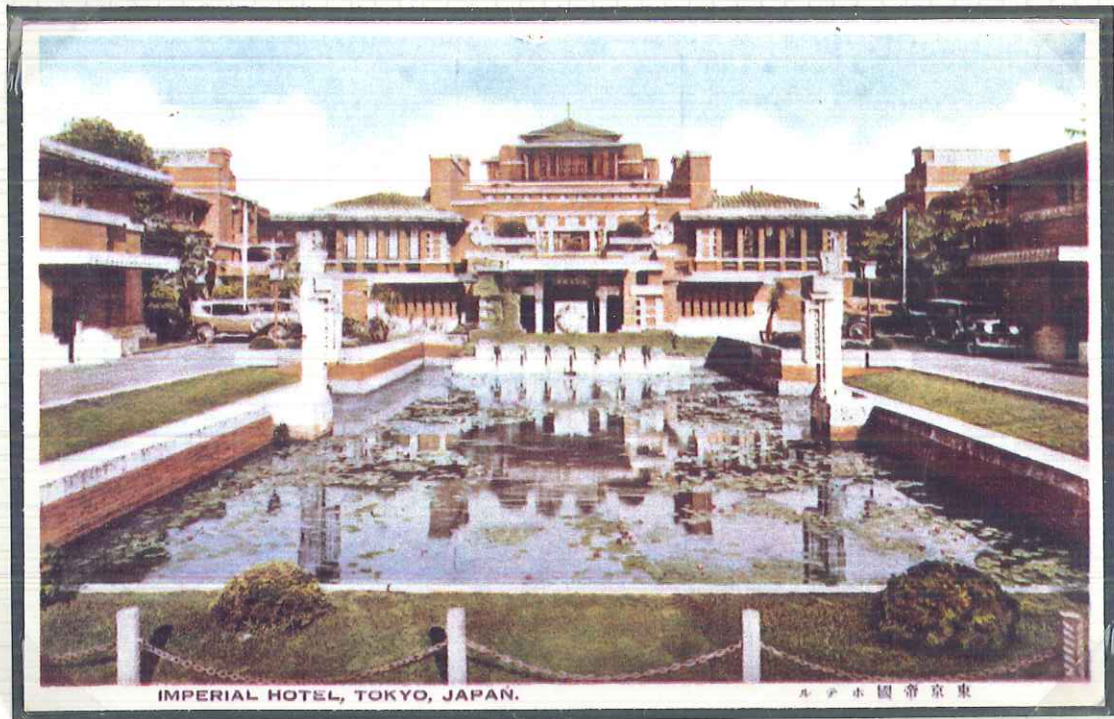
Japan

XII Olympiad

1940

Tokyo

1940



Publicity Postcard

POST CARD

Correspondence Address

POSTAGE
1½ SEN DOMESTIC
6 SEN FOREIGN

XII Olympiad Tokyo 1940

Japan

XII Olympiad

Tokyo

1940

きがは便郵

PRINTED IN JAPAN

POST CARD

THIS SIDE IS FOR THE ADDRESS



XII OLYMPIAD - TOKYO 1940

THE SUN NEVER SETS
ON THE N. Y. K. FLAG
140 VESSELS 820,000 GROSS TONS.
REGULAR SERVICES FROM JAPAN TO
AMERICA, EUROPE, AUSTRALIA, INDIA, CHINA
AND ALL OTHER PARTS OF THE WORLD.

S. S. SUWA MARU

Japanese N.Y.K. Shipping Line

"OLYMPIC PUBLICITY"

Special publicity postcard issued by N.Y.K. Line





XII Olympiad
Tokyo
1940

—
The 1940 Games were cancelled

Meiji Stadium - Venue the 1940 Games



A section of the spectators at the Rugby Match
Kwanto v Suffolk at Meiji Stadium, Tokyo.

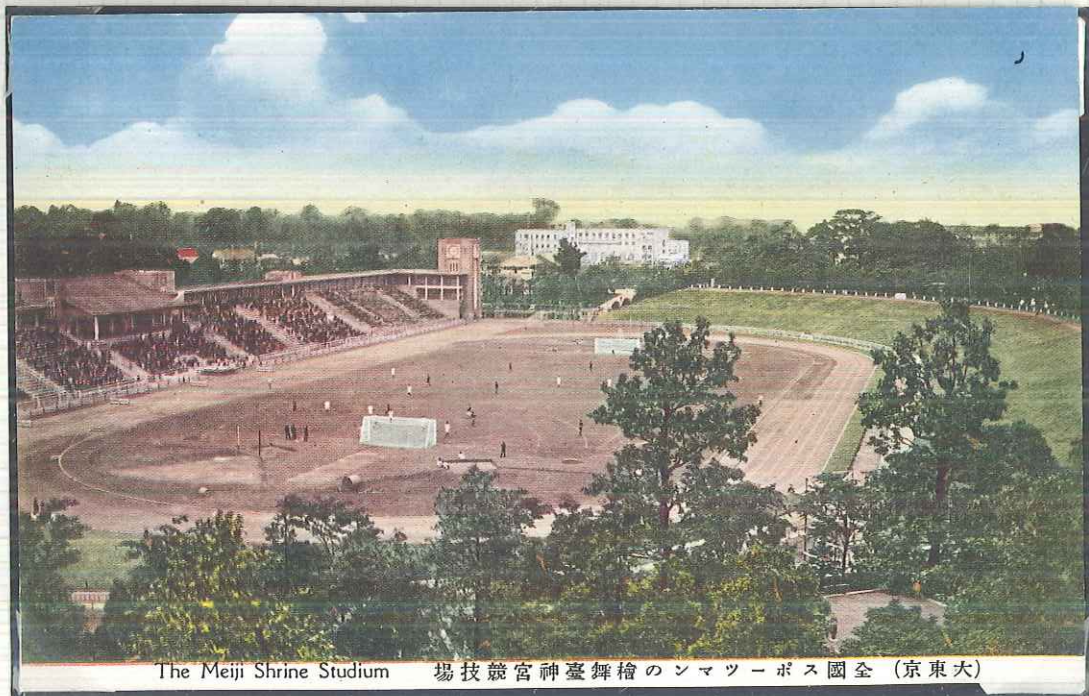
Japan



XII Olympiad
Tokyo
1940

The 1940 Tokyo Games were transferred to Helsinki by the I.O.C.

Meiji Shrine Stadium - Venue for Tokyo's Games



The Meiji Shrine Stadium 場技競宮神臺舞槍のシマツーボス國全 (京東大)

Japan



XII Olympiad

Tokyo

1940

The Meiji Shrine area for 1940 Olympiad later became baseball ground



Japan



XII Olympiad

Japan

1940

Meiji Jingu Shrine area where the 1940 stadium was to be sited

Meiji Jingu Shrine



XII Olympiad

Tokyo

1940

(15-7-38) The Games Cancelled for invasion of Manchuria and China

(15-7-38)



Dear Sir,

July 15th 1978

The 12th Olympiad("Tokyo Olympiad")was invited, to Japan by the way of International commemorative events of the 2600th anniversary of founding of the Empire in Japan, was officially decided the suspension of the Olympiad by National Cabinet Council on July 15th 1938.

We, "Olympia"(Olympic Philatelic Groups in Japan) issued the commemorative postal card to commemorate the 40th anniversary of "Visional Olympiad" Tokyo(1940 Olympiad) on July 15th 1978.

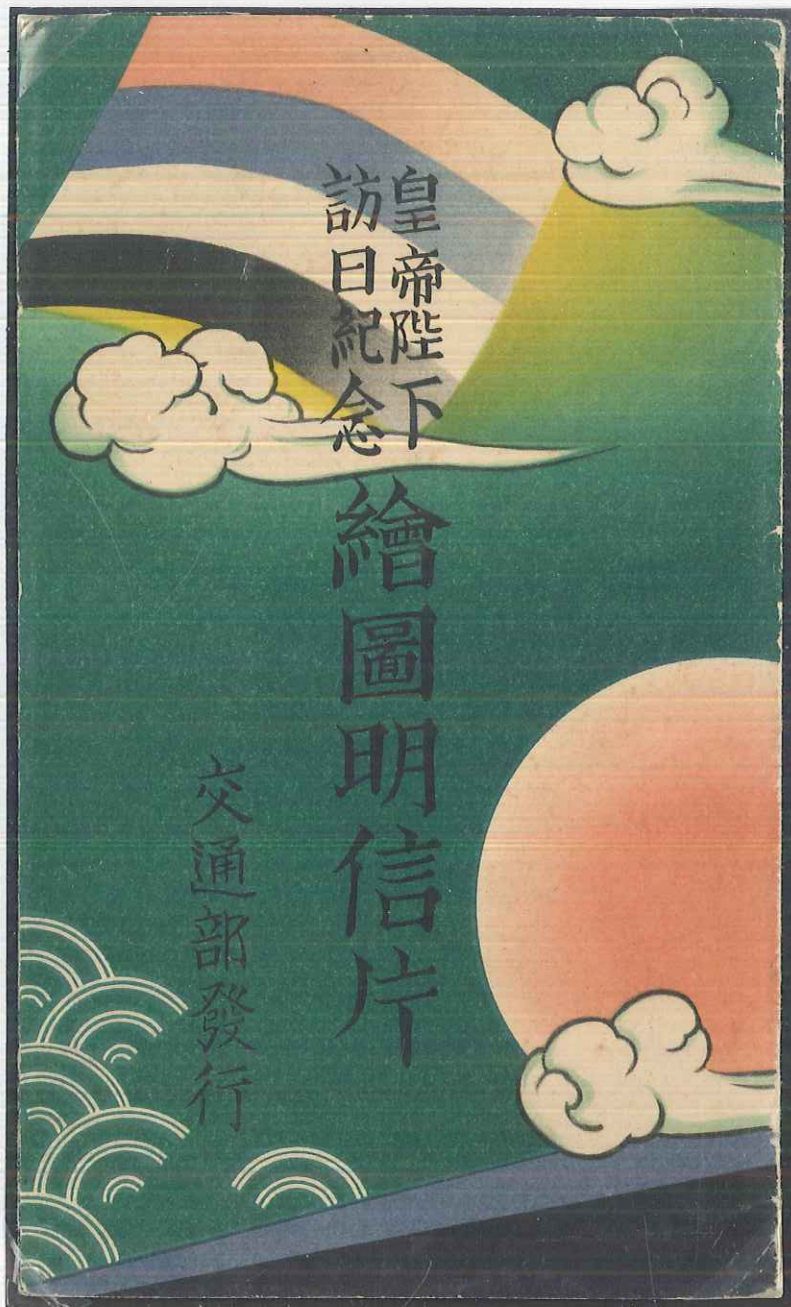
I would be highly pleased, if you could find even a little interest in this postal card.

Yours Sincerely
the editor of Olympia

Masaaki Ichimura

6-I-33 Sakura, Minoo City, Osaka, 562 Japan. (Nippon).

Masaaki Ichimura



JAPANESE VISIT
by
EMPEROR OF MANCHURIA
1935

Commemorative "Royal Visit" folder

Publicity Postmark

1940-44—The XIIth Games, awarded to Tokyo and then Helsinki; the XIIIth Games awarded to London

Neither of these two celebrations could be held because of the World War. The 1940 Games were originally awarded to Tokyo but when the Japanese became involved in war with China, they were re-awarded to Helsinki. The 1944 Games were hopefully given to London but the war still had a year to run.



JAPANESE VISIT
by
EMPEROR OF MANCHURIA
1935



XII Olympiad
1940 Tokyo 1940

Olympic Games cancelled after the Japanese Occupation
(18-9-31)

THE EMPEROR & EMPRESS OF JAPAN



Manchuria



Oberformann

Geprüft

MANCHURIAN WAR

Cover from the "Ming Lang Stamp Co." of Hai-cheng posted at the time of the Japanese occupation to London. The cover being censored by various Military Authorities in its journey.



Mr. A. W. Tyrrell:

40, King William Street,

London

XII OLYMPIAD

1940

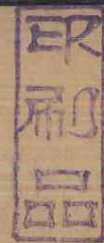
TOKYO

1940

In 1938 the I.O.C. warned the Japanese Olympic Committee unless hostilities in Manchuria ceased the 1940 Games would be withdrawn from Tokyo. As a result of the Japanese refusal, the Games were awarded to Finland's capital city of "Helsinki"

英國倫敦
歐洲

德六年三月八日



德六年三月八日

1861

1861

CENSOF

CENSOR