



26 May 1872, PARIS/MONTRouGE-PARIS, on 1,000 F CHARGÉ money letter

P.C. of the G.C. 2523 on eleven 25c Cérès + one 15c Cérès, = 2F90 postage

2x (15 gm) letter = 40c + Chargé fee = 50c + 20c/100F insurance = correct 2F90
(1 September 1871 Tariff)

26 May Billon (Puy de Dôme) arrival backstamp

(Oct. 1866. Cog. 59.)

Direction générale
des Postes.

Paris, le



186

Citoyen Directeur des Postes



Direction
du département de la Seine.

N° 6

En conformité des vœux du Citoyen Directeur
Général, je vous invite à prier le Citoyen Commissaire
de votre Arrondissement de faire ouvrir le logement
occupé par votre prédécesseur, logement qui n'est pas
un domicile particulier mais bien le local de
l'Administration, Annexe du Bureau, qu'il soit
ou non habité par les représentants de cet agent
et de faire recouvrer, en attendant l'évacuation
du local, tous les objets de matériel, livres, registres,
affectés au service du Bureau, et réintégrés dans
ces appartements.

Vous m'adresserez copie certifiée par le Citoyen
Commissaire du procès verbal, négatif ou non,
du résultat de ses recherches, et vous donnerez reçu
sur le procès verbal des objets de matériel qui vous
seront remis.

Salut cordial

Le Directeur
du Service des Postes de Paris

[Handwritten signature]



in-house letter from (2-line red franchise) Director of
Paris Postal Service (s/Mauvière);
blue oval and handwritten Commune archive location;
red 19 April 1871 franchise date stamp
DIRECTION DES POSTES/SEINE;
mailed from PARIS/MONTRouGE-PARIS
19 April 1871

[a rare Commune Period document]

(Roumet cert. 6848)

Passy - 1

Postal facility since at least 1779; full-service post office after August 1823

PC 2386 GC 2793



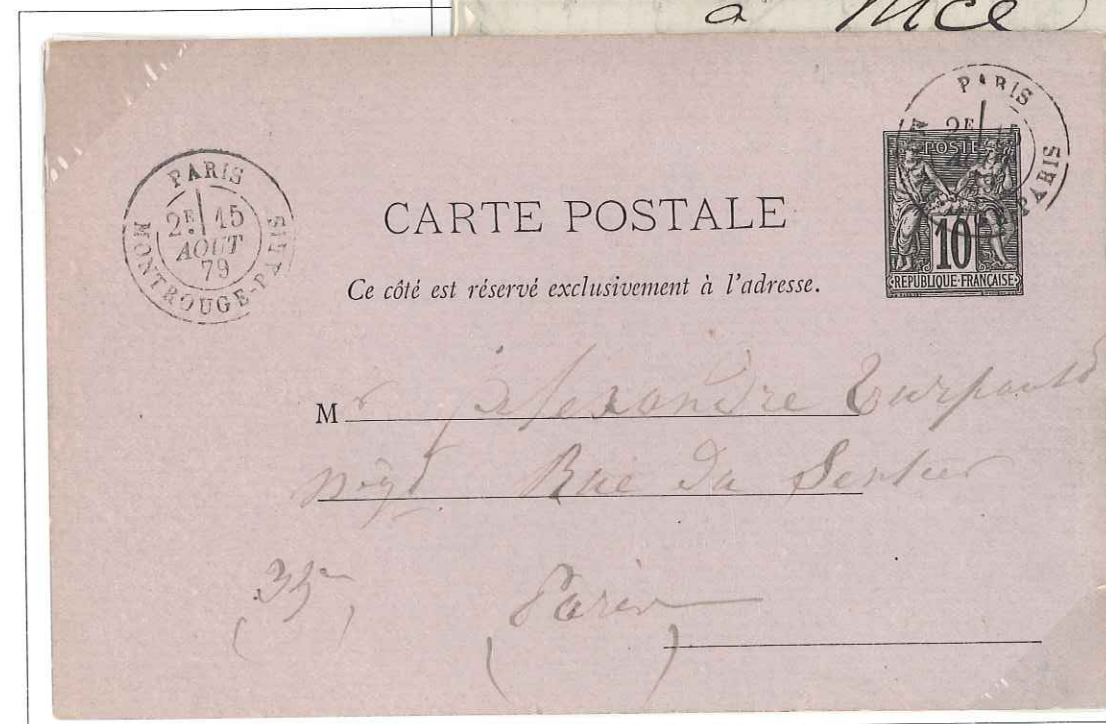
11 June 1855,
PASSY-LES-PARIS/(60)
[blue-black] +
PC 2386 [blue]

on printed death notice, sent at 10c
printed-matter rate
(bureau to bureau)
(31 December 1852 Tariff)



26 May 1876, PARIS/
MONTROUGE-PARIS

6 Oct. 1876, PARIS/
MONTROUGE [date stamp
introduced after
March 1876]



15 Aug. 1879, PARIS/MONTROUGE-PARIS
[2nd type: smaller and finer lettering; introduced 1877]

Became Paris 69 in 1882, at 8, Avenue d'Orléans



29 April 1877



late (1884) usage



30 Dec. 1862, PASSY LES PARIS/(60)
10c Paris local letter (1 July 1853 Tariff)
same day arrival backstamp

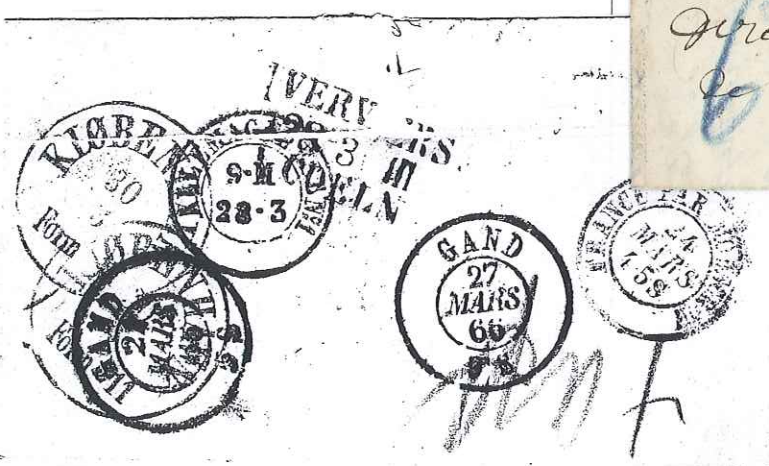
premature **Fist Day** strike of the GC
(officially on 1 Jan. 1863)

28 July 1864,
PASSY-LES-PARIS/
(60) + GC 2793



23 March 1866, PARIS/PASSY-LES-PARIS
to Denmark, redirected via Köln and Verviers,
to General Delivery at Ghent, Belgium,
then once again to Copenhagen

5 décimes (for unpaid mail) French tax (black),
+ other countries' transit taxes (red, blue)



Moved to 9, Rue Guichard in 1871(?)

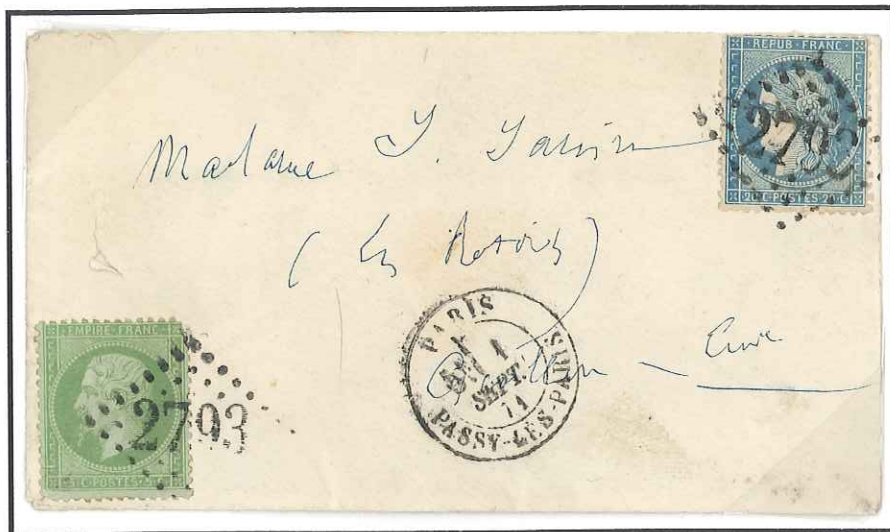
12 July 1853
PASSY-LES-
PARIS/(60)
+ PC 2386
two 25c
Republiques, for
50c domestic
2x letter
[7½-15 gm]
(1 July 1850
Tariff)



16 Feb. 1854,
PASSY-LES-PARIS/(60)
+ PC 2386
on 25c Republique

26 June 1854
PASSY-LES-PARIS/(60)
+ PC 2386
last week of 25c rate
1x domestic letter





PARIS/PASSY-LES-PARIS,
1 Sept. 1871 + GC 2793
first day of increased to 25c
domestic 1x letter rate

PARIS/PASSY-LES-PARIS +
GC 2793
1 April (no year)
[stamp issued Fall 1871 to
mid-1873]



1 PARIS 1/PASSY-LES-PARIS, 20 Dec. 1874 [new, October 1874 date stamp]
on 10-15 gm printed matter within wrapper, @ 4c
(1 January 1874 Tariff)



PARIS/PASSY-LES-PARIS,
18 May 1867, + GC 2793
Marseille 3 (19 May), via Beritish
packet to **Peshawar, Inda**
indistinct red British and Indian
hexagonal backstamps
2x (10-20 gm) prepaid letter
@1F60, via pre-canal Suez and
Bombay (rate in effect from
1 January 1866)

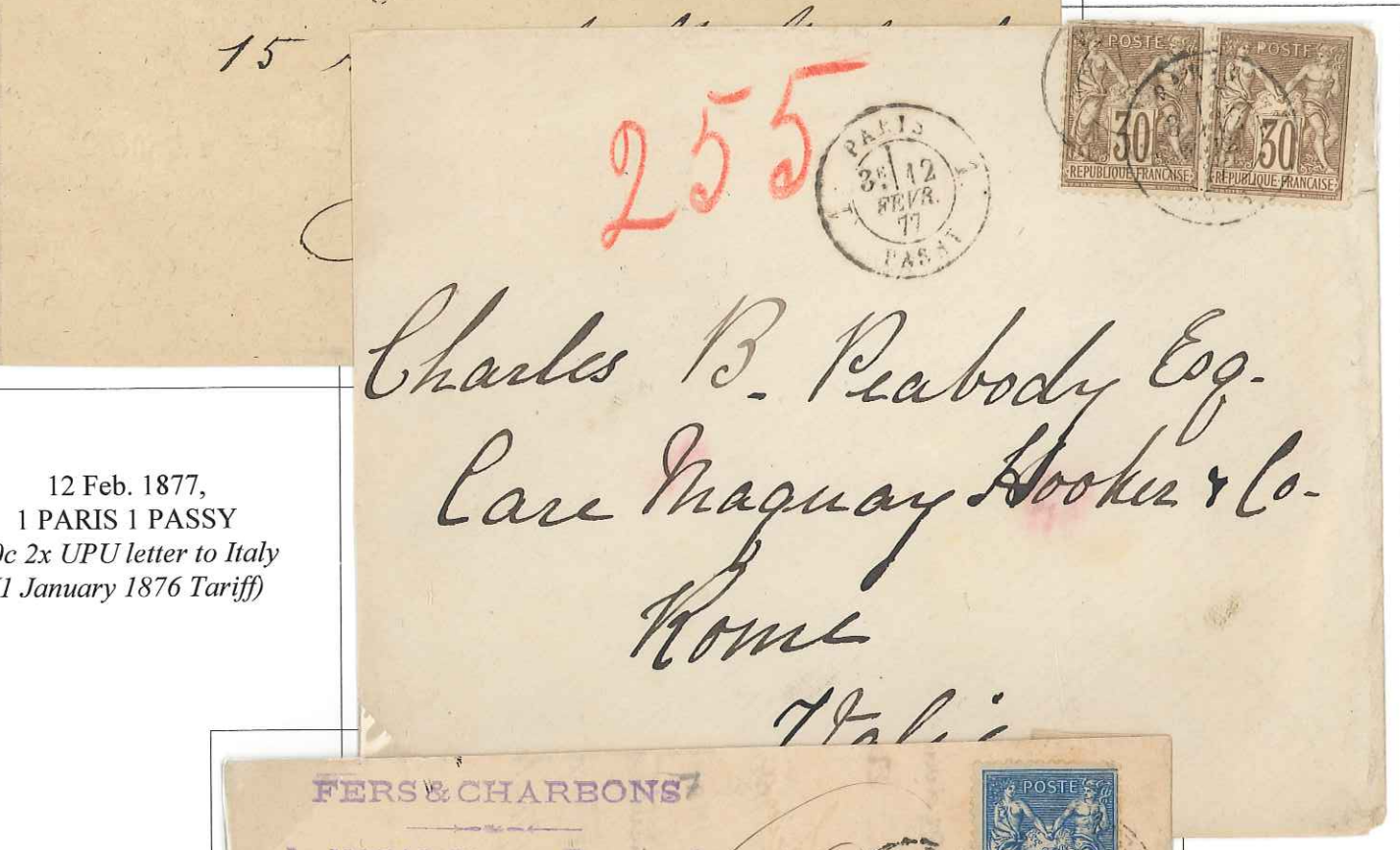
PARIS/PASSY-LES-PARIS, 22 Oct. 1869 +
GC 2793
50c 1x letter rate to Italy
25 October arrival backstamp



PARIS/PASSY-LES-PARIS ,
19 Oct. 1870, + **empty lozenge**
on 30c CHARGÉ letter sent within
Paris during the Siege
[lack of a suitable GC 2793 due to
the Siege]
[front only]



8 March 1878,
1 PARIS 1 PASSY



12 Feb. 1877,
1 PARIS 1 PASSY
[date stamp introduced October 1874]
50c 1x letter to USA (rate from 1 July 1871)



10 Nov. 1888 [late usage]. 1° PARIS 1° PASSY [a post-March 1876 date stamp]

Became Paris 70 in 1881



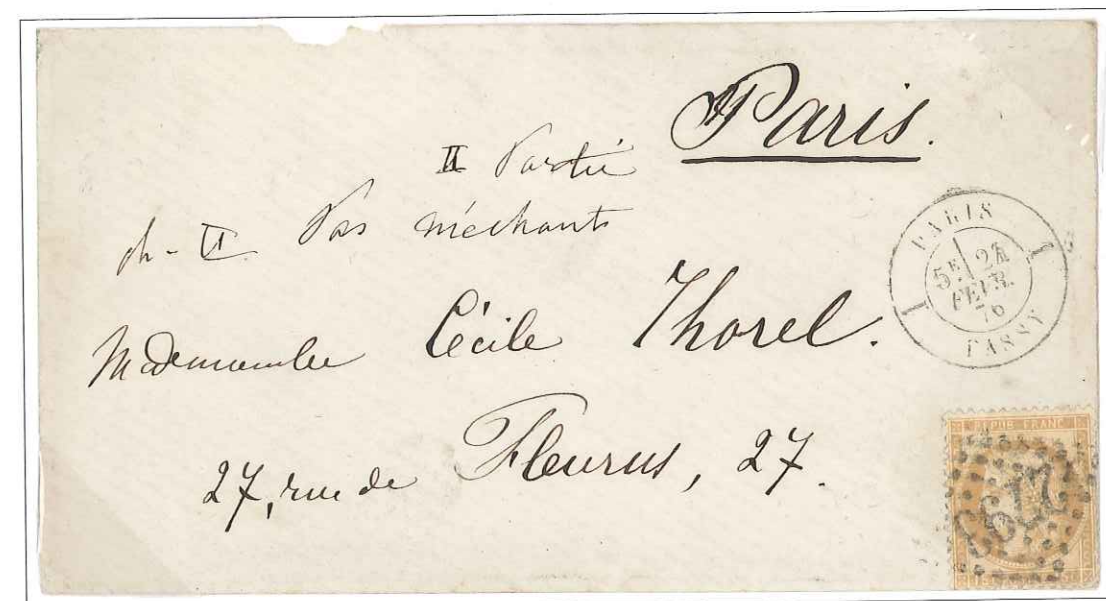
17 Nov. 1875, 1 PARIS 1/PASSY-LES-PARIS + GC 2793
[date stamp introduced October 1874]
50c 1x letter to USA (rate from 1 July 1871)



3 Dec. 1874 - 30 Jan. 1876
early and late use of
1 PARIS 1/PASSY-LES-PARIS



14 Oct. 1876
late use of Cérés
stamp



24 Feb. 1876, 1 PARIS 1 PASSY [first month of use] + GC 2793

post-1881 date stamp:

16 Oct. 1883, PARIS/PASSY 2°
25c 1x UPU letter to USA
(16 February 1879 Tariff)



8 April 1884, PARIS/PASSY 2°



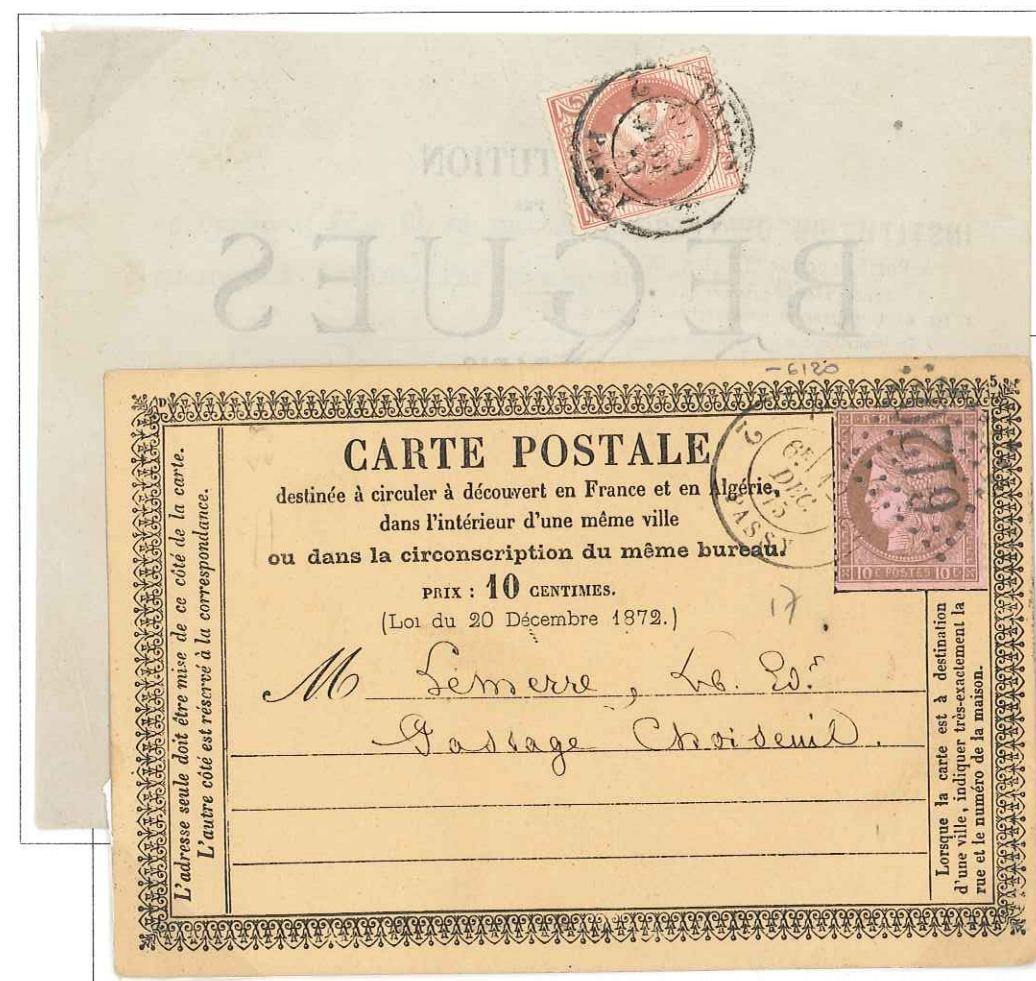
22 July 1884; as above
40c domestic 1x registered letter (16 January 1879 Tariff)

Became Paris 71 in 1881

Passy - 2

Post office opened 16 June 1872, at 3, Place d'Eylau; full-service from 1877

GC 6120

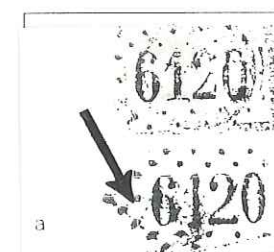


2 PARIS 2 PASSY, April? 1873
[base of #s faces outward]

2c printed matter @<5 gm
(1 September 1871 Tariff)



reengraved GC



1 Oct. 1880
[base of #s faces inward]



2 PARIS 2 PASSY, 3 Feb. 1881
[base of #s faces outward]

Saint-Mandé

Full-service post office outside the walls since at least 1840

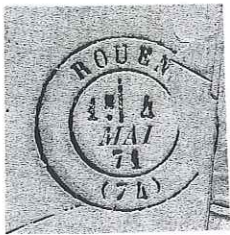
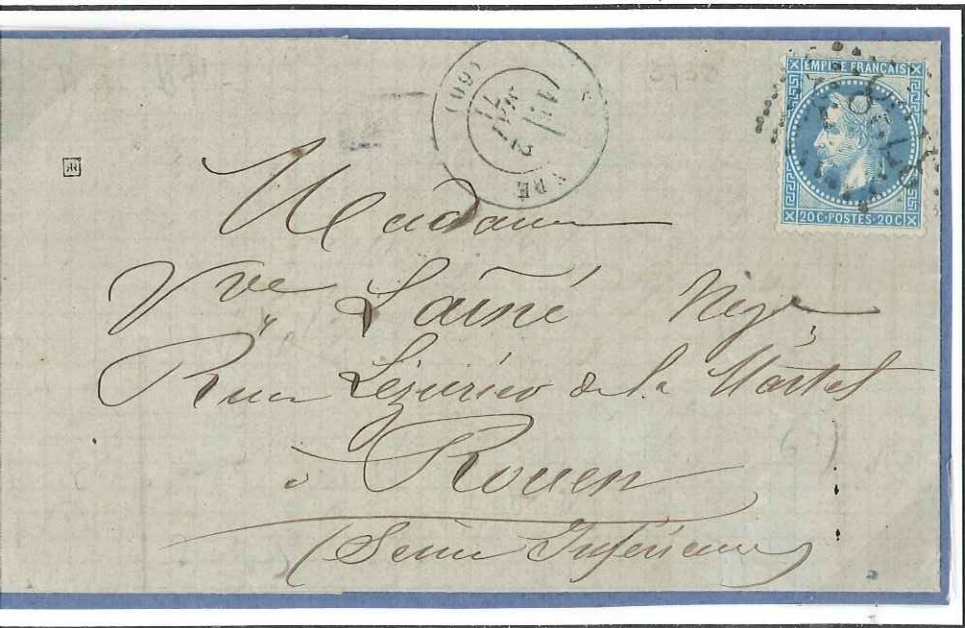
PC 3180 GC 3738



27 June 1859, St. MANDÉ/(60)
+ PC 3180



1 Jan. 1868, St.-MANDE-EXTRA
[possible 1st day of use of date stamp]
+ GC 3738



2 May 1871, St. MANDÉ/(60)
+ GC 3738 to Rouen
sent at height of blockade
of Communard Paris
Rouen, 4 May arrival backstamp
(rare example of passed-through
mail)

Passy - 3

Post office opened in 1879 at 50-52, Avenue de la Grande Armée



5 Dec. 1879, PARIS-PASSY/AV. G^{de} ARMÉE

Became Paris 62 in 1881



22 Nov. 1875, St. MANDÉ/(60) small single circle (Type 16) + GC 3738



8 Aug. 1879, St.-MANDÉ-EXTRA/(60) Type 16 date stamp



[hand-carried out of Paris during siege of the Commune]

dated Paris, 15 May 1871, but postmarked at the St. MANDÉ GC 3738 bureau (still held by Communards) on the 16th

Cambrai, 18 May arrival backstamp



17 Oct. 1872, St. MANDÉ/(60) + GC 3738
[1871-72 reutilization of date stamp]

ull-service post office, **within the walls**, opened in 1860 at 11, Rue de la Voûte **PC 3180bis** **GC 3739**



16 Oct. 1862, St. MANDÉ/PARIS + PC 3180bis



24 Sept. 1864, St. MANDÉ/PARIS + GC 3739

Moved to 20, Rue du Rendez-Vous in 1866

Date stamps of the **unannexed part** of Saint-Mandé, 1881 and later:

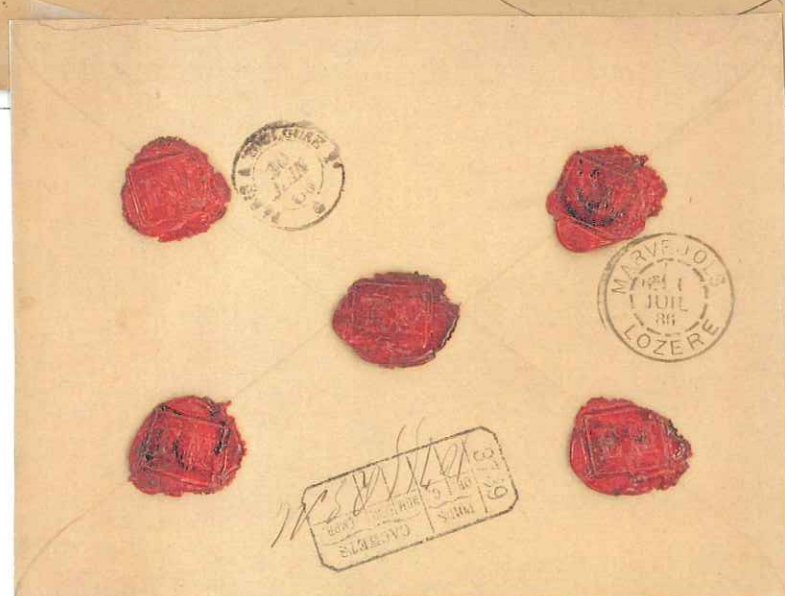


27 Oct. 1881
SAINT-MANDÉ/SEINE
[blue]

26 Dec. 1883
SAINT-MANDÉ/SEINE



15 Oct. 1888, St. MANDE/SEINE
later, "type [18]84" date stamp



30 June 1886, late use of PARIS/St. MANDÉ-PARIS date stamp from now-Paris 73 [per # in circle], on 500F insured money letter [late retention of 3739 nomenclature on accountancy box shown on back]

1x letter (10.75 gm) 15c
CHARGÉ fee 25c
insurance, 10c/100F 50c
postage 90c

(rates in effect from 16 January 1879)

Much of outside-the-wall Saint-Mandé was postally unified with the inside-the-wall part in 1881, as Paris 73



14 Aug. 1867, PARIS/St. MANDÉ-PARIS
[date stamp introduced March 1866] + GC 3739



21 Oct. 1876, PARIS/
St. MANDÉ-PARIS

500F money letter (red
CHARGÉ)

pr. 80c Cérés + 15c gray
Type I

1x (10.3 letter) .25
Registry fee .50
insurance @20c/100F 1.00
postage 1.75

Moved to 7, Rue de Villiers in 1869(?)



26 July 1869, PARIS/LES TERNES + GC 3921

10c Paris local rate



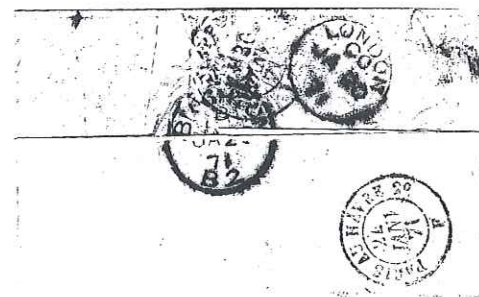
12 Jan. 1871, PARIS/LES TERNES, 30c prepaid to Brighton, England

left Paris 15 January 1871 on balloon "Vaucanson"

backstamps: London and Brighton, 20 January

forwarded to Dieppe, France, via Bureau Ambulant/Ouest, 22 January

backstamp: Dieppe, 30 January arrival



Les Ternes

Full-service post office from 1 January 1838 at 37, Avenue de l'Arc de Triomphe

PC 3333 GC 3921



8 Jan. 1862, LES TERNES/(60) + PC 3333

16 Oct. 1862, LES TERNES (60)
on strip of four of the 1c imperf. Empire

4x rate for domestic printed matter within
wrapper, 15-20 gm
(1 August 1856 Tariff)



22 Sept. 1865,
LES TERNES/(60)
+ GC 3921



10 Jan. 1873, PARIS/LES TERNES + GC 3921, to Burma

1F30 prepaid 1x letter via British packet from Brindisi to Bombay (in effect from 1 July 1871)
backstamps: Paris-Modane (11 Jan.); [British] seal Post Office (17 Jan.);
red Calcutta (3 Feb.); red Akyab [Burma] (6 Feb, 1873 arrival)



10 Jan. 1874, PARIS/LES TERNES
+ reengraved GC 3921

10 April 1876. PARIS/LES TERNES
[first day of use of date stamp as killer
on letters]

10 April 1876. PARIS/LES TERNES
1x registered local letter to
Passy 2
(1 January 1876 Tariff)



PARIS/LES TERNES, 31 Jan. 1871
+ GC 3921, to Turin, Italy
14 February transit and arrival
one week Armistice Period of
uncertain international franking

"I profit from the Armistice to give you my
news..."



PARIS/LES TERNES, 31 Oct. 1873+ GC
3921, to Calcutta via Brindisi

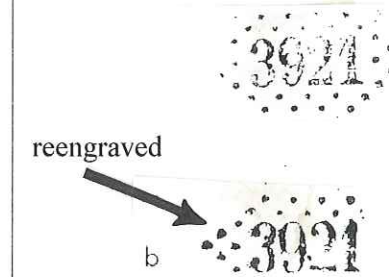
red box P.P. [paid from port to port],
changed to 2 strikes PD [paid to destination]

backstamps: British SEA/POST OFFICE/F/
7 NOV: within circle; illegible red arrival

1x letter at <10 gm @1F30 (rate in effect
from 1 July 1871)



PARIS/LES TERNES, 27 Nov. 1873 + reengraved GC 3921



Vaugirard - 1

all-service post office since at least 1791.

PC 3502 GC 4116



27 Sept. 1855,
VAUGIRARD/(60)
+ PC 3502

May 1863,
VAUGIRARD/
+ GC 4116
domestic
x letter
1/2-15 gm]
July 1854
Tariff)



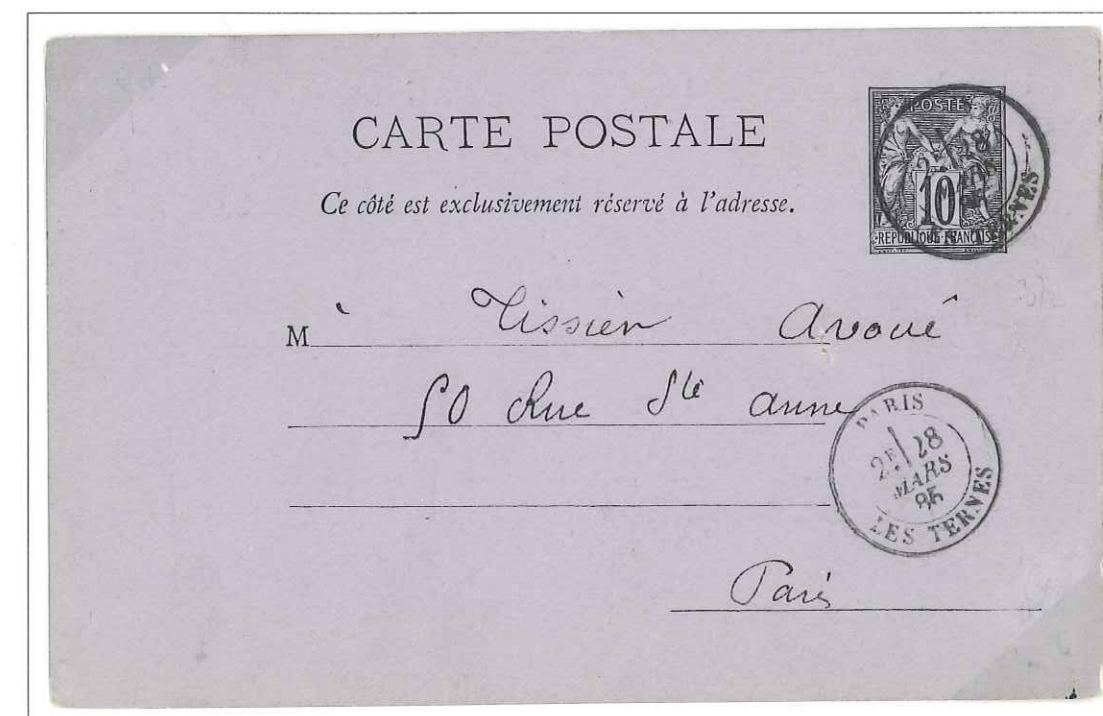
18 Jan. 1869, PARIS/VAUGIRARD + reengraved GC 4116



12 June 1881, PARIS/LES TERNES
[smaller and finer letters; no record of when introduced
(but no earlier than 1876)]



Sept.-Nov. 1877 dates



28 March 1885 (late usage of date stamp)

Became Paris 74 in 1882, at 16, Rue Bayen

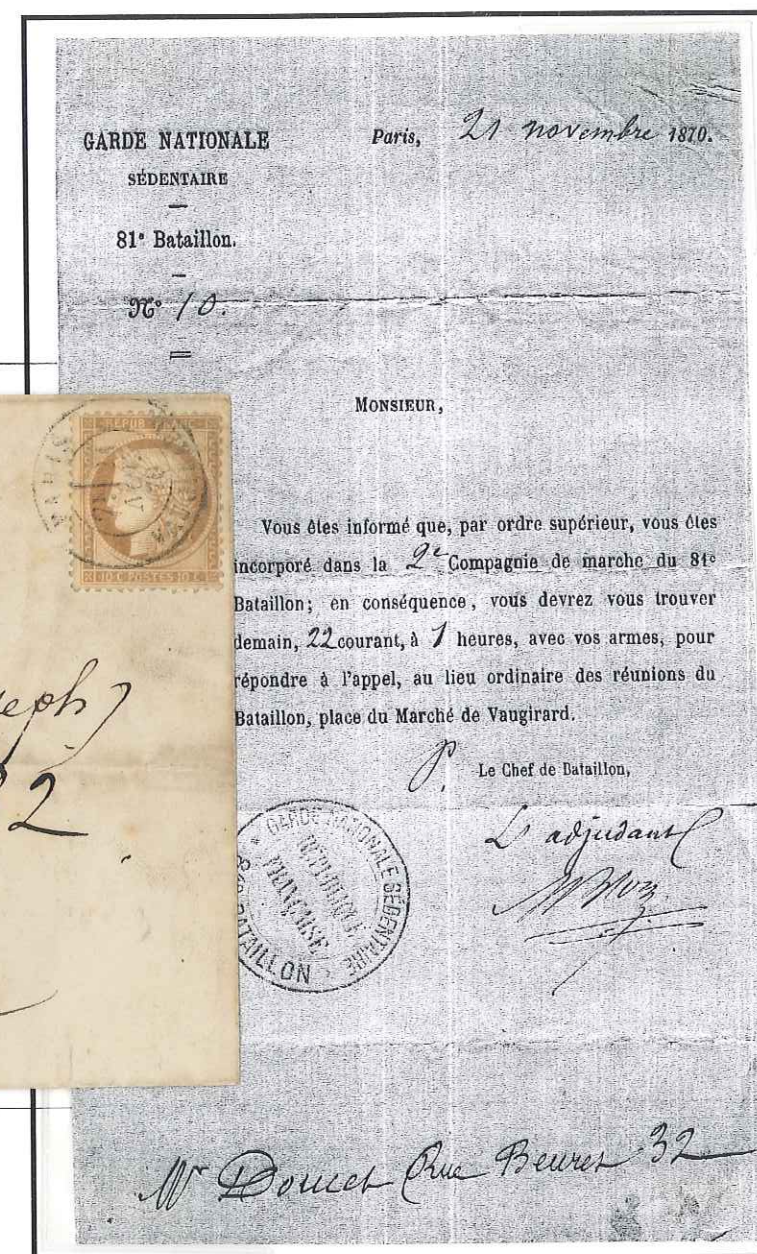
6 Feb. 1871, PARIS/VAUGIRARD
 dateline 6 February, from
 "Porte de Versailles"
 backstamp 12 February
 (= first official arrival date from Paris)

TAXE ALLEMANDE on stamp and blue
 German 20[c]--rarely seen together



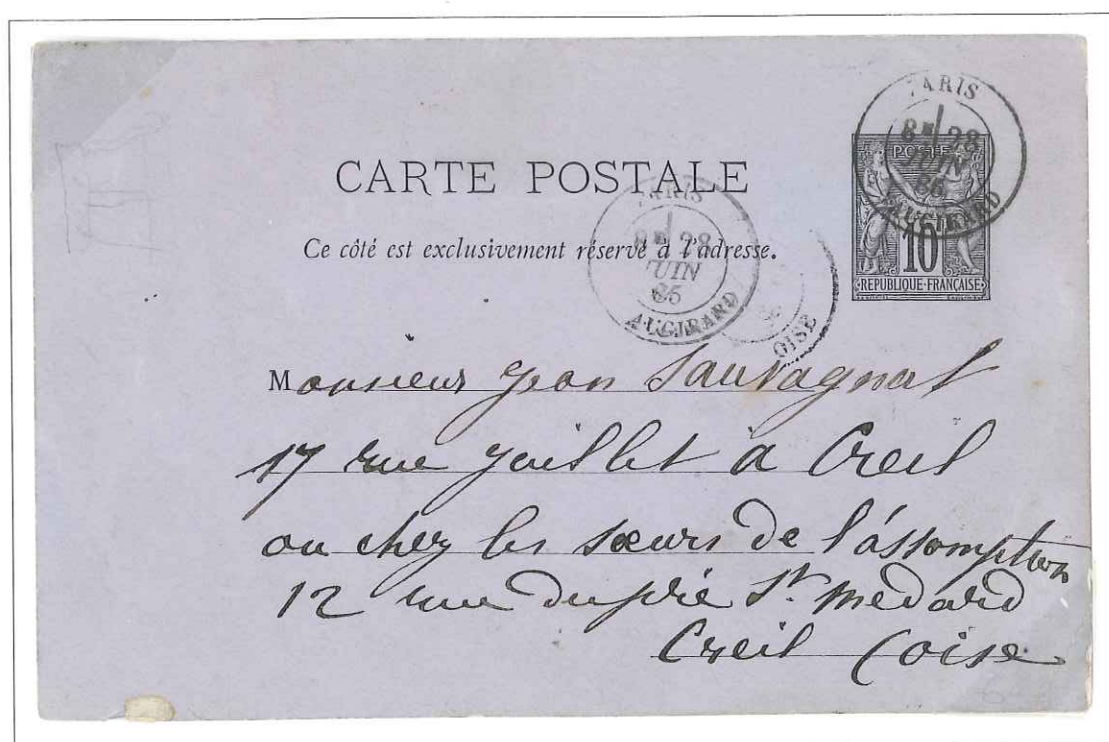
11 Nov. 1870, PARIS/VAUGIRARD
 order to report to duty during Siege of Paris

blue administrative cachet of 81st Battalion
 of permanent National Guard, on letter
 [Sénéchal franchise N°6553]
 (ex-Sénéchal)



28 Dec. 1875
 1 PARIS 1 VAUGIRARD
 + GC 4116

Post office located from 1872(?) at 14, Rue Bausset; moved to 93, Rue Blomet in 1881.
 Became Paris 75 in 1882, but used a PARIS/VAUGIRARD date stamp with smaller and finer
 letters from 1881 until 1885.



28 June 1885
 PARIS / VAUGIRARD
 [new type]

4 Jan. 1871, PARIS/VAUGIRARD

Paris-Siege franchise letter to Paris
 from soldier in 2nd Somme Battalion,
 stationed at Issy



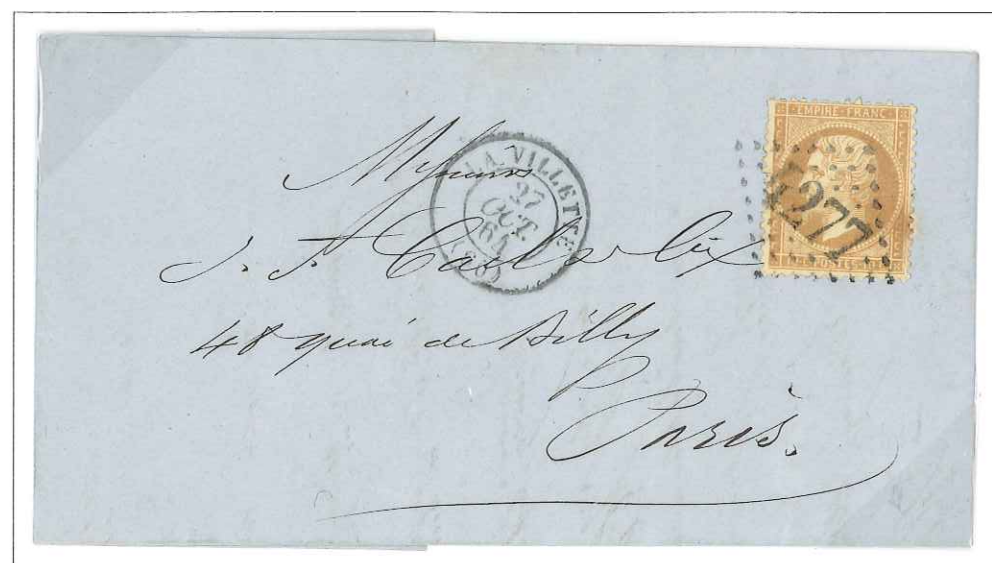
La Villette – 1

Full-service post office from 27 August 1823

PC 3637 GC 4277



26 July 1854, LA VILLETTE/(60) + PC 3637



27 Oct. 1864, LA VILLETTE/(60) + GC 4277

Vaugirard –2- (Plaisance)

Full-service post office opened 16 January 1872 at 228, Rue de Vaugirard

GC 6124

30 Dec. 1872, 2 PARIS 2/
VAUGIRARD
+ GC 6124



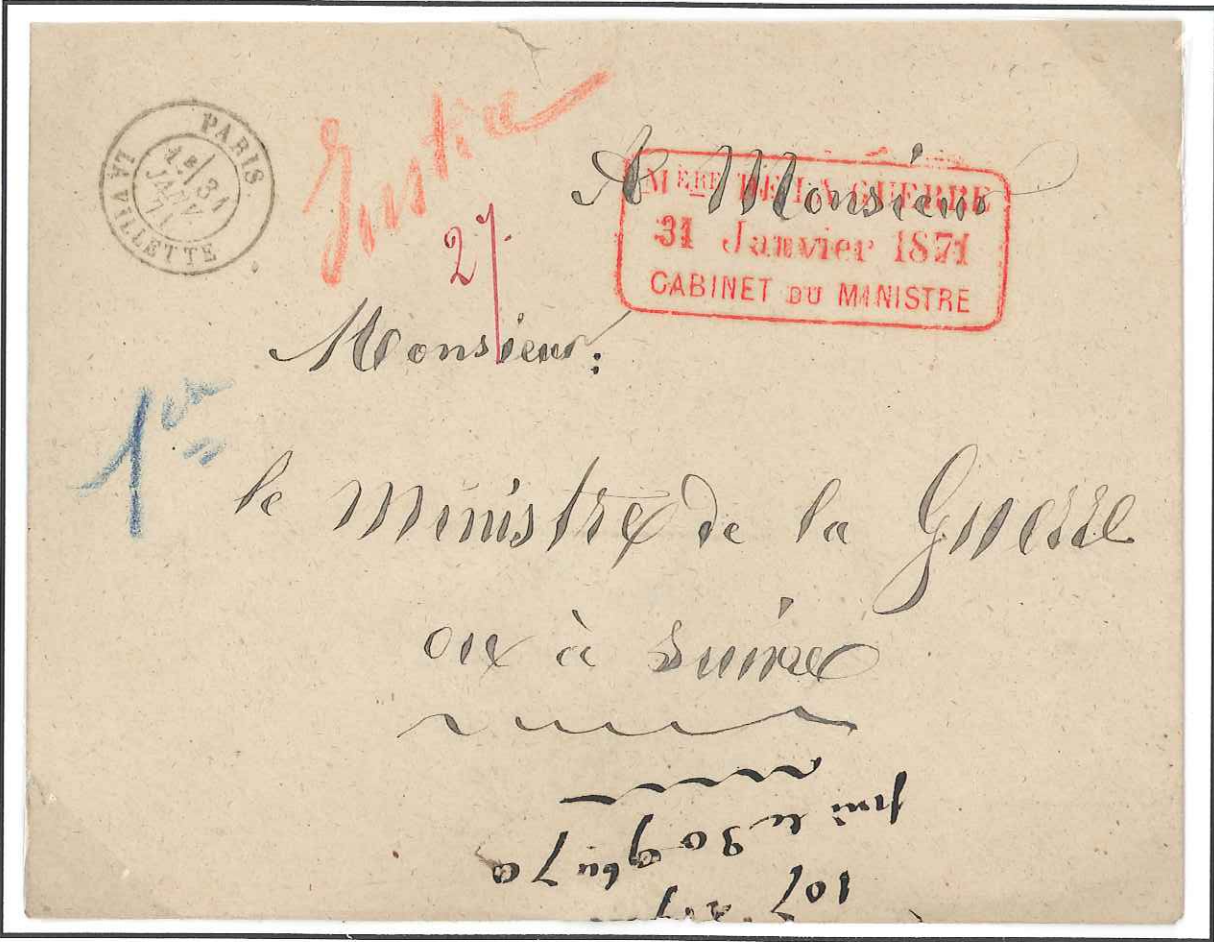
6 Oct. 1876.
2 PARIS 2/
VAUGIRARD
to Helsingfors, Finland
via St. Petersburg

30c Cérès 1x letter
Julian Calendar
back stamps of 27 and 28
October

11 Dec. 1884,
PARIS/
PLAISANCE



Official mail sent out of Paris during brief interim between 28 January Armistice and 4 February partial resumption of regular mail



31 Jan. 1871 PARIS/LA VILLETTE franchise envelope to absent Ministry of War,
+ red boxed 3-line 31 January 1871 arrival marking of the Ministry's Cabinet

[upside-down writing probably not germane]



24 Dec. 1870, PARIS/LA VILLETTE + GC 4277
on 10c Siege stamp, Paris local letter during the Siege



20 Sept. 1871
PARIS/LA VILLETTE + GC 4277
to Communard prisoner on hulk
in Cherbourg harbor
20-mm circular censor cachet:
OK to deliver/Verified
24 September Cherbourg arrival
backstamp



12 Dec. 1872

PARIS/LA VILLETTE, in combination with Paris 4 killer of Rue d'Enghien

Paris Bureau 4 temporarily transformed, by Service Order of 6 Jan. 1872, to a *Bureau de Passe* (mail transfer office), charged with sorting mail from the NE Paris region (Aubervilliers and Pantin, outside the walls, and La Villette)

#4 was one of a few such bureaus servicing mail from some suburbs and nearby towns

Service poorly documented; information lacking as to when it was terminated



10 July 1876
1 PARIS 1
LA VILLETTE
[base of 1s to outside]
15c Paris local letter
(1 January 1876 Tariff)

Moved to 101, Rue de Flandre in 1871(?)



26 Dec. 1871, PARIS/
LA VILLETTE + GC 4277
40c [overpaid] 1x letter to
Luxembourg



3 March 1872,
PARIS/LA VILLETTE
+GC 4277
to German-annexed Mülhausen
4 March arrival backstamp

German "2" (décimes) tax for
deemed unpaid there

16 Feb. 1873, PARIS/
LA VILLETTE
as receiving postmark on
10c inter-suburban card
from Montrouge



La Villette - 2

Post office opened 16 January 1872 at 139, Rue d'Allemagne; full-service from 1877

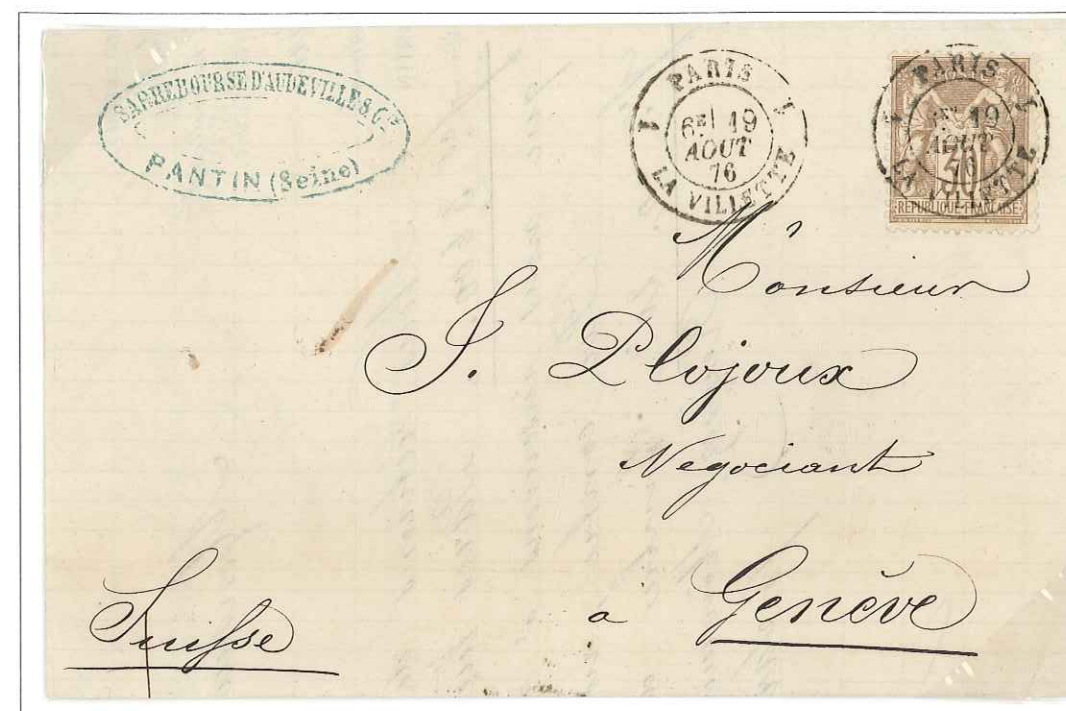
GC 6123



3 Aug. 1872, 2 PARIS 2 LA VILLETTE + GC 6123
[base of 2s to outside]



31 July 1873, 2 PARIS 2 LA VILLETTE [base of 2s to outside] + GC 6123
Forwarded to General Delivery without charge for the service
[ex-J.C. Coulon]



19 Aug. 1876
1 PARIS 1
LA VILLETTE
[base of 1s to outside]
30c 1x letter to Switzerland
(1 January 1876 Tariff)



1 Oct. 1880
[base of 1s to inside,
Introduced after 1876]

23 July 1882
1° PARIS 1°
LA VILLETTE
[a post-1876, possibly 1881
or later, date stamp]



2 March 1882
1° PARIS 1°
LA VILLETTE



Had become Paris 76 in 1881

MISCELLANEOUS MARKINGS AND USES

Small Equivalents of the Large Numerals

Known as **PCs of the GCs**, they were used mainly, but not exclusively, at money-letter windows of full-service post offices.



15 Sept. 1866, PARIS/LA CHAPELLE-St.-DENIS + PC 892 of the GC
+ red CHARGÉ and accountancy box, on 150F insured letter

1x letter	20c
CHARGÉ fee	20c
postage	40c (Law of 4 June 1859)



3 Dec. 1867, PARIS/MONTRouGE-PARIS + PC 2523 of the GC + red CHARGÉS
10c Paris local rate on advisory form to sender on transmission of a money letter



25 May 1876, 2 PARIS 2 LA VILLETTE
[base of 2s to outside]



6 Sept. 1876 and 11 March 1877
[base of 2s to outside]



4 June 1877
[base of 2s to inside, + smaller letters]
probably introduced Spring 1877

Special Routings from Paris to the Suburbs

Markings in use mid(?) 1852-May 1856

Route N° 1 served the within-the-walls suburban post offices, and N° 3 those beyond the walls. (N° 2 was at this time assigned to Lille and the north of France).



27 June 1855, 1st mail pickup [left side outer curcle], Route 1 [right side circle],
Paris to Passy
*(15c.) tax [1½x penalty rate] on unpaid Paris local and within-the-walls letters
(11 July 1853 Tariff and Law of 25 May 1854, which extended this
preferential rate to the immediate suburbs)*



22 April `1855, 3rd mail pickup, Route 3 to Boulogne [beyond the walls]
30c tax [1½x penalty rate] on unpaid domestic 1x letter (1 July 1854 Tariff)

Uncommon usage of PCs of GCs on ordinary mail:



4 Jan. 1863 (4th day of possible use), BELLEVILLE-LES PARIS/(60) + PC 432



3 June 1864, LA MAISON-BLANCHE/(60) + PC 2170



7 Dec. 1865,
PARIS/PASSY-LES-PARIS
+ PC 2793

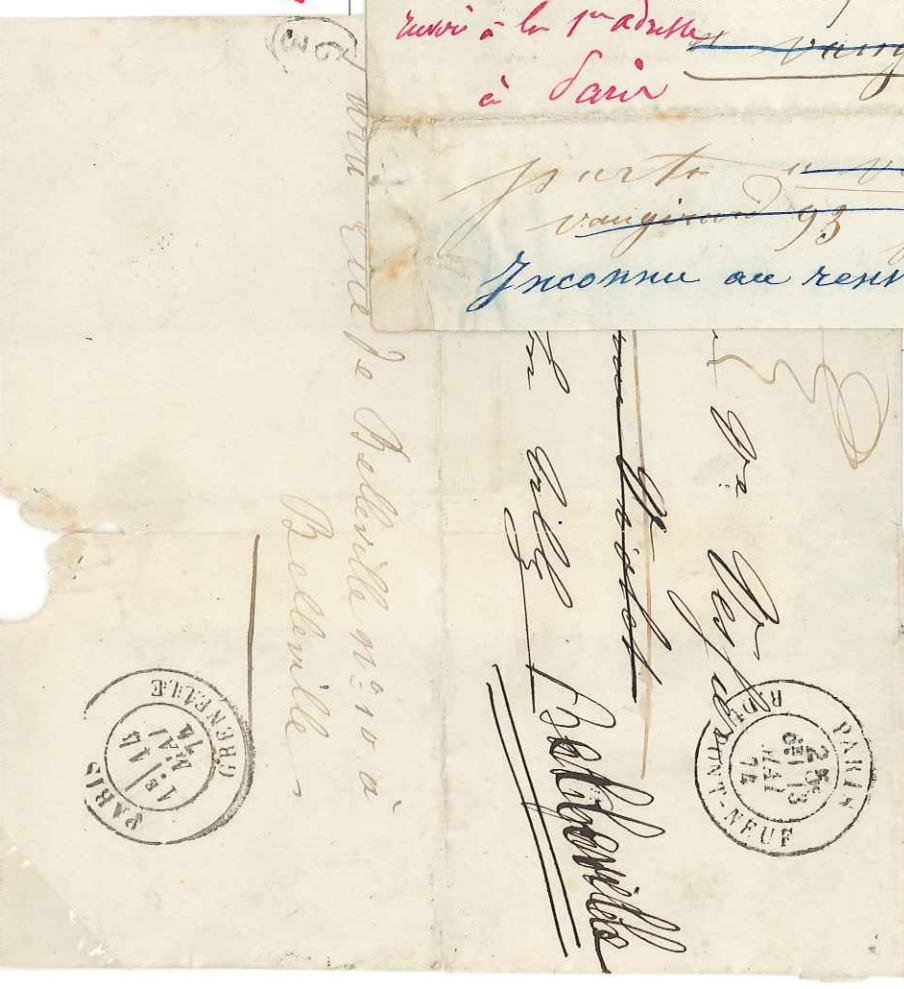
Carrier (facteur) Markings

Individual postmen's markings to indicate unsuccessful attempt(s) at delivery, usually struck alongside handwritten reason for non-delivery.

Paris *facteur* markings date from the 1830s; suburban ones from after 1860.

Paris, 18 April 1856 (tax of 15c on unpaid letter) to Vaugirard [see Unpaid Letters, at end of exhibit]

received on 19th; addressee unknown; several attempts made at delivery, shown by *facteur* markings [black numbers within circles, red ones within rectangles] returned as undeliverable same day to Paris



Paris, 13 May 1874
(tax of 25c on unpaid local letter)
to Grenelle

redirected by carrier mark G/3, from
PARIS/GRENELLE, 14 May,
to addressee at Belleville

Railway Compartment Markings

St. Mandé 9 Jan. 1868.



datelined St. Mandé, 9 Jan. 1868 [sic]
posted the 9th at St. Mandé station of la Varenne-St. Hilaire to Paris line,
receiving its scalloped *convoyeur-station* (undated) cachet;
stamp canceled with Mute Star at Paris

30c = prepaid 1x letter to Baden, via Alsace
backstamps: Paris, 9 Jan. 1869; Strasbourg (10 January) transit; docketed as received on 10th



dropped off at St. Mandé platform
prior to pick up by
BOISSY-St. Leger to Paris train,
where it received *convoyeur-station*
cancels
no backstamps

15c Sage is of Type IID₁, shade of
1887-88 printings;
could have been used after 1888;
last recorded *convoyeur-station*
usage is as late as 1891

Unpaid Letters

Tax usually indicated by handstamped or manuscript décimes or centimes, as shown on many previous pages, and on the final pages.

The first adhesive postage-due stamps were issued in January 1859, primarily for use on short-paid or unpaid local mail in the provinces. Use of these "square" dues stamps in Paris and the suburbs was therefore most uncommon.



5 June 1860, LES TERNES/(60), on typographed 10c (Plate 1) square due taxed 2 (décimes), then retaxed 3 (décimes), as unpaid letter was forwarded within Orne Dept. and then back to Paris

backstamps:: Les Ternes (5th), Paris (6th), Paris-Brest *ambulant* (6th), Alençon (7th, 8th and 9th)--in search of addressee



16 June 1860, LES BATIGNOLLES/(60) on 10c square due (typographed, Plate 1) affixed at destination on Paris letter to mayor of Les Batignolles
10c (non-penalty) Paris local letter rate

Suburban carrier (*facteur*) markings



Paris siege mail:

21 Oct. 1870, PARIS/VAUGIRARD, to Charonne, redirected from Charonne by carrier marking CH/3 in oval [= day's 3rd delivery (3rd brigade)] to La Maison Blanche, where received 22 October

Vaugirard's VA/5 in circle
[= day's 2nd delivery (2nd brigade)], alongside ms. "unknown", on 14 May 1873 Paris letter

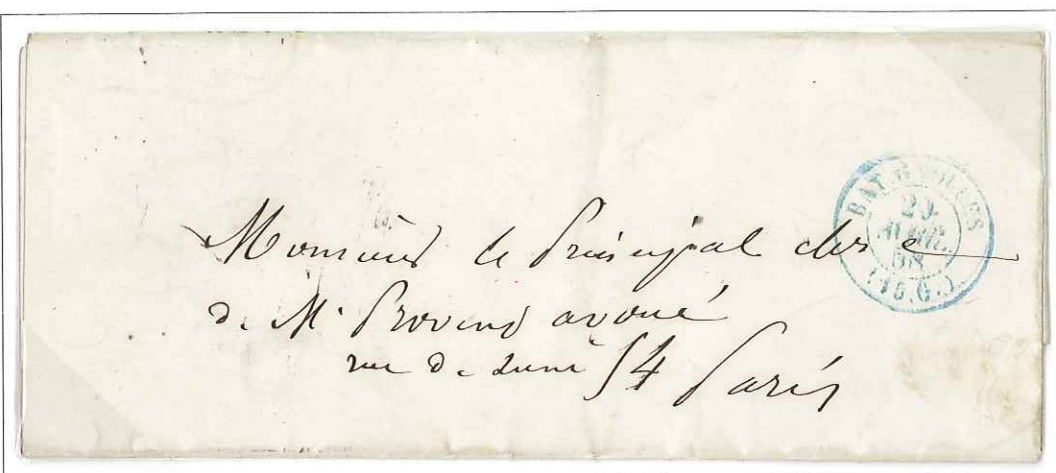
backstamps: PARIS/VAUGIRARD (14 May) and [forwarded to] PARIS/GRENELLE, 15 May arrival



Special date stamps were provided to post offices within Paris and the annexed suburbs showing amount of tax to be collected upon delivery of fully unpaid mail. They predate as well as postdate the square dues.

15c tax

Date stamps issued in 1854 to show the 1½x penalty rate of 15c on unpaid 10c Paris local 1x letters (1 July 1853 Tariff). Generally struck in blue.



29 April 1858,
BATIGNOLLES/(15.C.)

11 Sept. 1855,
BERCY/(15.C.)



1 Jan. 1856,
LA CHAPELLE-St.-DENIS/
(15.C.)

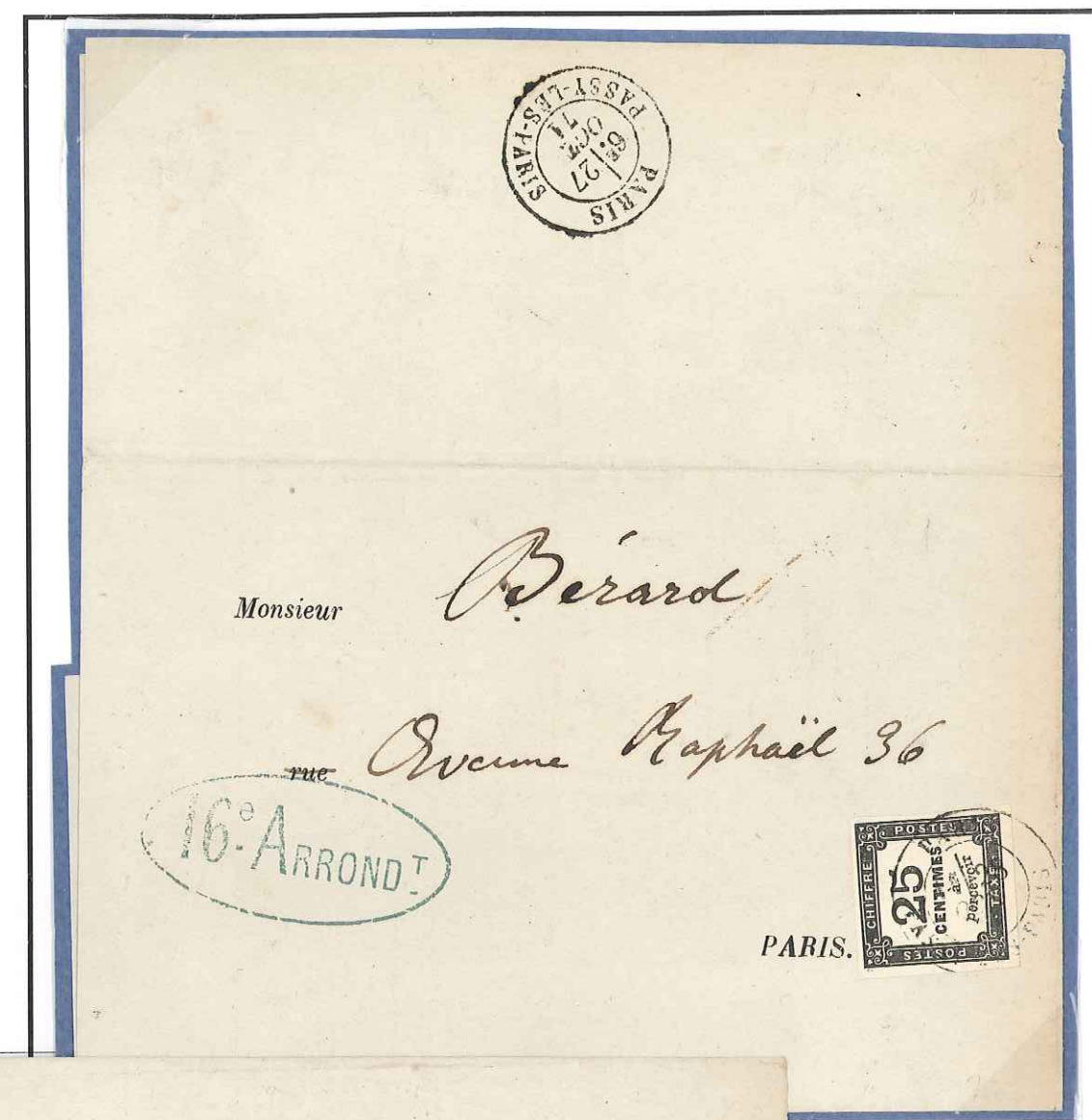


27 Oct. 1871,
PARIS/PASSY-LES-PARIS

25c (Plate 1) square due
[very early use]

on request for
documentation regarding
wartime damages, from
Passy town hall
(in 16th Paris Ward)

*"simple tax" [i.e., no
penalty]
of 25c, affixed the 28th,
being on official mail*



9 Nov. 1871, PARIS/AUTEUIL,
on 25c (Plate 1) square due [early use] on a probably similar form
but with declaration page missing
*same "simple tax" rate; however, could also be construed as a 25c penalty
on unpaid, unofficial 15c-rate mail (1 September 1871 Tariff)*

25c tax

Introduced late 1871 for 25c penalty rate on unpaid 15c Paris local 1x letters (1 September 1871 Tariff).



25c/21 Feb. 1872, PARIS/AUTEUIL; 25c/3 June 1872 /2 /PARIS 2 /VAUGIRARD

40c tax

For the 40c penalty rate on unpaid 25c domestic 1x letters (same tariff).



40c/18 Nov. 1872
2 PARIS 2/
LA VILLETTE

40c/25 March 1873,
PARIS
LES BATIGNOLLES

19 Dec. [1854], LA VILLETTE/(15.C.)
sent unpaid at 15c [1½x tax] to suburban Antony
as a local letter; Antony, being outside the wall,
was considered a non-local destination; therefore
taxed 30c at Paris;
same day Paris and Antony (60) 19 December
backstamps



flimsy-paper letter of 3 Feb. 1871 to daughter
in Paris,
unpaid, hand-carried across the lines,
and posted PARIS/LES BATIGNOLLES;
15c due date stamp
as local letter to Paris

30c tax

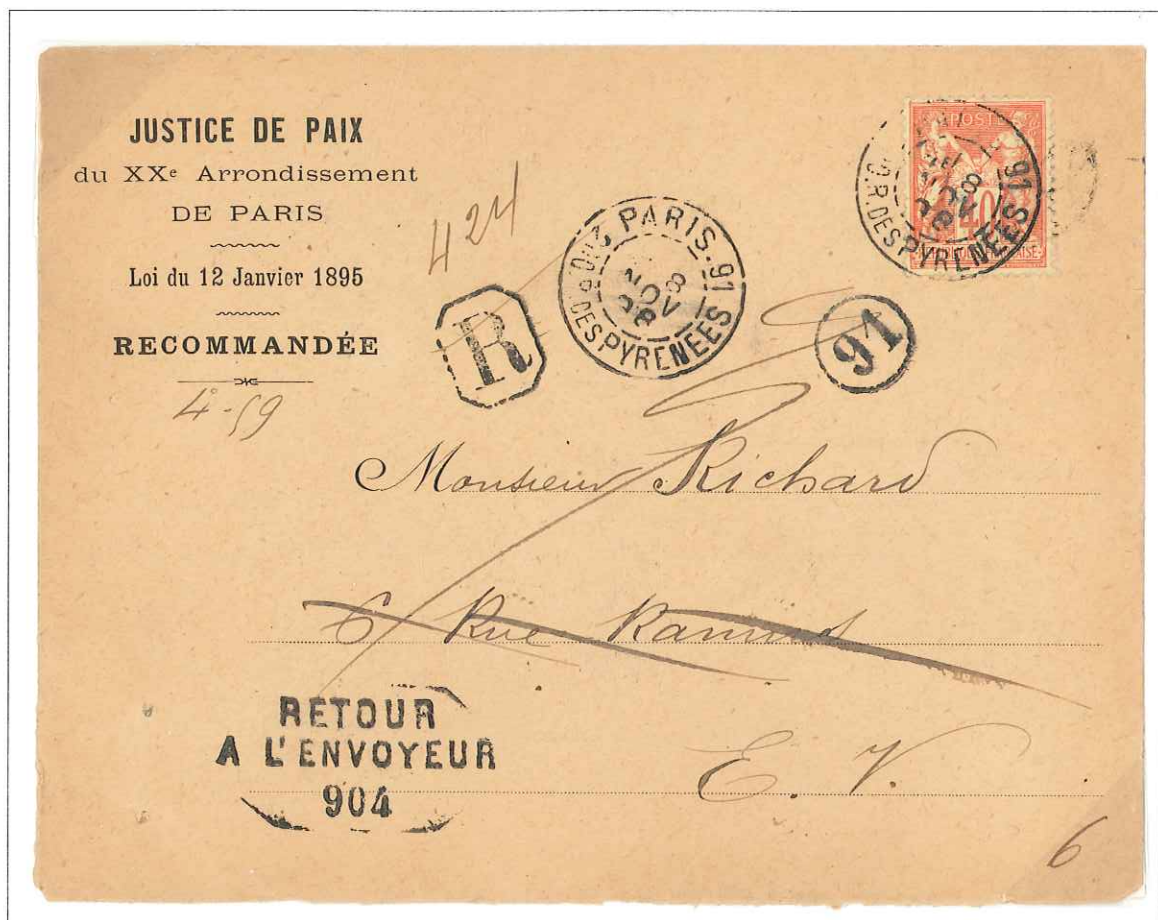
Date stamp issued ca.1867 for the 1½x (30c) penalty rate on unpaid 20c-rate domestic 1x letters
(1 July 1854 Tariff).



30c/16 Dec. 1868, PARIS/LA MAISON-BLANCHE
+ extraneous double-line 30(c) due marking
30c/13 Jan. 1868, PARIS/VAUGIRARD

EPILOGUE

Long after the *gros chiffres* were retired 31 March 1876, that nomenclature was retained by some post offices to denote mail being returned to sender. Why this took place when simpler means, to denote the originating post office, remains a mystery.



8 Nov. 1896 "reutilization" of the old 904 number of Charonne on
 RETURN/TO SENDER/904 marking
 on unable-to-deliver registered Justice of the Peace 1x letter from Paris 91
 (1 July 1892 Tariff)