

POST

THE ADDRESS TO BE WRITTEN ON THIS SIDE.

BY AIR MAIL
PAR AVION



Introduction of Postcard Rates.

PM



Mr. Thomas E. Field.

C/o Mr. D. Greenberg.

292, Lewis Street,

RANGOON,

BURMA.

POST CARD

THE ADDRESS TO BE WRITTEN ON THIS SIDE.

BY AIR MAIL
PAR AVION



Introduction of Postcard Rates.

By Air to Karachi and by Air from Perth.

Mr. Thomas E. Field.

C/o Messrs. Jordan & Moss.

Yarra House,

25/29, Bond Street,

off 353 Flinders Lane,

MELBOURNE,

Australia.



POST CARD.

THE ADDRESS TO BE WRITTEN ON THIS

BY AIR MAIL
PAR AVION



Introduction of postcard rates.

~~Mr. Thomas E. Field.~~

~~Post Restante,~~

~~MBEYA,~~

~~Tanganyika Territory.~~

P.T.O

POST CARD

THE ADDRESS TO BE WRITTEN ON THIS

BY AIR MAIL
PAR AVION



Introduction of postcard rates.

~~UNDELIVERED FOR REASONS STATED~~
~~Mr. Thomas E. Field.~~

~~RETURN TO SENDER~~
~~Post Restante,~~

~~Huddersfield~~
~~Yorks~~
~~KAMPALA,~~
~~Uganda.~~

~~UNDELIVERED FOR REASONS STATED~~

~~UNKNOWN~~ *city*



P.T.O

POST CARD.

THE ADDRESS TO BE WRITTEN ON THIS SIDE

BY AIR MAIL
PAR AVION



Introduction of postcard rates.

Mr. Thomas E. Field.

~~C/o Post Restante,~~ *willand close*
Shelmonthorpe
Mr Studdersfield
England
ATBARA,
~~Anglo Egyptian Sudan.~~



POST CARD

THE ADDRESS TO BE WRITTEN ON THIS SIDE

BY AIR MAIL
PAR AVION



Q 32

Introduction of postcard rates.

Mr. Thomas E. Field.

~~C/o Post Restante,~~
See address on reverse
JUBA,

~~Anglo Egyptian Sudan.~~



POST

THE ADDRESS 27. AUG 1932

BY AIR MAIL
PAR AVION



P 31

Introduction of Postcard rates.

~~Mr. Thomas E. Field~~

~~Post Restante,~~

~~KEETMANSHOOP,~~

~~South West Africa.~~

*not claimed
Return to address
shown on back*



O 31

POST CARD

THE ADDRESS TO BE WRITTEN ON

BY AIR MAIL
PAR AVION



Introduction of Postcard Rates.

By Air from Perth.

Mr. Thomas E. Field.

C/o Messrs. Jordan & Moss.

Yarra House,

25/29, Bond Street,

off 353 Flinders Lane,

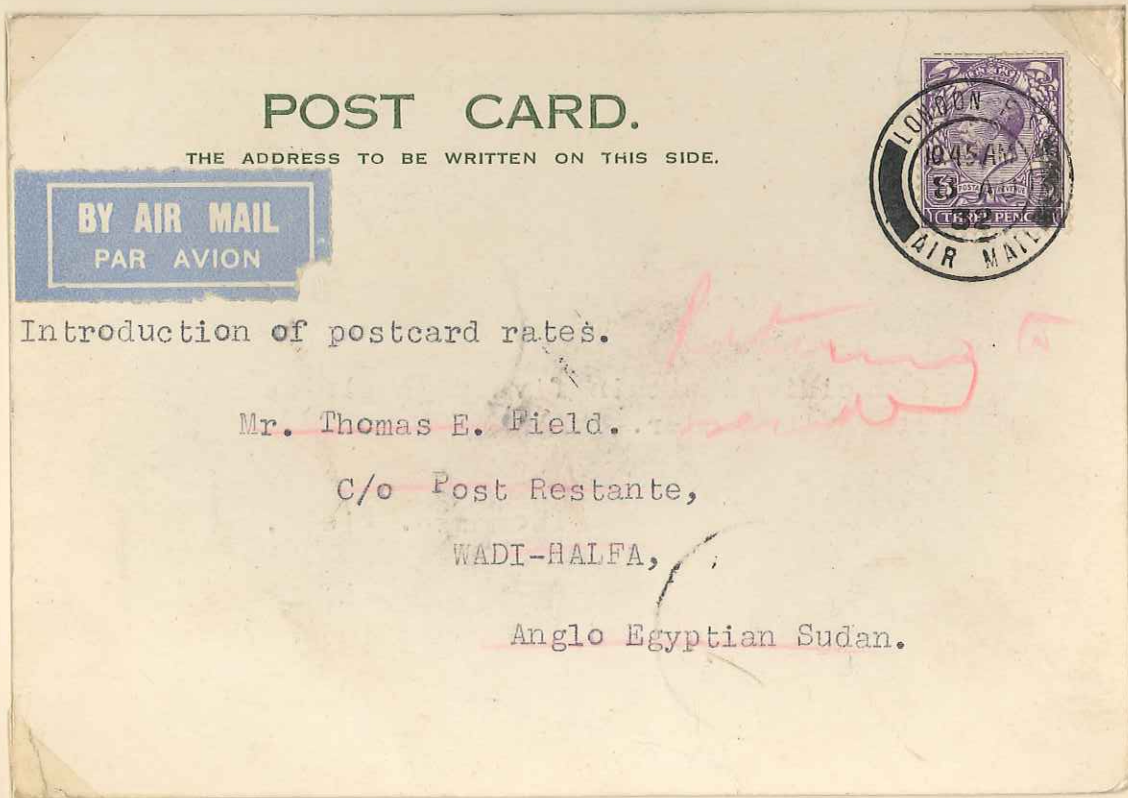
MELBOURNE.

Australia.

IMPERIAL AIRWAYS.
African Route.
INAUGURATION OF POSTCARD RATES.

DISPATCH POSTMARK
LONDON AIR MAIL, 8 AU. 32.

RECEIVING POSTMARK
Sudan Air Mail Wadi-Halfa
14 VIII 32.



NOTES.

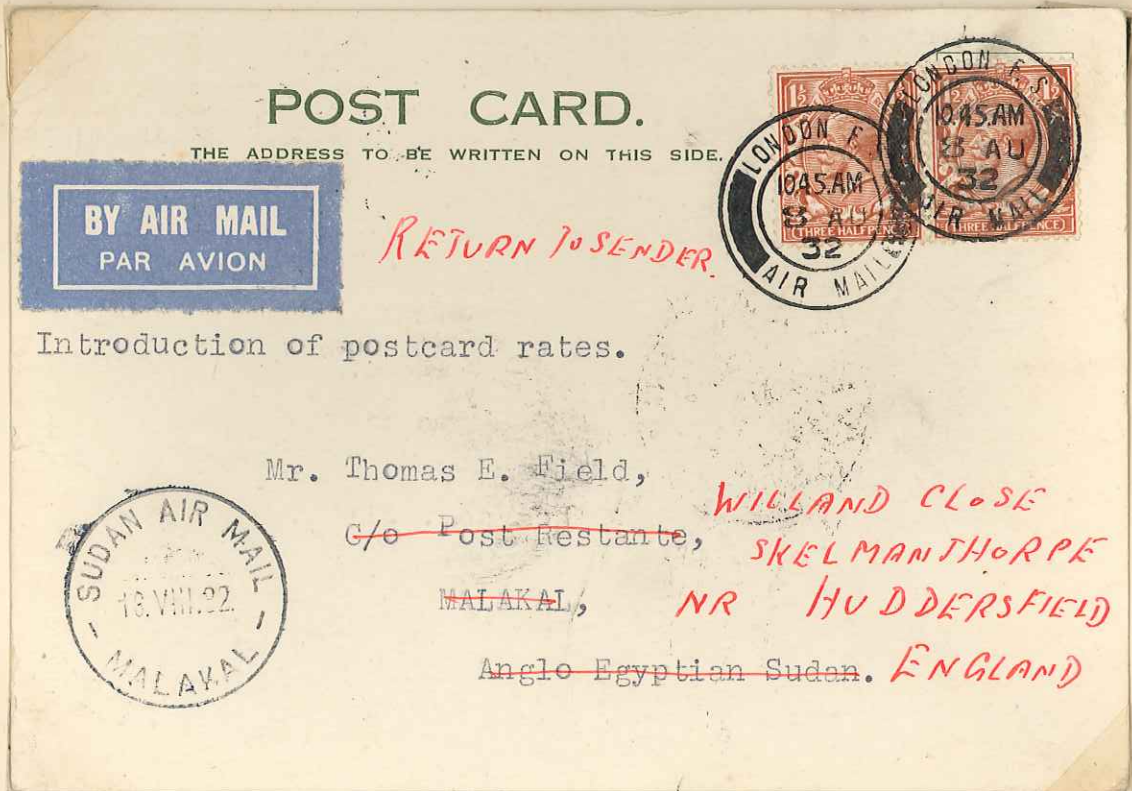
ON AUGUST 8TH, 1932, SPECIAL POSTCARD RATES FOR AIR MAILS FROM GREAT BRITAIN CAME INTO OPERATION FOR THE FIRST TIME.

WHK: Block cypher

IMPERIAL AIRWAYS.
African Route.
INAUGURATION OF POSTCARD RATES.

DISPATCH POSTMARK
LONDON AIR MAIL, 8 AU. 32.

RECEIVING POSTMARK
Sudan Air Mail Malakal 16 VIII 32.



NOTES.

ON AUGUST 8TH, 1932, SPECIAL POSTCARD RATES FOR AIR MAILS FROM GREAT BRITAIN CAME INTO OPERATION FOR THE FIRST TIME.

WMK - block cypher

IMPERIAL AIRWAYS.
African Route.
INAUGURATION OF POSTCARD RATES.

DISPATCH POSTMARK

RECEIVING POSTMARK

LONDON AIR MAIL, 8 AU. 32.

POST CARD.

THE ADDRESS TO BE WRITTEN ON THIS SIDE.

BY AIR MAIL
PAR AVION



Introduction of postcard rates.

Mr. Thomas E. Field

C/o The National Bank of Egypt.

KHARTOUM,

Anglo Egyptian Sudan.

NOTES.

ON AUGUST 8TH, 1932, SPECIAL POSTCARD RATES FOR AIR MAILS FROM GREAT BRITAIN CAME INTO OPERATION FOR THE FIRST TIME.

W.M.W. BLOCK CYpher

IMPERIAL AIRWAYS.

INAUGURATION OF POSTCARD RATES.

DISPATCH POSTMARK
LONDON AIR MAIL, 8 AU. 32.

RECEIVING POSTMARK
Rio de Janeiro 20.VIII. 32.



NOTES.

ON AUGUST 8TH, 1932, SPECIAL POSTCARD RATES FOR AIR MAILS FROM GREAT BRITAIN CAME INTO OPERATION FOR THE FIRST TIME.

STRIP OF 3 STAMPS / LEFT BOTTOM CORNER OF THE SHEET / WITH
IMPERFORATED CONTROL NUMBER P.31

W.M.K.: Black CYPHER

L 41
x 4 U
2000

IMPERIAL AIRWAYS.

INAUGURATION OF POSTCARD RATES.

DISPATCH POSTMARK
LONDON AIR MAIL, 8 AU. 32.

RECEIVING POSTMARK

POST CARD.

THE ADDRESS TO BE WRITTEN ON THIS SIDE.

BY AIR MAIL
PAR AVION



Introduction of Postcard Rates.

Mr. Thomas E. Field.

Post Restante,

~~LIMASSOL,~~
Cyprus.

Willand Close,
Melmanthorpe
N? Huddersfield
England.

NOTES.

ON AUGUST 8TH, 1932, SPECIAL POSTCARD RATES FOR AIR MAILS FROM GREAT BRITAIN CAME INTO OPERATION FOR THE FIRST TIME.

WHR: BLOCK CYPHER

IMPERIAL AIRWAYS.
African Route.
INAUGURATION OF POSTCARD RATES.

DISPATCH POSTMARK
LONDON AIR MAIL, 8 AU. 32.

RECEIVING POSTMARK
Alexandria Par Avion 13 Au 32.
Assyut 14 Au 32.



NOTES.

ON AUGUST 8TH, 1932, SPECIAL POSTCARD RATES FOR AIR MAILS FROM GREAT BRITAIN CAME INTO OPERATION FOR THE FIRST TIME.

W.M.K. BLOCK CYPHER

IMPERIAL AIRWAYS.
African Route.
INAUGURATION OF POSTCARD RATES.

DISPATCH POSTMARK
LONDON AIR MAIL, 8 AU. 32.

RECEIVING POSTMARK
Cairo Par Avion 13 Au. 32.



NOTES.

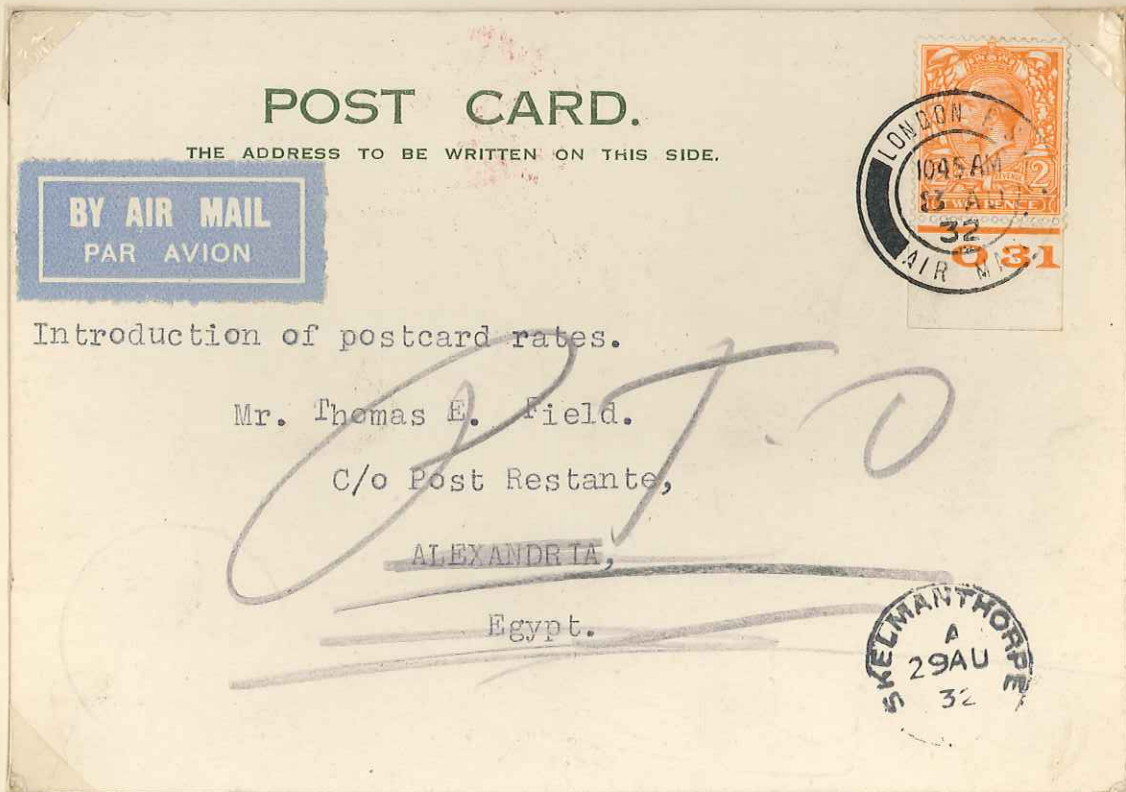
ON AUGUST 8TH, 1932, SPECIAL POSTCARD RATES FOR AIR MAILS FROM GREAT BRITAIN CAME INTO OPERATION FOR THE FIRST TIME.

W.H.K. Block cypher

IMPERIAL AIRWAYS.
African Route.
INAUGURATION OF POSTCARD RATES.

DISPATCH POSTMARK
LONDON AIR MAIL, 8 AU. 32.

RECEIVING POSTMARK
Alexandria Par Avion 13 Au 32.



NOTES.

ON AUGUST 8TH, 1932, SPECIAL POSTCARD RATES FOR AIR MAILS FROM GREAT BRITAIN CAME INTO OPERATION FOR THE FIRST TIME.

SINGLE STAMP WITH CONTROL NUMBER 031 IMPERFORATED

WNR BLOCK CYpher

WNR
UX 6

IMPERIAL AIRWAYS.

INAUGURATION OF POSTCARD RATES.

DISPATCH POSTMARK

Holyhead. 8 AU. 32.

RECEIVING POSTMARK

Assuan 15 Au 32.



NOTES.

ON AUGUST 8TH, 1932, SPECIAL POSTCARD RATES FOR AIR MAILS FROM GREAT BRITAIN CAME INTO OPERATION FOR THE FIRST TIME.

WPK. BULK VSPGR

IMPERIAL AIRWAYS.
African Route.
INAUGURATION OF POSTCARD RATES.

DISPATCH POSTMARK
LONDON AIR MAIL, 8 AU. 32.

RECEIVING POSTMARK
Alexandria Par Avion 13 Au 32.
LuqSor 15 Au 32.



NOTES.

ON AUGUST 8TH, 1932, SPECIAL POSTCARD RATES FOR AIR MAILS FROM GREAT BRITAIN CAME INTO OPERATION FOR THE FIRST TIME.

WHIS BLOCK CYPHER

IMPERIAL AIRWAYS.

INAUGURATION OF POSTCARD RATES.

DISPATCH POSTMARK

LONDON AIR MAIL, 8 AU. 32.

RECEIVING POSTMARK

Paris, Gare du Nord Avion
8. VIII. 1932.
Athens 10. VIII. 32.

POST CARD.

THE ADDRESS TO BE WRITTEN ON THIS

BY AIR MAIL
PAR AVION



Introduction of postcard rates.

Mr. Thomas E. Field.

C/o Mr. J. Daglaris,

Rue Vassilikis 11,

ATHENS,

Greece.

NOTES.

ON AUGUST 8TH, 1932, SPECIAL POSTCARD RATES FOR AIR MAILS FROM GREAT BRITAIN CAME INTO OPERATION FOR THE FIRST TIME.

SINGLE STAMP WITH INTEGRATED CONTROL NUMBER N30

Wmk Black CYPHER

Nov 21/32

IMPERIAL AIRWAYS.

INAUGURATION OF POSTCARD RATES.

DISPATCH POSTMARK
LONDON AIR MAIL, 8 AU. 32.

RECEIVING POSTMARK
Paris, Gare du Nord Avion
8. VIII. 1932.



NOTES.

ON AUGUST 8TH, 1932, SPECIAL POSTCARD RATES FOR AIR MAILS FROM GREAT BRITAIN CAME INTO OPERATION FOR THE FIRST TIME.

WPK BLACK COPY

IMPERIAL AIRWAYS.

INAUGURATION OF POSTCARD RATES.

DISPATCH POSTMARK
LONDON AIR MAIL, 8 AU. 32.

RECEIVING POSTMARK
Karachi 20 Aug 32.



NOTES.

ON AUGUST 8TH, 1932, SPECIAL POSTCARD RATES FOR AIR MAILS FROM GREAT BRITAIN CAME INTO OPERATION FOR THE FIRST TIME.

with black cover

IMPERIAL AIRWAYS.

INAUGURATION OF POSTCARD RATES.

DISPATCH POSTMARK

LONDON AIR MAIL, 8 AU. 32.

RECEIVING POSTMARK

PALESTINE



NOTES.

ON AUGUST 8TH, 1932, SPECIAL POSTCARD RATES FOR AIR MAILS FROM GREAT BRITAIN CAME INTO OPERATION FOR THE FIRST TIME.

with blue cypher

IMPERIAL AIRWAYS.

INAUGURATION OF POSTCARD RATES.

DISPATCH POSTMARK
LONDON AIR MAIL, 8 AU. 32.

RECEIVING POSTMARK
Singapore 20 Aug 32.



NOTES.

ON AUGUST 8TH, 1932, SPECIAL POSTCARD RATES FOR AIR MAILS FROM GREAT BRITAIN CAME INTO OPERATION FOR THE FIRST TIME.

W.M.K. Block cypher

IMPERIAL AIRWAYS.
African Route.
INAUGURATION OF POSTCARD RATES.

DISPATCH POSTMARK
LONDON AIR MAIL, 8 AU. 32.

RECEIVING POSTMARK



NOTES.

ON AUGUST 8TH, 1932, SPECIAL POSTCARD RATES FOR AIR MAILS FROM GREAT BRITAIN CAME INTO OPERATION FOR THE FIRST TIME.

*PAIR IN BOTTOM LEFT CORNER OF THE SHEET WITH IMPERFORATED
CONTROL NUMBER P 21*

*v x 6
Nov 0*

IMPERIAL AIRWAYS.
African Route.
INAUGURATION OF POSTCARD RATES.

DISPATCH POSTMARK
LONDON AIR MAIL, 8 AU. 32.

RECEIVING POSTMARK



NOTES.

ON AUGUST 8TH, 1932, SPECIAL POSTCARD RATES FOR AIR MAILS FROM GREAT BRITAIN CAME INTO OPERATION FOR THE FIRST TIME.

PAIR IN BOTTOM LEFT CORNER WITH IMPERIALATED CONTROL NUMBER A 24

ONE - BLUE CYPHER

NYZ

IMPERIAL AIRWAYS.
African Route.
INAUGURATION OF POSTCARD RATES.

DISPATCH POSTMARK

RECEIVING POSTMARK

LONDON AIR MAIL, 8 AU. 32.



NOTES.

ON AUGUST 8TH, 1932, SPECIAL POSTCARD RATES FOR AIR MAILS FROM GREAT BRITAIN CAME INTO OPERATION FOR THE FIRST TIME.

1/2 SINGLE + 3 SINGLES BOTH WITH IMPERFORATED CONTROL NUMBERS 130 937

WHK Block CYPHER

NY2

*NY2
UX12*

IMPERIAL AIRWAYS.
African Route.
INAUGURATION OF POSTCARD RATES.

DISPATCH POSTMARK
LONDON AIR MAIL, 8 AU. 32.

RECEIVING POSTMARK
Victoria West 21 Aug 32.



NOTES.

ON AUGUST 8TH, 1932, SPECIAL POSTCARD RATES FOR AIR MAILS FROM GREAT BRITAIN CAME INTO OPERATION FOR THE FIRST TIME.

SINGLE STAMP WITH IMPROVED CONTROL NUMBER T.22

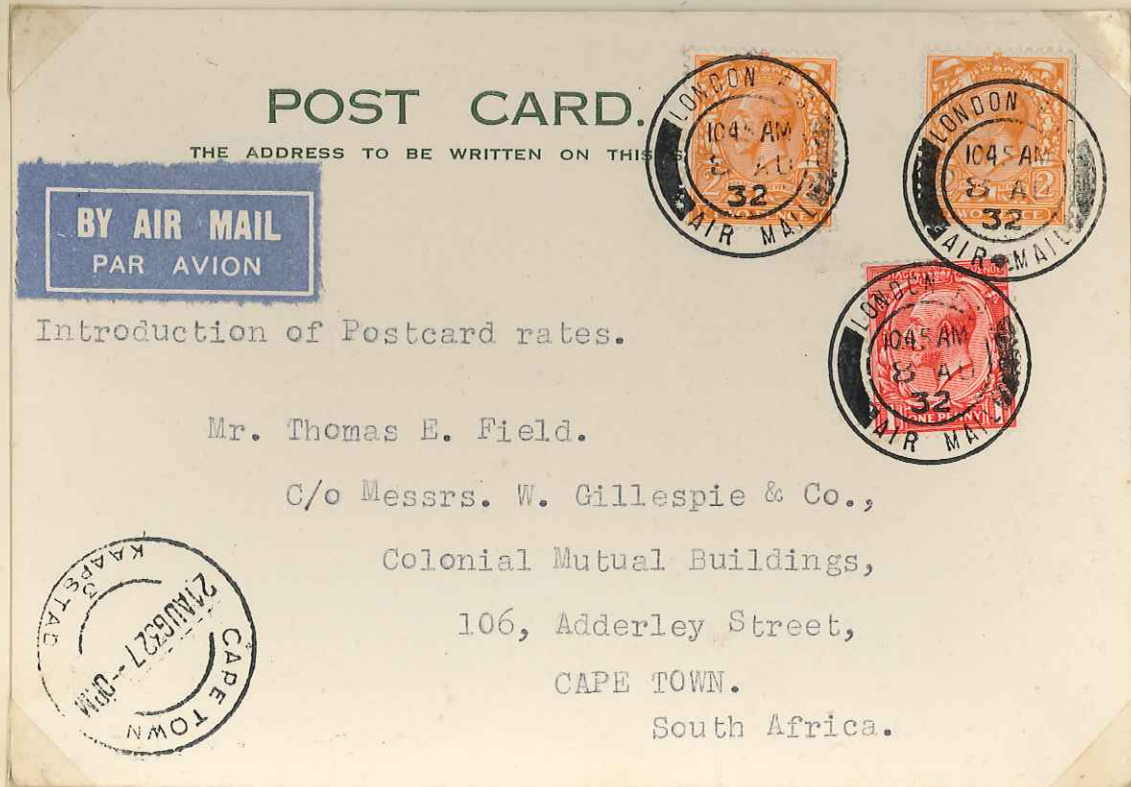
WHK ROYAL CYPRUS

619
N73

IMPERIAL AIRWAYS.
African Route.
INAUGURATION OF POSTCARD RATES.

DISPATCH POSTMARK
LONDON AIR MAIL, 8 AU. 32.

RECEIVING POSTMARK
Cape Town 21 Aug 32.



NOTES.

ON AUGUST 8TH, 1932, SPECIAL POSTCARD RATES FOR AIR MAILS FROM GREAT BRITAIN CAME INTO OPERATION FOR THE FIRST TIME.

WHR - Block 441111

IMPERIAL AIRWAYS.
African Route.
INAUGURATION OF POSTCARD RATES.

DISPATCH POSTMARK
LONDON AIR MAIL, 8 AU. 32.

RECEIVING POSTMARK
Upington 22 Aug 32.



NOTES.

ON AUGUST 8TH, 1932, SPECIAL POSTCARD RATES FOR AIR MAILS FROM GREAT BRITAIN CAME INTO OPERATION FOR THE FIRST TIME.

By South West Africa Feeder Service in addition to Imperial Airways.

Bottom left corner pair, with perforated control number P31

*N414
JY3*

IMPERIAL AIRWAYS.
African Route.
INAUGURATION OF POSTCARD RATES.

DISPATCH POSTMARK
LONDON AIR MAIL, 8 AU. 32.

RECEIVING POSTMARK
Mariental 22 Aug 32.



NOTES.

ON AUGUST 8TH, 1932, SPECIAL POSTCARD RATES FOR AIR MAILS FROM GREAT BRITAIN CAME INTO OPERATION FOR THE FIRST TIME.

By South West Africa Feeder Service in addition to Imperial Airways.

UPPER IN
BOTTOM LEFT CORNER OF THE SHEET WITH IMPERFORATED CONTROL NUMBER 031

WNR Block CYPER

N
036

IMPERIAL AIRWAYS.
African Route.
INAUGURATION OF POSTCARD RATES.

DISPATCH POSTMARK
LONDON AIR MAIL, 8 AU. 32.

RECEIVING POSTMARK
Air Mail Windhoek-Kimberley 22 8 32.



NOTES.

ON AUGUST 8TH, 1932, SPECIAL POSTCARD RATES FOR AIR MAILS FROM GREAT BRITAIN CAME INTO OPERATION FOR THE FIRST TIME.

By South West Africa Feeder Service in addition to Imperial Airways.

PAIR IN BOTTOM LEFT CORNER OF THE SHEET WITH IMPERFORATED CONTROL NUMBER P31

WAK Black CYPRER

*N
046*

IMPERIAL AIRWAYS.
African Route.
INAUGURATION OF POSTCARD RATES.

DISPATCH POSTMARK

LONDON AIR MAIL, 8 AU. 32.

RECEIVING POSTMARK



NOTES.

ON AUGUST 8TH, 1932, SPECIAL POSTCARD RATES FOR AIR MAILS FROM GREAT BRITAIN CAME INTO OPERATION FOR THE FIRST TIME.

Evidently received by the Standard Bank of South Africa, Bulawayo, on August 22nd.

WHR Block Cipher

N
0x6

IMPERIAL AIRWAYS.
African Route.
INAUGURATION OF POSTCARD RATES.

DISPATCH POSTMARK

RECEIVING POSTMARK

LONDON AIR MAIL, 8 AU. 32.



NOTES.

ON AUGUST 8TH, 1932, SPECIAL POSTCARD RATES FOR AIR MAILS FROM GREAT BRITAIN CAME INTO OPERATION FOR THE FIRST TIME.

Single stamp with perforated central D14

with simple cipher

*Uf 20
U Y 20*

IMPERIAL AIRWAYS.
African Route.
INAUGURATION OF POSTCARD RATES.

DISPATCH POSTMARK
LONDON AIR MAIL, 8 AU. 32.

RECEIVING POSTMARK
Mpika 19 Aug 1932.



NOTES.

ON AUGUST 8TH, 1932, SPECIAL POSTCARD RATES FOR AIR MAILS FROM GREAT BRITAIN CAME INTO OPERATION FOR THE FIRST TIME.

IMPERIAL AIRWAYS.
African Route.
INAUGURATION OF POSTCARD RATES.

DISPATCH POSTMARK
LONDON AIR MAIL, 8 AU. 32.

RECEIVING POSTMARK
Broken Hill 19 Aug 32.



NOTES.

ON AUGUST 8TH, 1932, SPECIAL POSTCARD RATES FOR AIR MAILS FROM GREAT BRITAIN CAME INTO OPERATION FOR THE FIRST TIME.

Pair in Bottom Left corner of the sheet with Imp. Control P31

Block cypher

*U
UXG*

IMPERIAL AIRWAYS.
African Route.
INAUGURATION OF POSTCARD RATES.

DISPATCH POSTMARK
LONDON AIR MAIL, 8 AU. 32.

RECEIVING POSTMARK
Moshi 18 Au 1932.



NOTES.

ON AUGUST 8TH, 1932, SPECIAL POSTCARD RATES FOR AIR MAILS FROM GREAT BRITAIN CAME INTO OPERATION FOR THE FIRST TIME.

Single stamp WITH IMPERATOR CONTROL R29

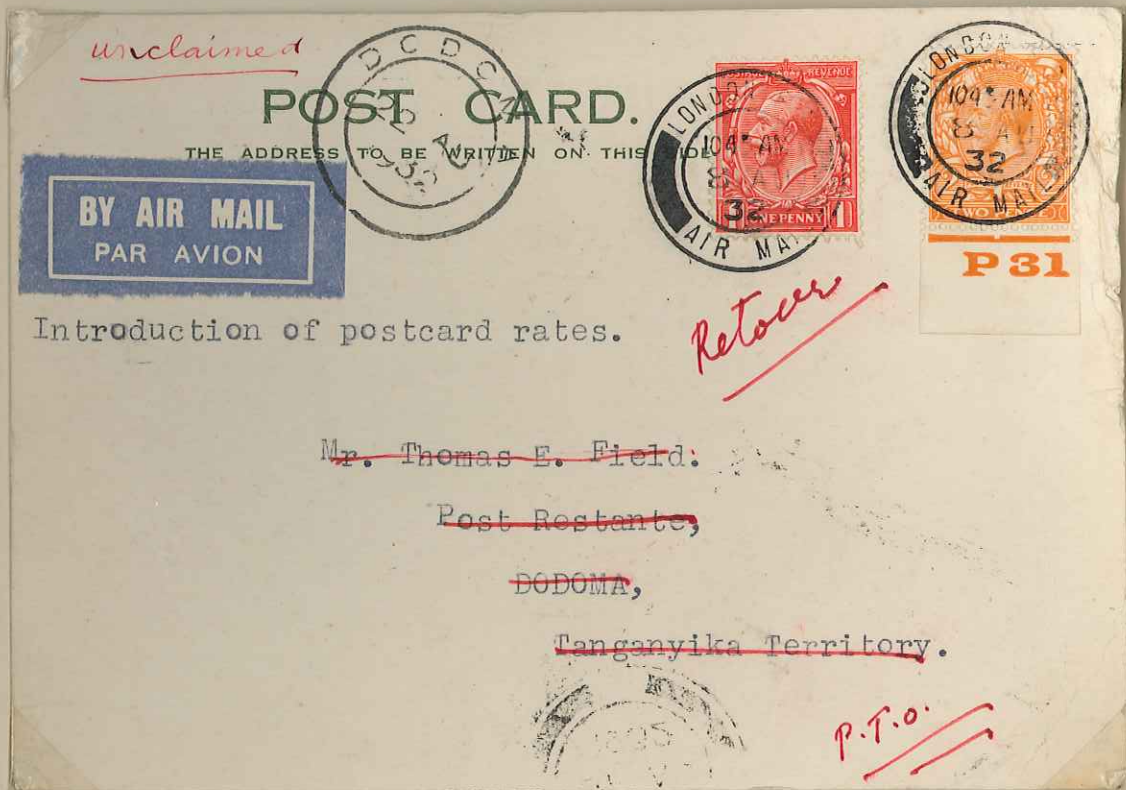
WHR BLOCK CYPHER GVIR

px2
0x10

IMPERIAL AIRWAYS.
African Route.
INAUGURATION OF POSTCARD RATES.

DISPATCH POSTMARK
LONDON AIR MAIL, 8 AU. 32.

RECEIVING POSTMARK
Dodoma 18 Au 1932.



NOTES.

ON AUGUST 8TH, 1932, SPECIAL POSTCARD RATES FOR AIR MAILS FROM GREAT BRITAIN CAME INTO OPERATION FOR THE FIRST TIME.

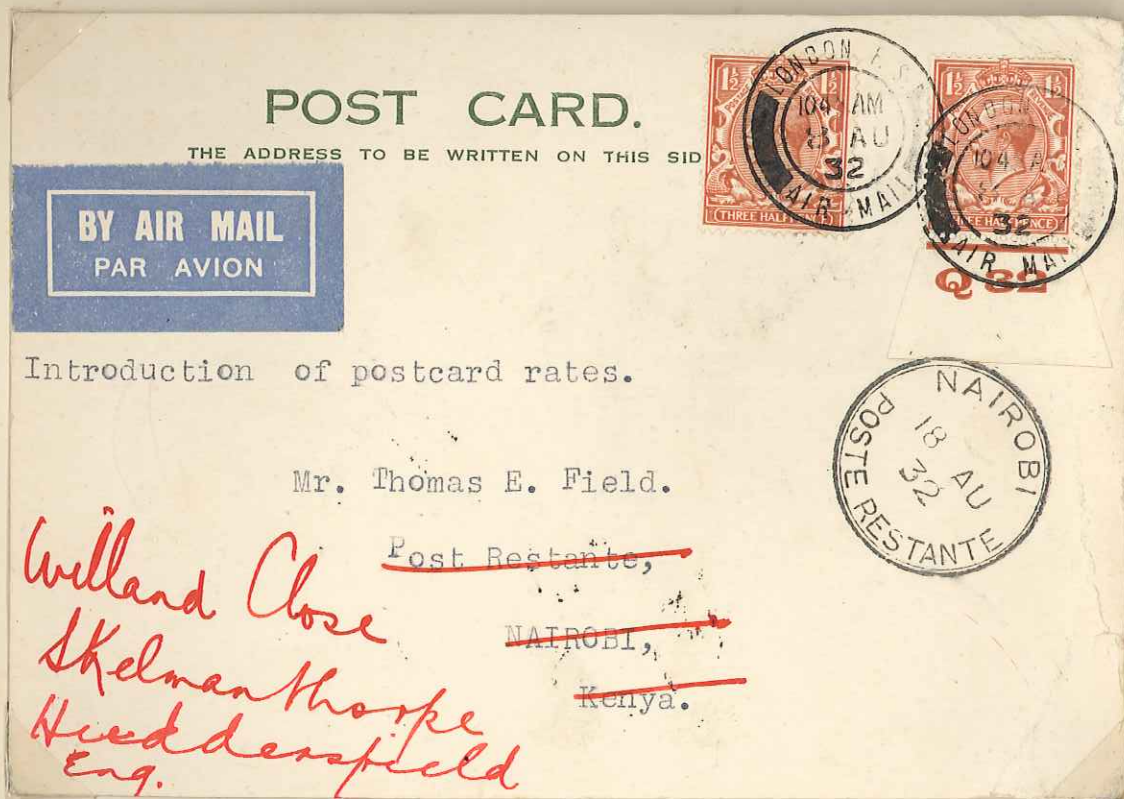
*Single stamp with Imp. Control P31
with Block cypher*

*Dx 35
J76*

IMPERIAL AIRWAYS.
African Route.
INAUGURATION OF POSTCARD RATES.

DISPATCH POSTMARK
LONDON AIR MAIL, 8 AU. 32.

RECEIVING POSTMARK
Nairobi 17 Au 32.



NOTES.

ON AUGUST 8TH, 1932, SPECIAL POSTCARD RATES FOR AIR MAILS FROM GREAT BRITAIN CAME INTO OPERATION FOR THE FIRST TIME.

The first dispatch of postcards at special rates coincided with the inauguration of the all Air Feeder Service from Nairobi to the Coastal towns in Tanganyika. The rare postcard flown in this way to Dar-es-Salaam will be found in the separate collection of these Feeder Services.

*Single Stamp with Ink Control Q32
with Block system*

*W. X. 1. 1
083*

IMPERIAL AIRWAYS.
African Route.
INAUGURATION OF POSTCARD RATES.

DISPATCH POSTMARK
LONDON AIR MAIL, 8 AU. 32.

RECEIVING POSTMARK
Kisumu Kenya 21 Au 32.



NOTES.

ON AUGUST 8TH, 1932, SPECIAL POSTCARD RATES FOR AIR MAILS FROM GREAT BRITAIN CAME INTO OPERATION FOR THE FIRST TIME.

As mail arrived at Nairobi on August 17th it is thought that the Kisumu date on this card must be the date of re-forwarding.

Pair in bottom left corner of the sheet with exp. control Q32

*Nx65
Ux3*