

THE WARREN EXPEDITION
(MILITARY TELEGRAPHS)

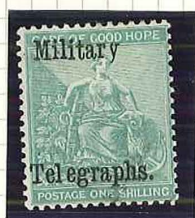


Q1
 24 MAR
 1885



SK
 20 MAR
 1885

The 6d and 1/- stamps were soon exhausted and recourse was made to Cape stamps which were overprinted "Military Telegraphs". Stamps used were the 6d purple of the 1884 issue, Lmk. 'Cabled Anchor' and the 1/- green of the 1864 issue, Lmk. 'Crown over CC'.



TRUNGS
 BECHUANALAND
 MY 24 9
 (COMPLIANCE?)

23.6.86
 BROKEN'S AND 'G'



PESA 11002

Manuscript 1/- on 5/-

Stock of the 'Unappropriated Dies' overprinted 'Military Telegraphs' was soon exhausted. Resource was made to surcharging some of the least used values by pen and black ink. These provisionals were used only in July and August, 1886.

Army Form C 377 **ON HER MAJESTY'S SERVICE.**
 (late W.O. Form 1511.) **MILITARY TELEGRAPH.—IMMEDIATE.**

J.B.
R L R

Sent out at () H. () Min. m. Signature _____
 Date _____
 Received at () H. () Min m. Signature _____
 Date _____

Forms /c 377/2

Example of Military Telegraph envelope used during the Warren Expedition.

The Military Telegraph form used during the Expedition continued to be used for normal inter-office purposes after the expeditionary force had left the territory.

Army Book 295A.

MILITARY TELEGRAPHS.

No. of Message _____

Prefix _____ Code _____	Figures _____ m. Letters _____ m.	Words.	Sent _____ m.	For Stamps or Signature of Sender.	Dated Stamp
Office of Origin and Service Instructions.		Charge.	At _____ m.	<i>Copy</i>	<i>17/5/89</i> of Office.
			To _____		
From <i>pmg</i> <i>bybury</i>			To <i>Postmaster</i> <i>Lanark</i>		
<i>What-</i>	<i>is</i>	<i>extra</i>	<i>number</i>	<i>required</i>	
<i>for</i>	<i>can</i>	<i>you</i>	<i>get-</i>	<i>relieved</i>	
<i>man</i>	<i>&</i>	<i>at-</i>	<i>what-</i>	<i>rate</i>	
<i>for</i>	<i>the</i>	<i>trip</i>	<i>reply</i>	<i>—</i>	