



1872
12, 13



1872
14, 15



1872

920

500

60

100



LOT PARTIALLY SCANNED

Due to the size of this lot, only selected items are shown

LOT PARTIELLEMENT SCANNÉ

Du à la taille de ce lot, ceci est une selection

LOS IST NUR TEILWEISE GESCANNT

Aufgrund des Umfangs dieses Loses werden nur ausgewählte
Stücke gezeigt



1872
23-28 1872
46-22





1875/1900





72c
72c

61500
←



180



1905/11

306

Handwritten numbers on pink labels: 96, 97, 98, 99, 100, 101, 102, 103, 104, 105, 106, 107, 108, 109, 110, 111, 112, 113, 114, 115, 116, 117, 118, 119, 120, 121, 122, 123, 124, 125, 126, 127, 128, 129, 130, 131, 132, 133, 134, 135, 136, 137, 138, 139, 140, 141, 142, 143, 144, 145, 146, 147, 148, 149, 150, 151, 152, 153, 154, 155, 156, 157, 158, 159, 160, 161, 162, 163, 164, 165, 166, 167, 168, 169, 170, 171, 172, 173, 174, 175, 176, 177, 178, 179, 180, 181, 182, 183, 184, 185, 186, 187, 188, 189, 190, 191, 192, 193, 194, 195, 196, 197, 198, 199, 200.



97
B
4
D



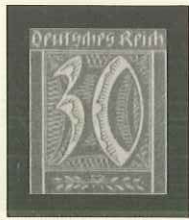


























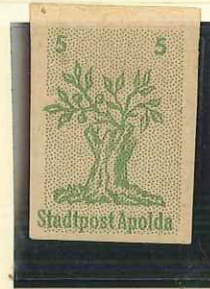


Apolda



130

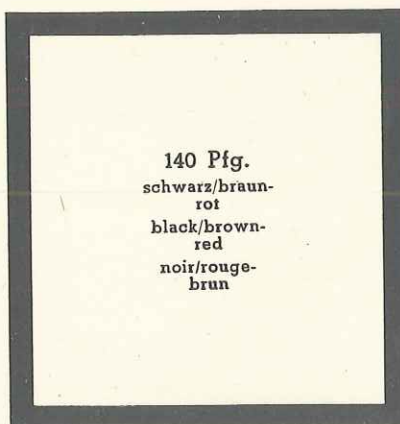
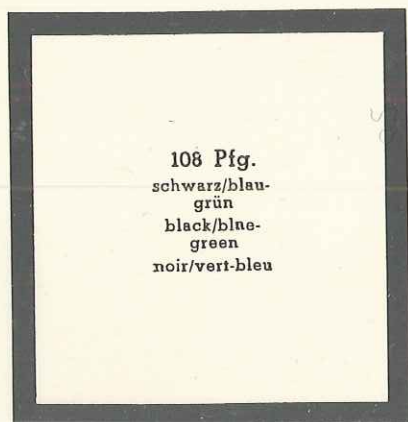
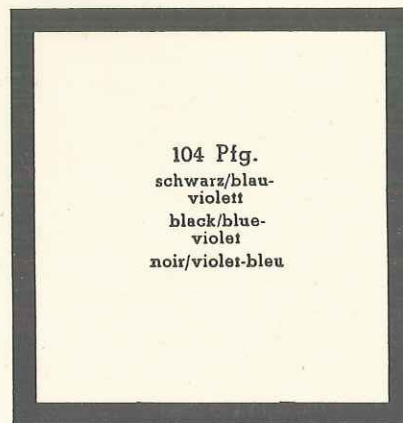
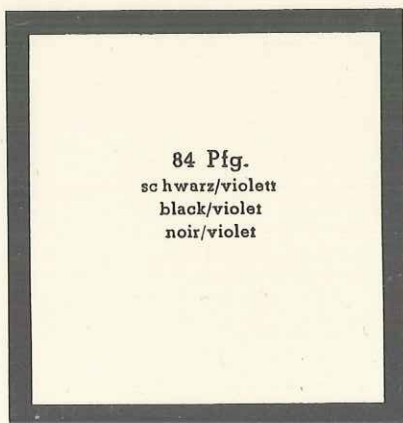
Barsinghausen



Kat.-Nr. VII U *
Apolda:

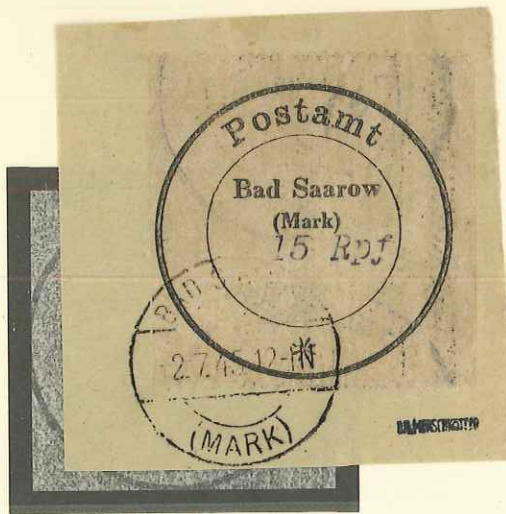


BAD NAUHEIM



Bad Saarow

FR 5001-	FR 11001-
No 3-6	No 142
**	**
○	○
*	*



COTTBUS



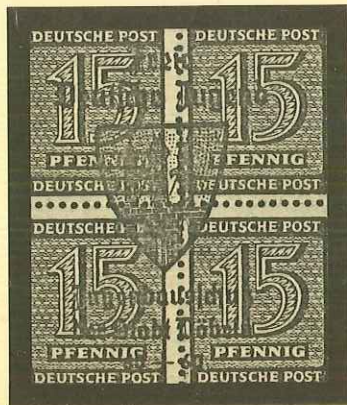
COTTBUS



Döbeln



Kat.-Nr. 1476
Döbeln **



Falkensee



Kat.-Nr. IV - VI **   net Fr. 25.-
Eilenburg:



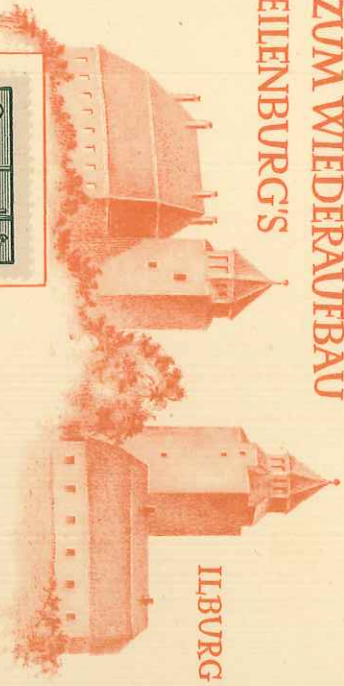
Kat.-Nr. I - III **   net Fr. 9.-
Dessau:



Kat.-Nr. I - III **   net Fr. 25.-
Eilenburg



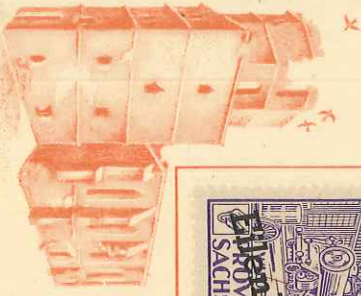
ZUM WIEDERAUFBAU
EILENBURG'S



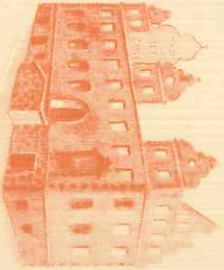
ILBURG



RM



NICOLAIKIRCHE

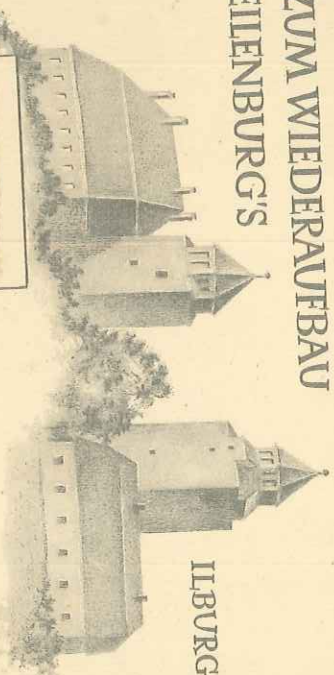


RATHAUS

M 301/1394

I-III 25.-

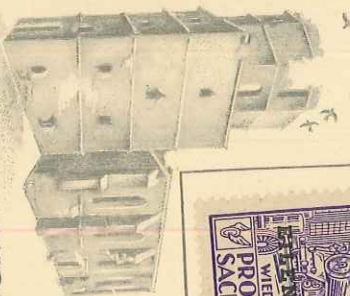
ZUM WIEDERAUFBAU
EILENBURG'S



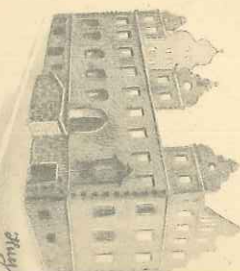
ILBURG



RM



NICOLAIKIRCHE



RATHAUS

M 301/1394

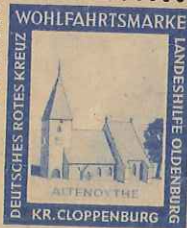
IV-VI 25.-

WOHLFAHRTSBLOCK

DEUTSCHES ROTES KREUZ



LANDESHILFE OLDENBURG



PREIS 2,50 RM

WOHLFAHRTSBLOCK

DEUTSCHES ROTES KREUZ



LANDESHILFE OLDENBURG



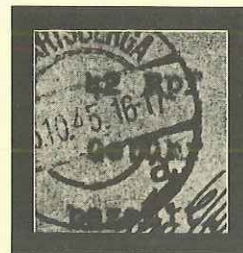
PREIS 2,50 RM

Eckartsberga

6 Pfg.
grün
green
vert

12 Pfg.
rosa
rose
rose

24 Pfg.
hellbraun
pale brown
brun clair



Finsterwalde



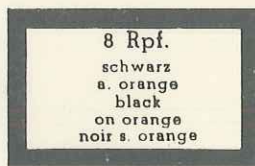
FRANKENAU



FRANKENBERG



FREUDENSTADT



FREDERSDORF



FREDERSDORF



FREDERSDORF



Glauchau



Kal-Nr. 1-18
Glauchau: + 56
✱
✱



GLAUCHAU



15 a 4 (Pfg.)
graublau
grey-blue
bleu-gris



15 a 24 (Pfg.)
gelbbraun
yellow-brown
brun-jaune

15 a 30 (Pfg.)
oliv
olive
olive



25 a 6 (Pfg.)
violett
violet
violet

25 a 8 (Pfg.)
rotorange
red-orange
orange-rouge

25 a 10 (Pfg.)
dunkelbraun
dark brown
brun foncé



25 a 15 (Pfg.)
lilabraun
lilac-brown
brun-lilas

25 a 20 (Pfg.)
blau
blue
bleu

25 a 30 (Pfg.)
olivgrün
olive-green
vert-olive

25 a 40 (Pfg.)
purpur
purple
pourpre

25 a 50 (Pfg.)
blaugrün
blue-green
vert-bleu



13
9

13
20

27

17

12

GÖRLITZ



6 Pfg.
violett
violett
violett
graues Papier



6 Pfg.
violett
violett
violett
graues Papier
spargummi



62

GOTTLEUBA



10 (Pfg.)
dunkelbraun
dark brown
brun foncé
Stahlschich

12 (Pfg.)
karminrot
carmine-red
rouge-carmine
Buchdruck

GROSSRÄSCHEN



10 (Pfg.)
violett/rot
a. gelb
violet/red
on yellow
violett/rouge
s. jaune

12 (Pfg.)
violett/rot
a. grün
violet/red
on green
violett/rouge
s. vert



42

Großräschen

Kat.-Nr. 31 - 42
Großräschen: *



Kat.-Nr. 13AI-24AI
Großräschen: *

GROSSRÄSCHEN

12 Pfg.
schwarz a . grün
blac on green
noir s. vert

24 Pfg.
schwarz a. lila
blac on lilac
noir s. lilas

40 Pfg.
schwarz a. lila
blac on lilac
noir s. lilas

10 Pfg.
orange

30 Pfg.
orange

30 Pfg.
rosa
pink
rose



6+24 (Pfg.)
rotbraun
red-brown
brun-rouge

12+28 (Pfg.)
dunkelgrün
dark green
vert foncé

24+36 (Pfg.)
grauviolett
grey-violet
violet-gris

40+40 (Pfg.)
ultramarin
ultramarine
outremer

Großräschen

